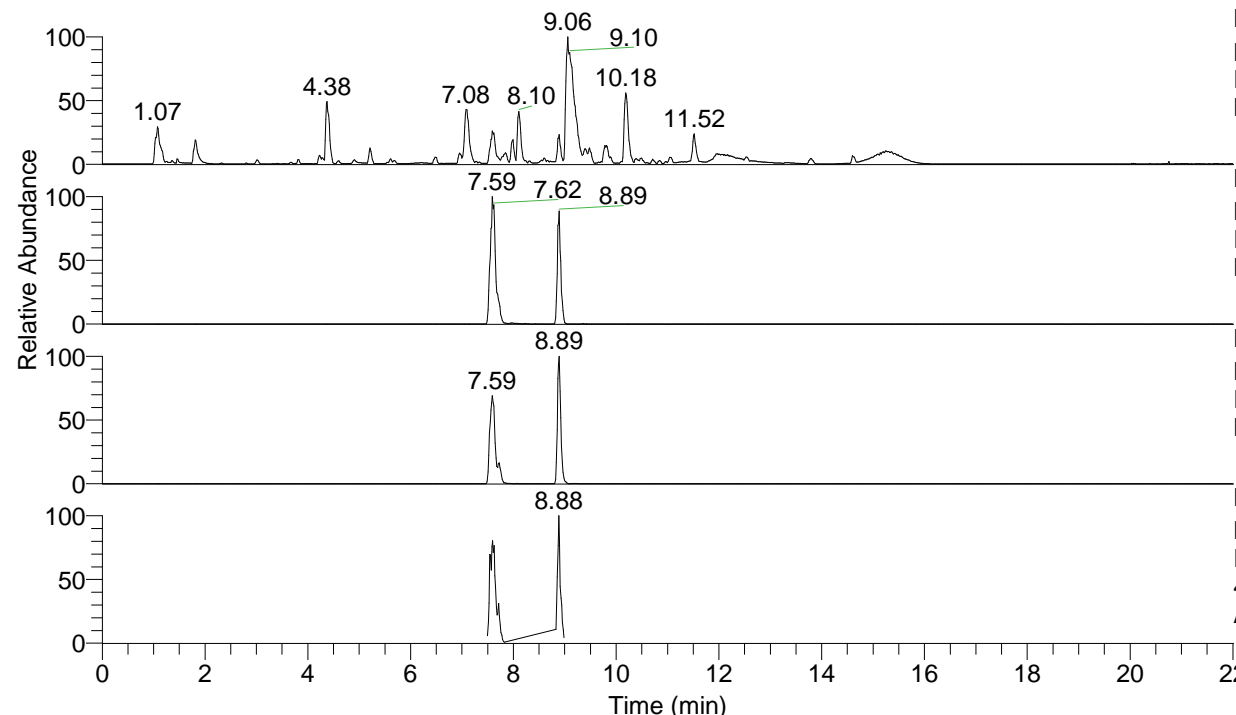


RT: 0.00 - 22.01



NL: 1.54E8
 Base Peak m/z= 100.00000-1500.00000 F:
 FTMS + p ESI Full ms [100.00-1500.00]
 MS Aperta19

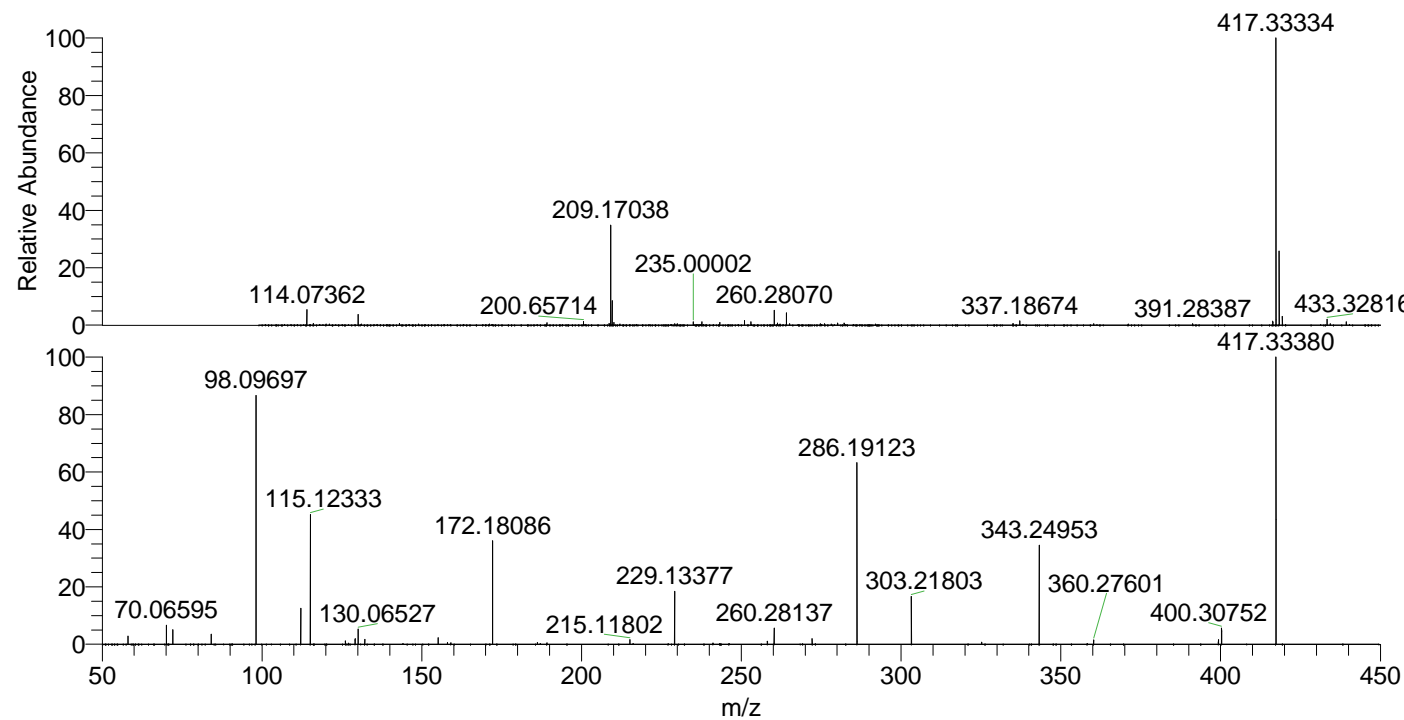
NL: 4.04E7
 Base Peak m/z= 417.33209-417.33627 F:
 FTMS + p ESI Full ms [100.00-1500.00]
 MS Aperta19

NL: 1.18E7
 Base Peak m/z= 209.16995-209.17205 F:
 FTMS + p ESI Full ms [100.00-1500.00]
 MS Aperta19

NL: 5.48E6
 Base Peak m/z= 50.00000-1500.00000 F:
 FTMS + p ESI d Full ms2
 417.33@hcd35.00 [50.00-445.00] MS
 Aperta19

Aaperta19#3568-3626 RT: 8.83-8.97 AV: 11
 F: FTMS + p ESI d Full ms2 417.33@h ...
 m/z= 50.00000-1000.00000

m/z	Intensity	Relative
58.06602	65716.4	2.82
70.06595	155754.9	6.68
72.08155	118418.0	5.08
84.08158	80432.3	3.45
98.09697	2012106.9	86.36
112.11246	295152.5	12.67
115.12333	1054741.9	45.27
126.12816	33532.6	1.44
129.13899	45081.0	1.93
130.06528	122659.7	5.26
132.14979	42021.8	1.80
155.15458	52388.0	2.25
158.06061	14130.6	0.61
159.09208	11673.2	0.50
172.18086	838842.0	36.00
186.19689	14908.7	0.64
215.11799	38568.0	1.66
229.13377	433753.9	18.62
258.16048	24633.1	1.06
260.28134	133542.5	5.73
272.17614	47018.1	2.02
286.19123	1492191.9	64.04
303.21803	390389.3	16.76
325.23977	15827.7	0.68
343.24953	814882.5	34.97
360.27607	35830.2	1.54
399.32389	37468.0	1.61
400.30750	129702.4	5.57
417.33380	2329973.5	100.00



NL: 3.38E7
 Aaperta19#3595 RT: 8.89
 AV: 1 T: FTMS + p ESI
 Full lock ms
 [100.00-1500.00]

NL: 2.50E6
 Aaperta19#3567-3625
 RT: 8.83-8.96 AV: 10 F:
 FTMS + p ESI d Full ms2
 417.33@hcd35.00
 [50.00-445.00]