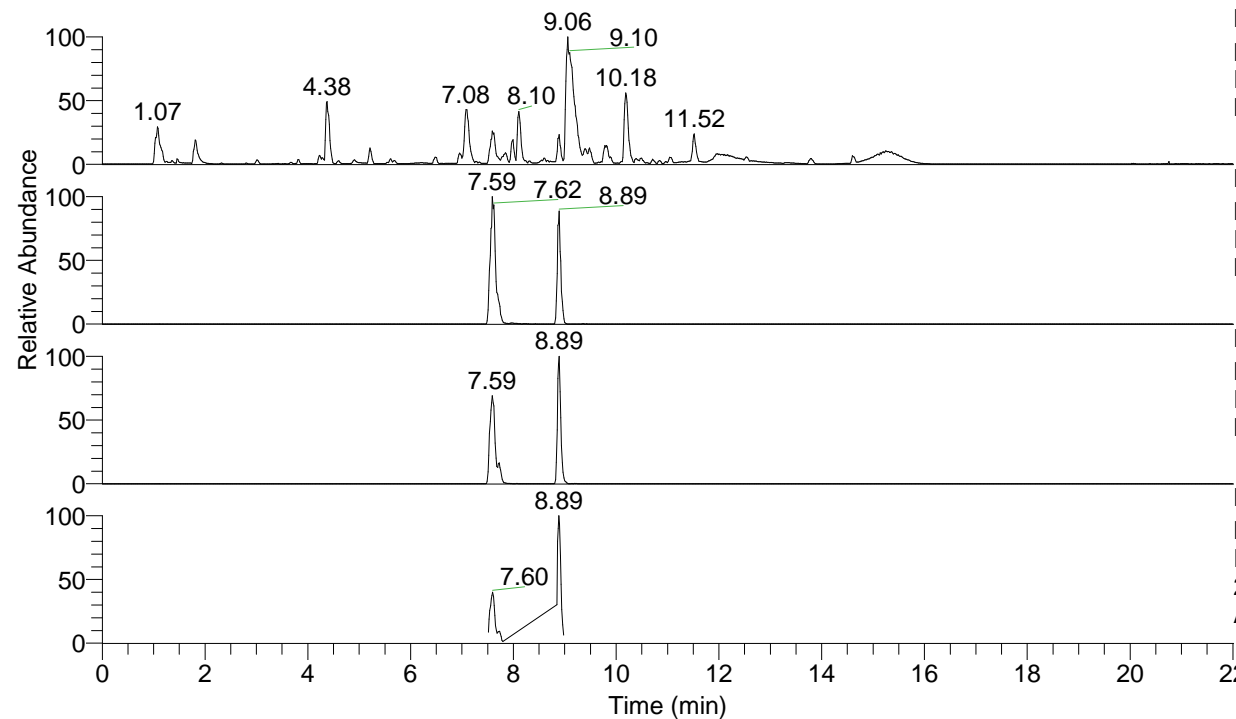


RT: 0.00 - 22.01



NL: 1.54E8
 Base Peak m/z= 100.00000-1500.00000 F:
 FTMS + p ESI Full ms [100.00-1500.00]
 MS Aperta19

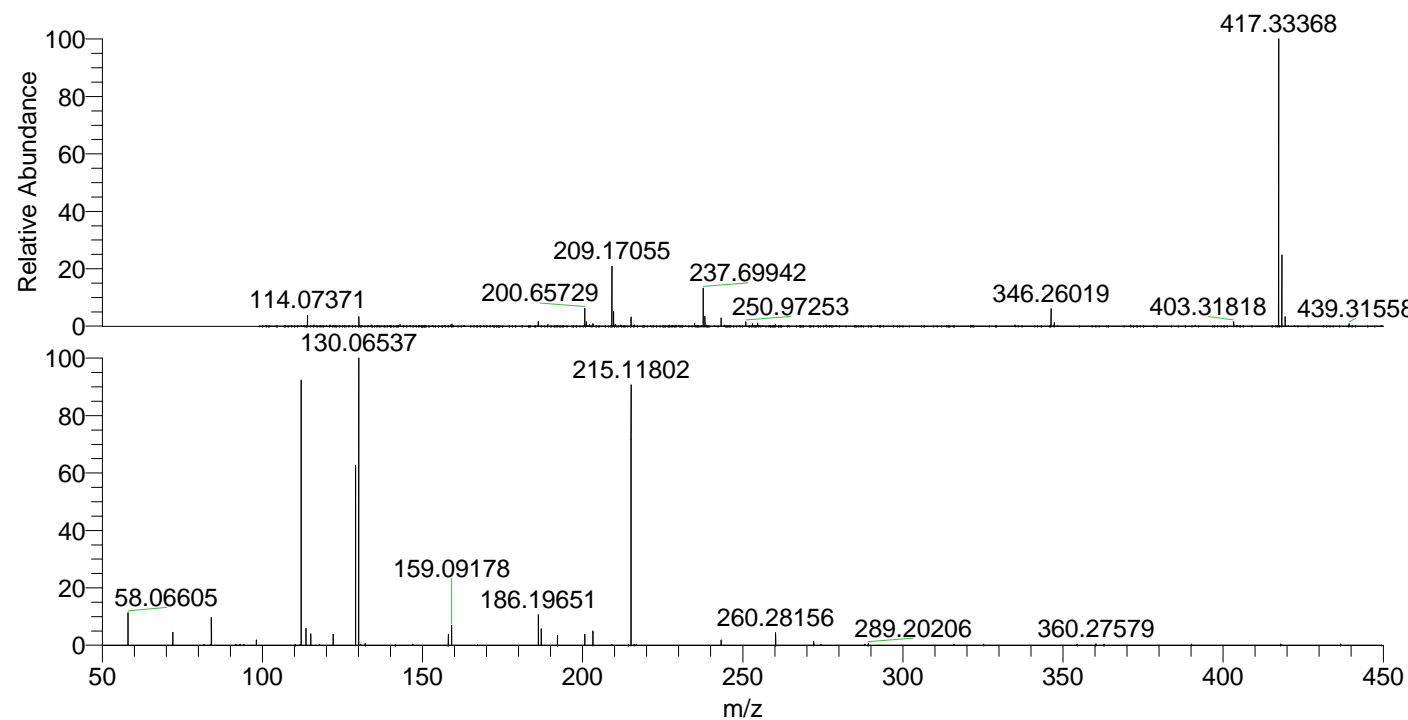
NL: 4.04E7
 Base Peak m/z= 417.33209-417.33627 F:
 FTMS + p ESI Full ms [100.00-1500.00]
 MS Aperta19

NL: 1.18E7
 Base Peak m/z= 209.16995-209.17205 F:
 FTMS + p ESI Full ms [100.00-1500.00]
 MS Aperta19

NL: 3.41E6
 Base Peak m/z= 50.00000-1500.00000 F:
 FTMS + p ESI d Full ms2
 209.17@hcd35.00 [50.00-445.00] MS
 Aperta19

Aaperta19#3033-3044 RT: 7.51-7.54 AV: 3
 F: FTMS + p ESI d Full ms2 417.33@h ...
 m/z= 50.00000-1000.00000

m/z	Intensity	Relative
58.06607	48610.7	2.40
72.08157	48890.8	2.41
84.08154	193406.4	9.55
98.09703	42049.9	2.08
112.11250	2024965.5	100.00
115.12365	21980.1	1.09
129.13890	1237050.4	61.09
130.06540	97705.0	4.83
159.09187	15448.8	0.76
186.19698	37797.3	1.87
214.13414	15487.4	0.76
215.11805	821587.4	40.57
228.14935	15121.2	0.75
272.17588	385669.6	19.05
289.20247	235511.5	11.63
325.23864	211085.3	10.42
329.23369	17173.8	0.85
343.24952	501445.1	24.76
346.25905	23078.5	1.14
399.32350	80389.5	3.97
400.30564	19368.4	0.96
417.33460	156966.5	7.75



NL: 3.88E7
 Aaperta19#3067 RT: 7.59
 AV: 1 T: FTMS + p ESI
 Full lock ms
 [100.00-1500.00]

NL: 4.46E5
 Aaperta19#3031-3043
 RT: 7.51-7.53 AV: 2 F:
 FTMS + p ESI d Full ms2
 209.17@hcd35.00
 [50.00-445.00]