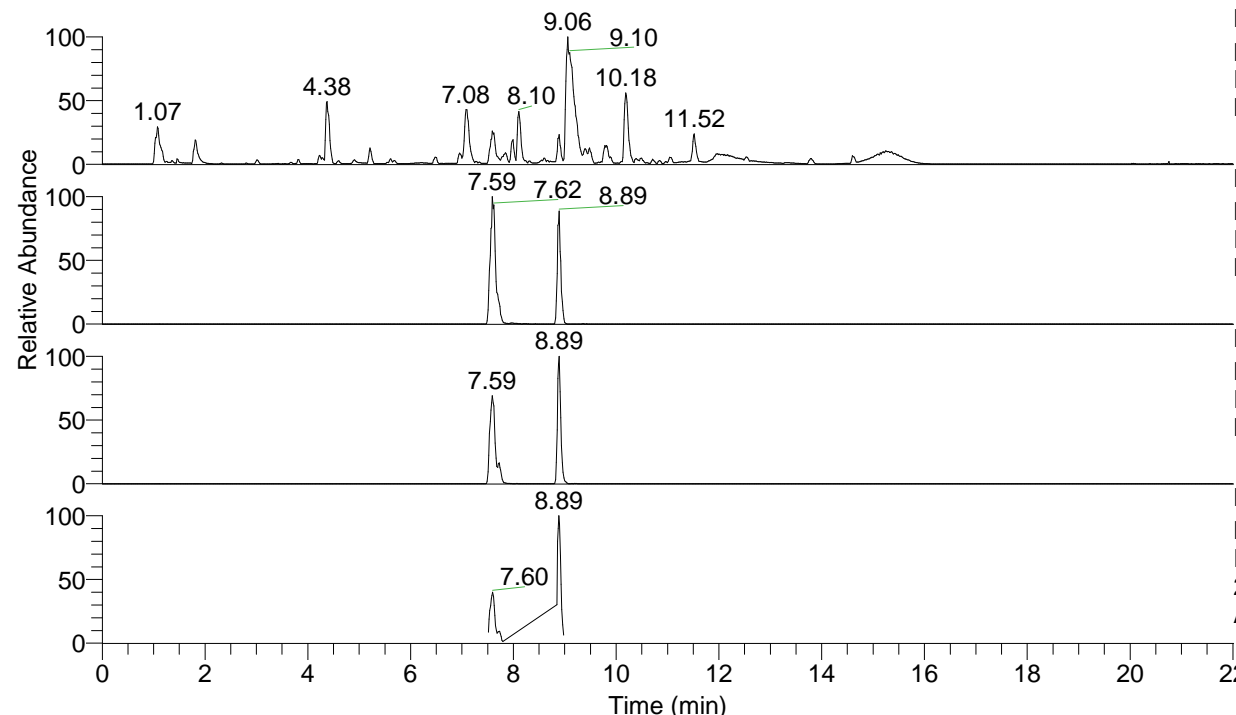


RT: 0.00 - 22.01



NL: 1.54E8
 Base Peak m/z= 100.00000-1500.00000 F:
 FTMS + p ESI Full ms [100.00-1500.00]
 MS Aperta19

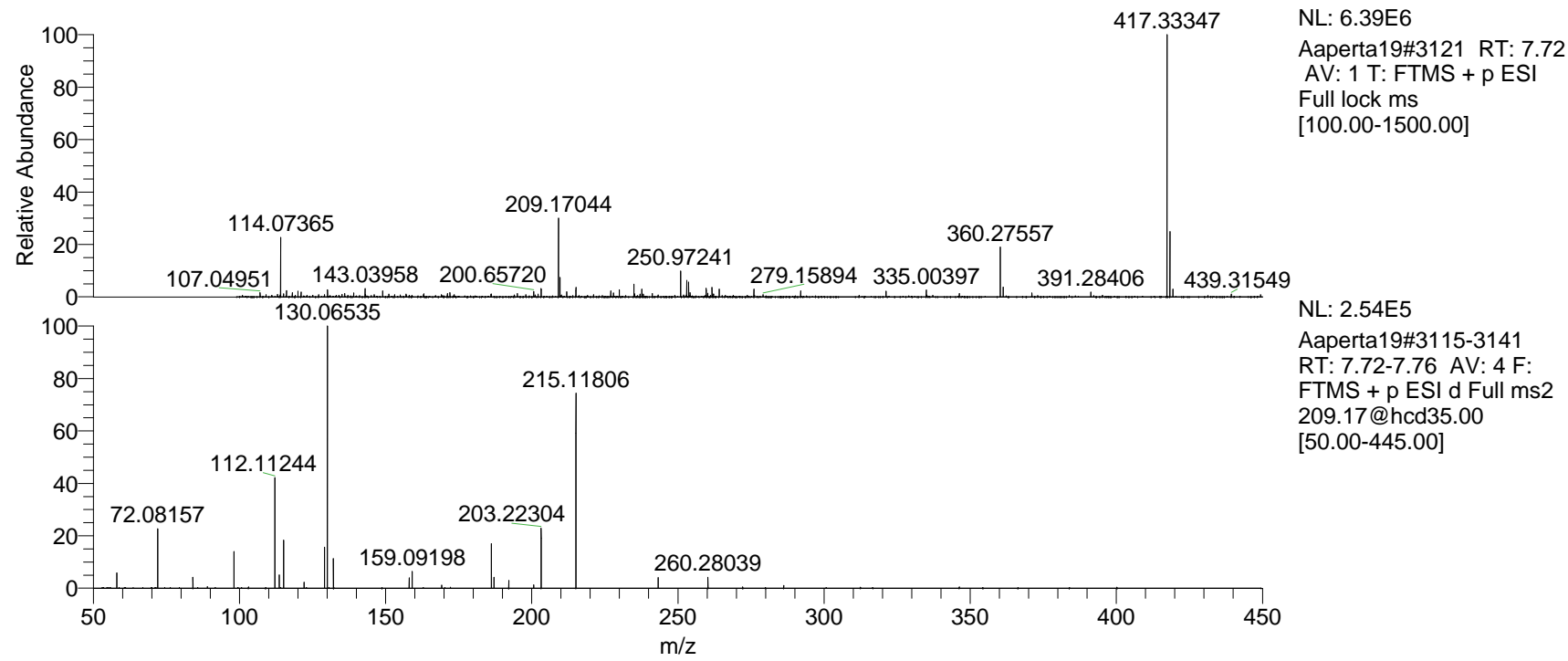
NL: 4.04E7
 Base Peak m/z= 417.33209-417.33627 F:
 FTMS + p ESI Full ms [100.00-1500.00]
 MS Aperta19

NL: 1.18E7
 Base Peak m/z= 209.16995-209.17205 F:
 FTMS + p ESI Full ms [100.00-1500.00]
 MS Aperta19

NL: 3.41E6
 Base Peak m/z= 50.00000-1500.00000 F:
 FTMS + p ESI d Full ms2
 209.17@hcd35.00 [50.00-445.00] MS
 Aperta19

Aperta19#3116-3134 RT: 7.71-7.76 AV:
 F: FTMS + p ESI d Full ms2 417.33 ...
 m/z= 50.00000-1000.00000

m/z	Intensity	Relative
58.06608	5619.3	0.57
72.08159	52147.6	5.27
84.08148	67363.9	6.80
98.09694	174424.1	17.62
112.11245	776784.4	78.47
115.12333	235849.4	23.82
129.13890	43697.8	4.41
130.06527	117207.6	11.84
132.14983	18808.7	1.90
159.09176	17931.5	1.81
169.16980	26507.1	2.68
186.19649	385367.0	38.93
187.08666	19864.3	2.01
214.13381	29578.7	2.99
215.11800	989953.5	100.00
260.28041	6056.3	0.61
272.17587	93398.8	9.43
286.19127	396712.9	40.07
289.20316	12795.6	1.29
311.22402	18509.5	1.87
328.24975	27934.5	2.82
329.23335	55078.9	5.56
346.25965	61500.2	6.21
382.29576	14770.6	1.49
399.32318	54348.7	5.49
400.30704	39247.7	3.96
417.33400	185809.8	18.77



NL: 6.39E6
 Aperta19#3121 RT: 7.72
 AV: 1 T: FTMS + p ESI
 Full lock ms
 [100.00-1500.00]

NL: 2.54E5
 Aperta19#3115-3141
 RT: 7.72-7.76 AV: 4 F:
 FTMS + p ESI d Full ms2
 209.17@hcd35.00
 [50.00-445.00]