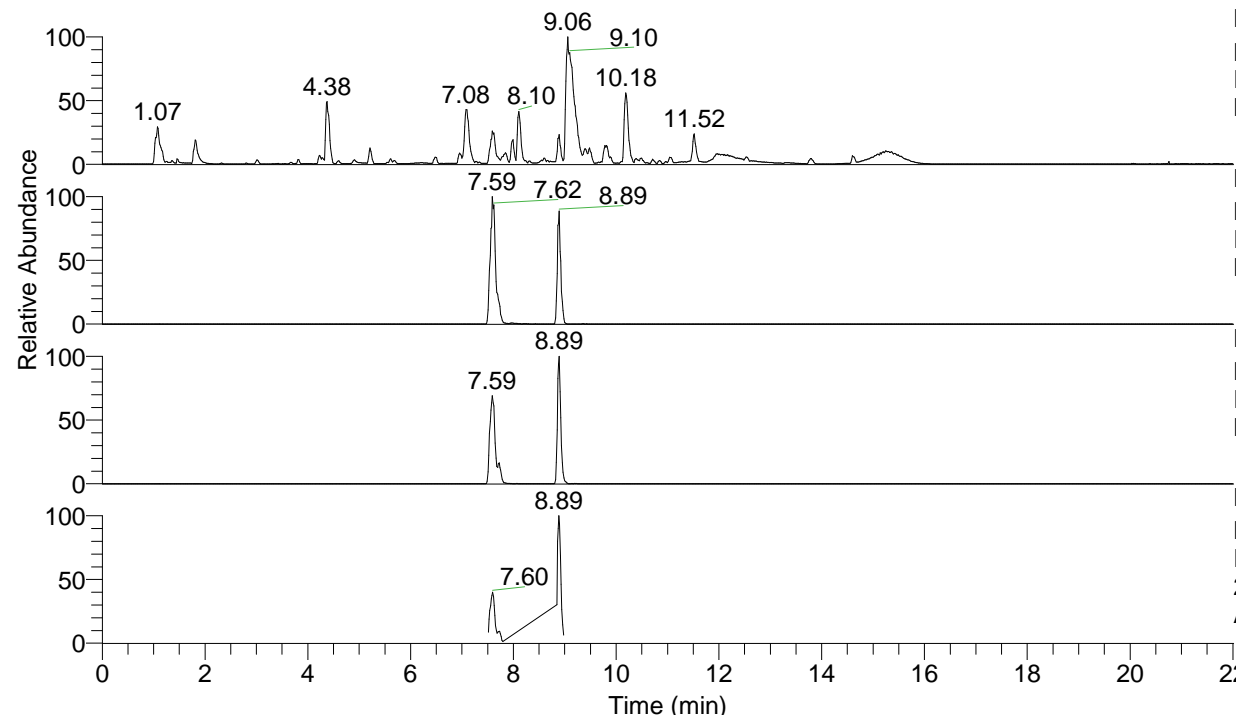


RT: 0.00 - 22.01



NL: 1.54E8
 Base Peak m/z= 100.00000-1500.00000 F:
 FTMS + p ESI Full ms [100.00-1500.00]
 MS Aperta19

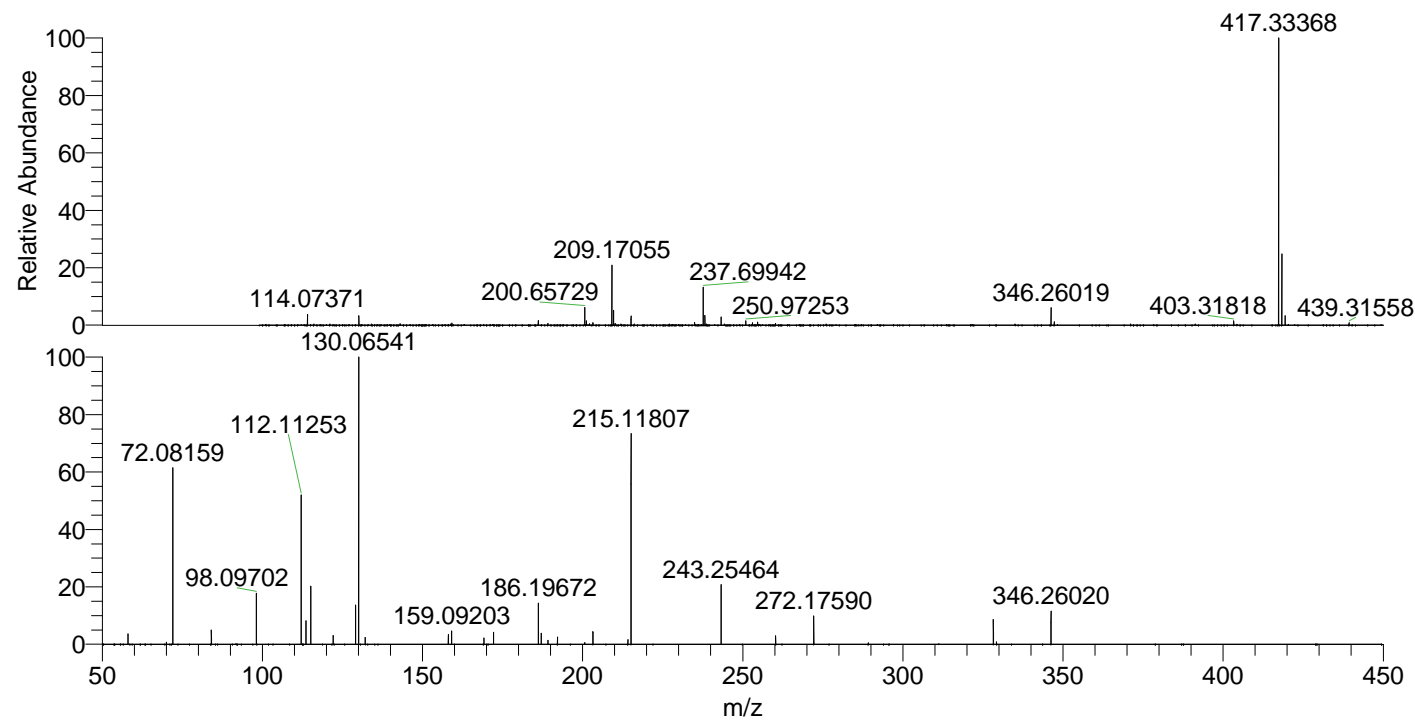
NL: 4.04E7
 Base Peak m/z= 417.33209-417.33627 F:
 FTMS + p ESI Full ms [100.00-1500.00]
 MS Aperta19

NL: 1.18E7
 Base Peak m/z= 209.16995-209.17205 F:
 FTMS + p ESI Full ms [100.00-1500.00]
 MS Aperta19

NL: 3.41E6
 Base Peak m/z= 50.00000-1500.00000 F:
 FTMS + p ESI d Full ms2
 209.17@hcd35.00 [50.00-445.00] MS
 Aperta19

Aaperta19#3056-3086 RT: 7.57-7.64 AV: 6
 F: FTMS + p ESI d Full ms2 417.33@h ...
 m/z= 50.00000-1000.00000

m/z	Intensity	Relative
58.06607	65101.4	1.88
70.06606	44355.5	1.28
72.08160	765297.4	22.12
84.08151	323218.3	9.34
98.09702	1295397.1	37.44
112.11250	3025651.0	87.44
115.12337	773055.0	22.34
129.13891	846777.3	24.47
130.06535	477457.1	13.80
132.14954	28398.5	0.82
159.09192	50011.7	1.45
169.17002	243160.2	7.03
172.18116	35401.6	1.02
186.19670	365574.9	10.57
187.08684	70202.4	2.03
189.20805	58370.9	1.69
203.22341	24776.1	0.72
214.13400	288203.5	8.33
215.11808	3460096.5	100.00
228.15042	23049.9	0.67
243.25437	32572.2	0.94
260.28148	106452.5	3.08
272.17592	1572181.0	45.44
272.20496	34903.3	1.01
289.20271	346754.8	10.02
311.22337	335993.2	9.71
325.23942	79478.2	2.30
328.24975	509968.5	14.74
329.23399	822511.4	23.77
343.24962	212497.1	6.14
346.26023	1022964.3	29.56
382.29689	211550.4	6.11
399.32314	806740.9	23.32
400.30733	698713.2	20.19
417.33406	1792287.8	51.80
417.38835	24684.1	0.71



NL: 3.88E7
 Aaperta19#3067 RT: 7.59
 AV: 1 T: FTMS + p ESI
 Full lock ms
 [100.00-1500.00]

NL: 1.07E6
 Aaperta19#3055-3090
 RT: 7.57-7.64 AV: 6 F:
 FTMS + p ESI d Full ms2
 209.17@hcd35.00
 [50.00-445.00]