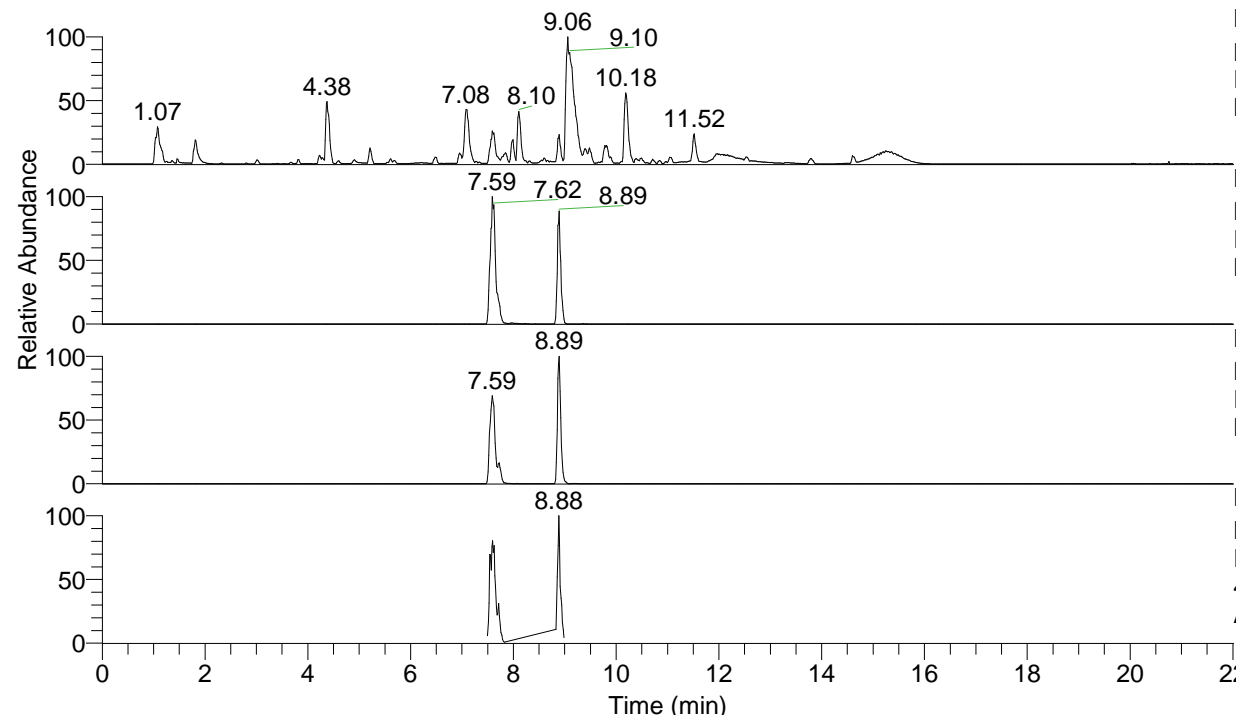


RT: 0.00 - 22.01



NL: 1.54E8
 Base Peak m/z= 100.00000-1500.00000 F:
 FTMS + p ESI Full ms [100.00-1500.00]
 MS Aperta19

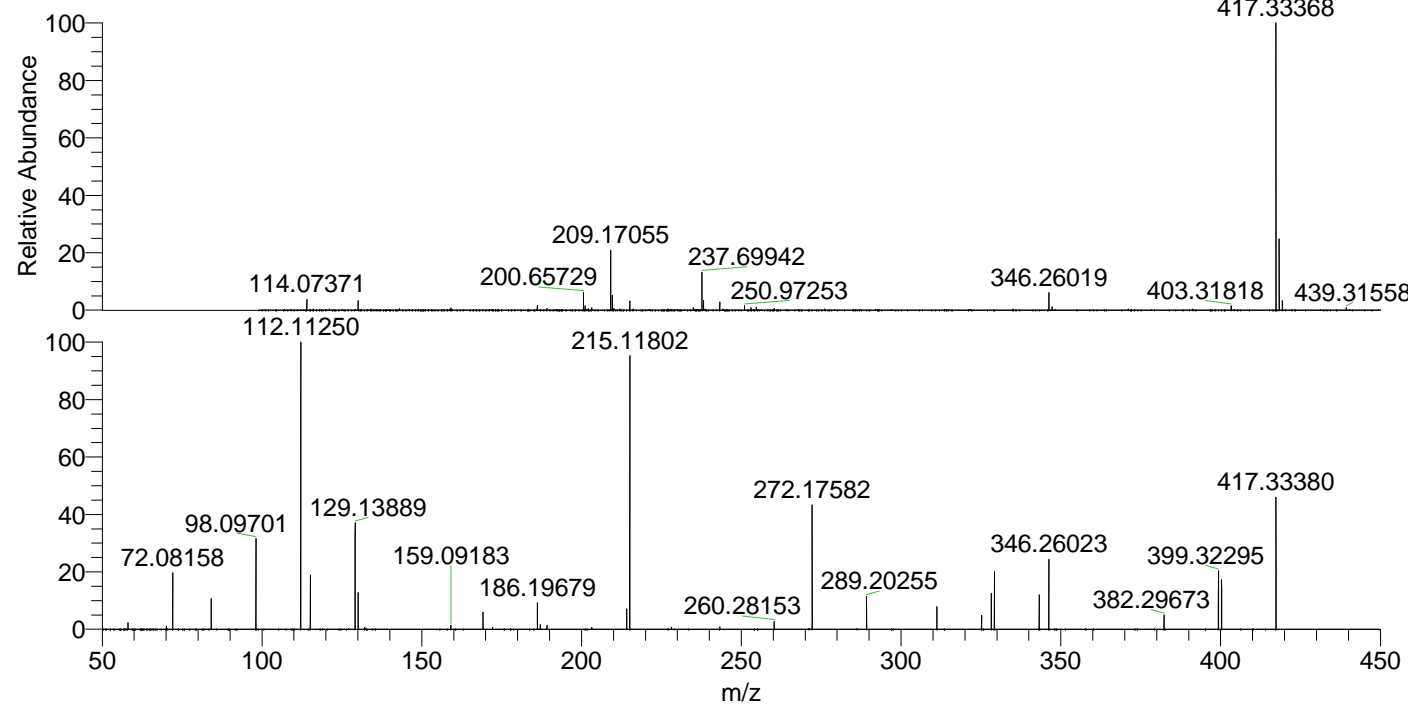
NL: 4.04E7
 Base Peak m/z= 417.33209-417.33627 F:
 FTMS + p ESI Full ms [100.00-1500.00]
 MS Aperta19

NL: 1.18E7
 Base Peak m/z= 209.16995-209.17205 F:
 FTMS + p ESI Full ms [100.00-1500.00]
 MS Aperta19

NL: 5.48E6
 Base Peak m/z= 50.00000-1500.00000 F:
 FTMS + p ESI d Full ms2
 417.33@hcd35.00 [50.00-445.00] MS
 Aperta19

Aaperta19#3033-3098 RT: 7.51-7.67 AV: 12
 F: FTMS + p ESI d Full ms2 417.33@h ...
 m/z= 50.00000-1000.00000

m/z	Intensity	Relative
58.06606	57149.2	2.27
70.06603	26989.4	1.07
72.08158	494690.9	19.65
84.08152	266168.1	10.57
98.09701	789175.9	31.35
112.11250	2517067.0	100.00
115.12336	473984.8	18.83
129.13889	924303.1	36.72
130.06531	320123.8	12.72
132.14956	17786.8	0.71
159.09183	35187.7	1.40
169.17010	152386.2	6.05
172.18118	19048.9	0.76
186.19679	237546.9	9.44
187.08683	40443.3	1.61
189.20795	33863.7	1.35
203.22347	15386.6	0.61
214.13388	175968.5	6.99
215.11802	2376339.0	94.41
228.15018	18410.3	0.73
243.25446	20575.1	0.82
260.28153	69246.3	2.75
272.17582	1078102.8	42.83
272.20388	19591.7	0.78
289.20255	285275.6	11.33
311.22315	196784.7	7.82
325.23891	124553.6	4.95
328.24971	315511.5	12.53
329.23390	502359.2	19.96
343.24970	303379.6	12.05
346.26023	627293.8	24.92
382.29673	128547.1	5.11
399.32295	510943.7	20.30
400.30710	427525.5	16.99
417.33380	1144842.8	45.48



NL: 3.88E7
 Aaperta19#3067 RT: 7.59
 AV: 1 T: FTMS + p ESI
 Full lock ms
 [100.00-1500.00]

NL: 2.49E6
 Aaperta19#3031-3102
 RT: 7.51-7.67 AV: 12 F:
 FTMS + p ESI d Full ms2
 417.33@hcd35.00
 [50.00-445.00]