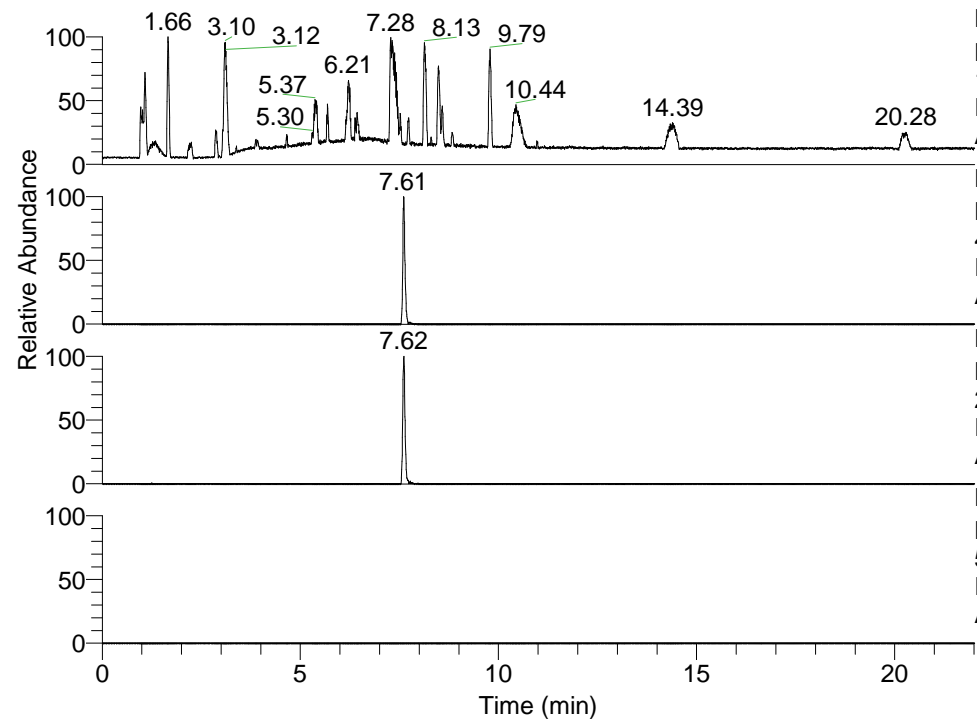


RT: 0.00 - 22.01



NL: 1.41E8
 Base Peak m/z=
 100.00000-1500.00000 F: FTMS + p
 ESI Full ms [100.00-1500.00] MS
 Aperta_HDX

NL: 2.01E6
 Base Peak m/z=
 420.36194-420.36614 F: FTMS + p
 ESI Full ms [100.00-1500.00] MS
 Aperta_HDX

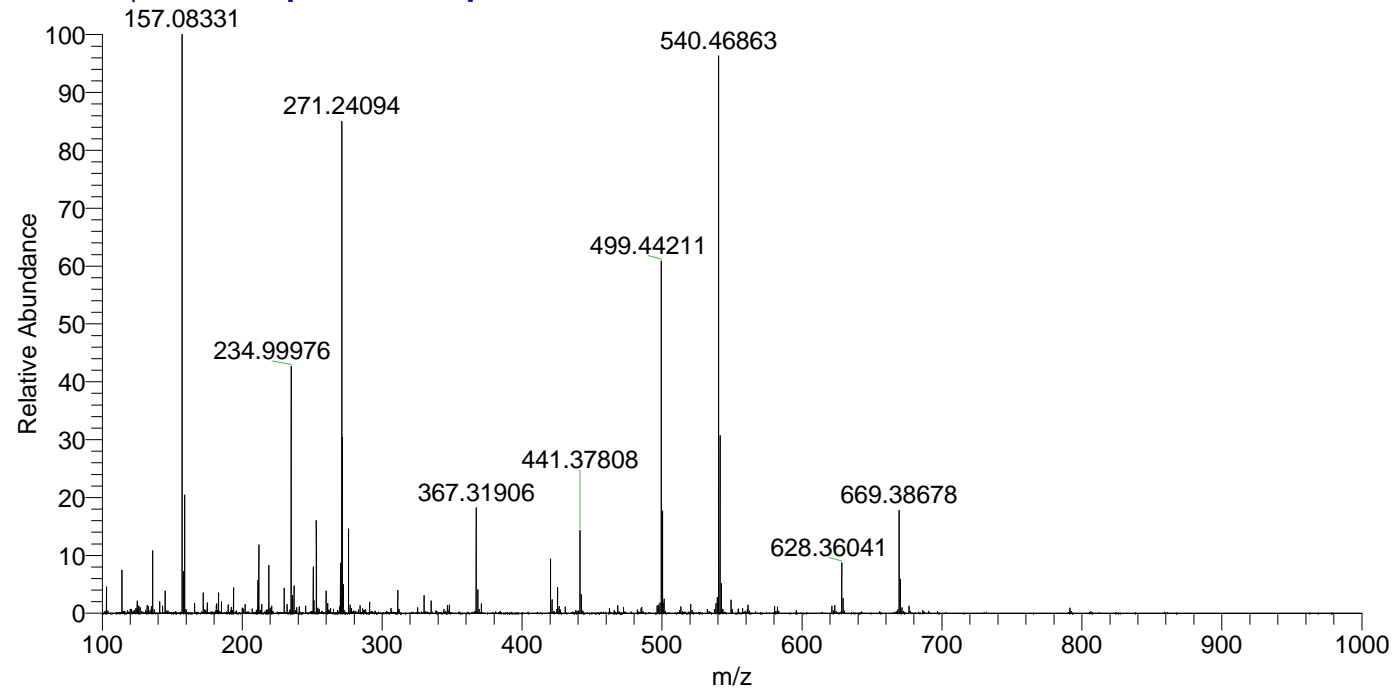
NL: 1.22E6
 Base Peak m/z=
 211.18801-211.19013 F: FTMS + p
 ESI Full ms [100.00-1500.00] MS
 Aperta_HDX

NL: 0
 Base Peak m/z=
 535.36050-535.36586 F: FTMS + p
 ESI Full ms [100.00-1500.00] MS
 Aperta_HDX

Aperta_HDX#1264 RT: 7.61
 T: FTMS + p ESI Full ms [100.00-1500.00]
 m/z= 420.00000-421.00000

m/z	Intensity	Relative	Delta (ppm)	Composition
420.36276	2011307.0	100.00	-1.74	C ₂₄ H ₃₈ ² H ₄ ON ₅
			1.94	C ₂₄ H ₃₆ ² H ₅ ON ₅
			-5.42	C ₂₄ H ₄₀ ² H ₃ ON ₅
			5.63	C ₂₄ H ₃₄ ² H ₆ ON ₅
			-9.11	C ₂₄ H ₄₂ ² H ₂ ON ₅
			9.31	C ₂₄ H ₃₂ ² H ₇ ON ₅

Aperta_HDX #1264 RT: 7.61 AV: 1 NL: 2.10E7
 T: FTMS + p ESI Full ms [100.00-1500.00]



Aperta_HDX #1264 RT: 7.61 AV: 1 NL: 1.97E6
 T: FTMS + p ESI Full ms [100.00-1500.00]

