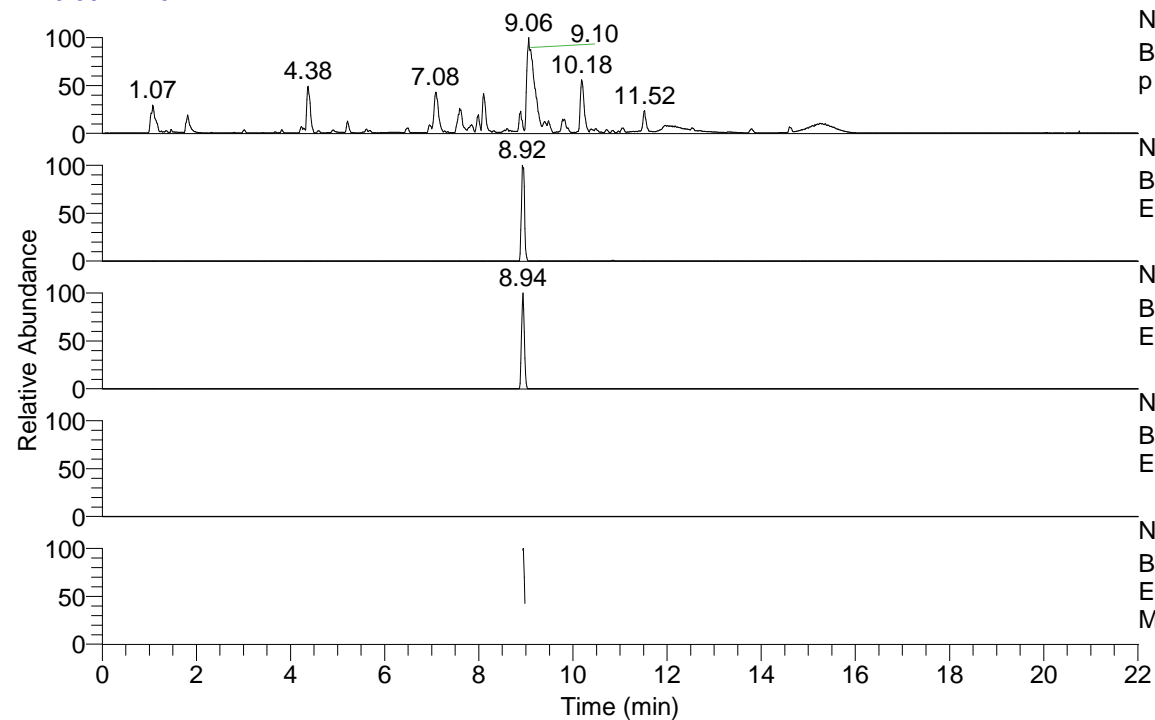


RT: 0.00 - 22.01



NL: 1.54E8

Base Peak m/z= 100.00000-1500.00000 F: FTMS + p ESI Full ms [100.00-1500.00] MS Aperta19

NL: 1.60E6

Base Peak m/z= 416.33686-416.34102 F: FTMS + p ESI Full ms [100.00-1500.00] MS Aperta19

NL: 7.84E5

Base Peak m/z= 208.67234-208.67442 F: FTMS + p ESI Full ms [100.00-1500.00] MS Aperta19

NL: 0

Base Peak m/z= 530.32915-530.33445 F: FTMS + p ESI Full ms [100.00-1500.00] MS Aperta19

NL: 5.95E5

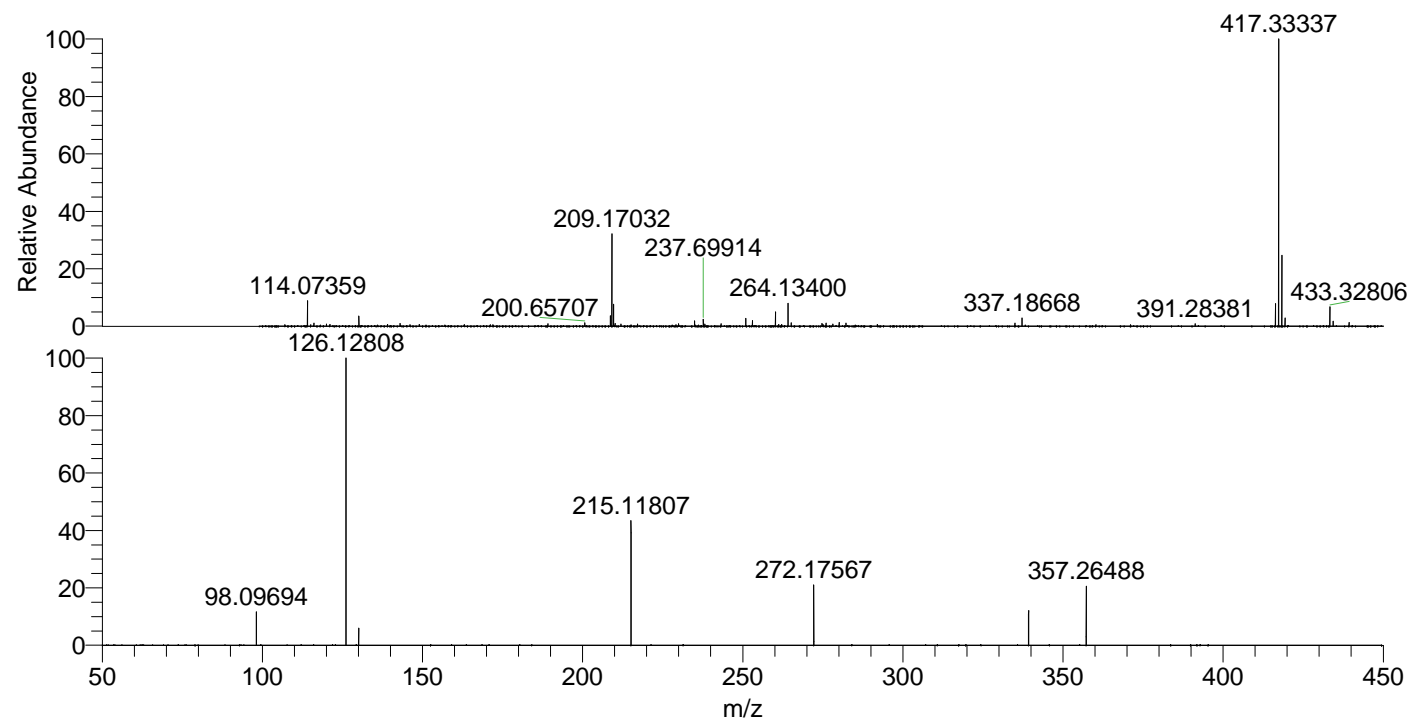
Base Peak m/z= 50.00000-1500.00000 F: FTMS + p ESI d Full ms2 416.34@hcd35.00 [50.00-445.00] MS Aperta19

Aaperta19#3611-3629 RT: 8.93-8.98 AV:

F: FTMS + p ESI d Full ms2 416.34 ...

m/z= 50.00000-1000.00000

m/z	Intensity	Relative
98.09694	50220.7	11.64
126.12808	431398.0	100.00
130.06558	25773.9	5.97
215.11807	188007.8	43.58
272.17567	90187.8	20.91
339.25505	52407.2	12.15
357.26488	88231.5	20.45



NL: 1.91E7

Aaperta19#3607 RT: 8.92  
AV: 1 T: FTMS + p ESI  
Full lock ms  
[100.00-1500.00]

NL: 4.29E5

Aaperta19#3536-3703  
RT: 8.93-8.98 AV: 4 F:  
FTMS + p ESI d Full ms2  
416.34@hcd35.00  
[50.00-445.00]