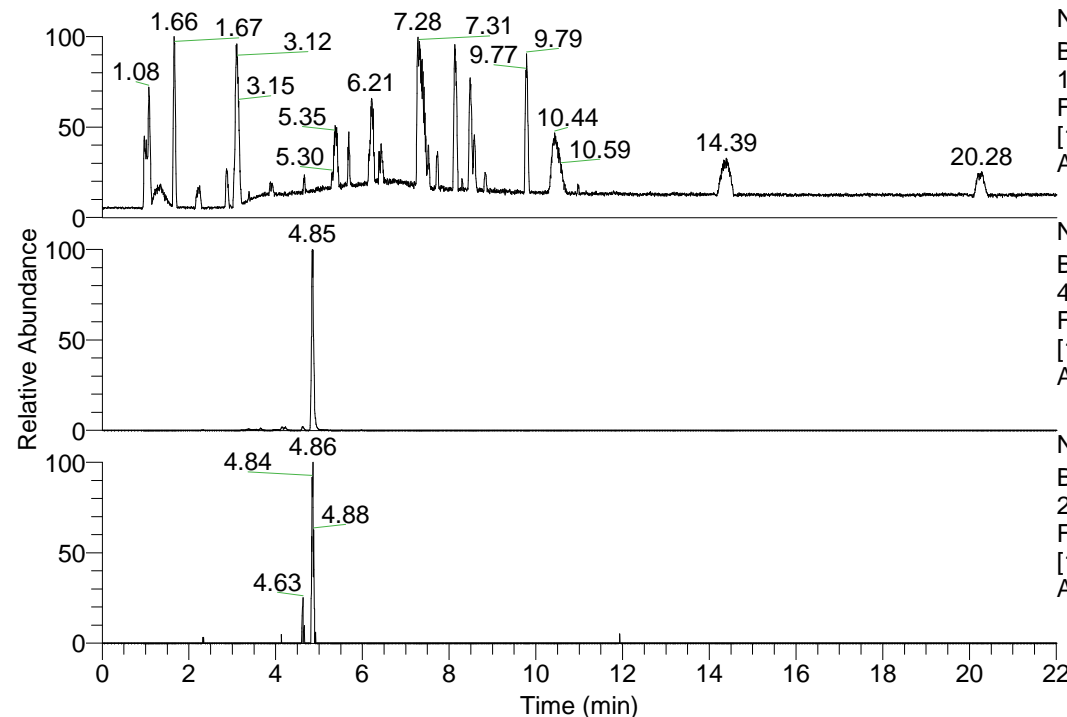


RT: 0.00 - 22.01



NL: 1.41E8
 Base Peak m/z=
 100.00000-1500.00000 F:
 FTMS + p ESI Full ms
 [100.00-1500.00] MS
 Aperta_HDX

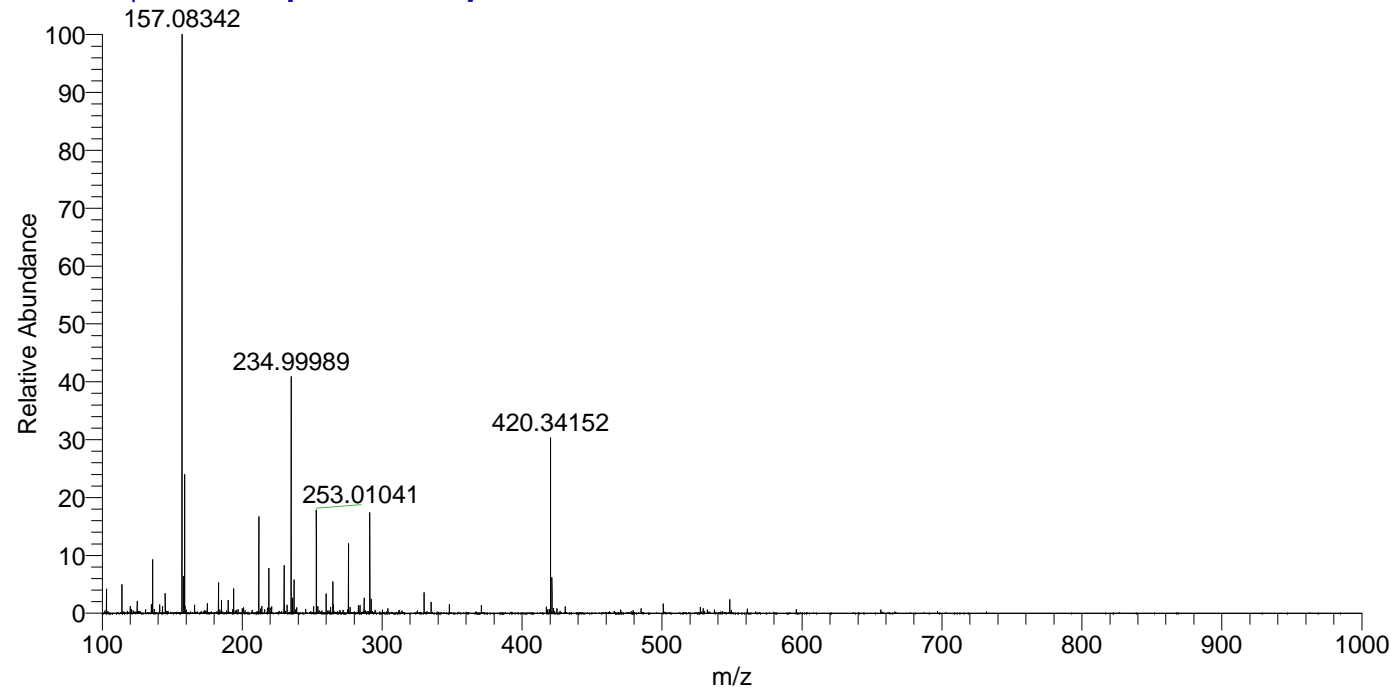
NL: 7.03E6
 Base Peak m/z=
 420.34050-420.34470 F:
 FTMS + p ESI Full ms
 [100.00-1500.00] MS
 Aperta_HDX

NL: 7.66E4
 Base Peak m/z=
 211.17729-211.17941 F:
 FTMS + p ESI Full ms
 [100.00-1500.00] MS
 Aperta_HDX

Aperta_HDX#790 RT: 4.85
 T: FTMS + p ESI Full ms [100.00-1500.00]
 m/z= 420.00000-421.00000

m/z	Intensity	Relative	Delta (ppm)	Composition
420.34152	5960825.5	100.00	-1.24	C ₂₀ H ₃₀ ² H ₈ O ₄ N ₅
			2.44	C ₂₀ H ₂₈ ² H ₉ O ₄ N ₅
			-4.93	C ₂₀ H ₃₂ ² H ₇ O ₄ N ₅
			6.12	C ₂₀ H ₂₆ ² H ₁₀ O ₄ N ₅
			-8.61	C ₂₀ H ₃₄ ² H ₆ O ₄ N ₅

Aperta_HDX #790 RT: 4.85 AV: 1 NL: 1.93E7
 T: FTMS + p ESI Full ms [100.00-1500.00]



Aperta_HDX #790 RT: 4.85 AV: 1 NL: 5.86E6
 T: FTMS + p ESI Full ms [100.00-1500.00]

