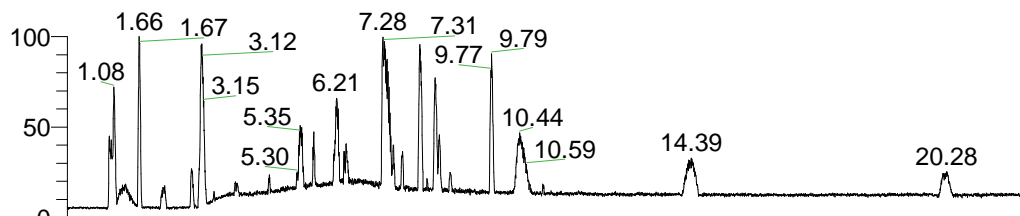


RT: 0.00 - 22.01



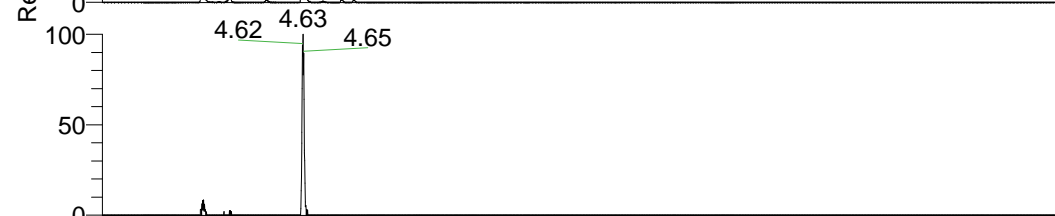
NL: 1.41E8
 Base Peak m/z=
 100.00000-1500.00000 F:
 FTMS + p ESI Full ms
 [100.00-1500.00] MS
 Aperta_HDX

Aperta_HDX#753 RT: 4.63
 T: FTMS + p ESI Full ms [100.00-1500.00]
 m/z= 421.00000-422.00000

m/z	Intensity	Relative	Delta (ppm)	Composition
421.34769	5721260.0	100.00	-1.51	C ₂₀ H ₂₉ ² H ₉ O ₄ N ₅
			2.17	C ₂₀ H ₂₇ ² H ₁₀ O ₄ N ₅
			-5.18	C ₂₀ H ₃₁ ² H ₈ O ₄ N ₅
			-8.86	C ₂₀ H ₃₃ ² H ₇ O ₄ N ₅



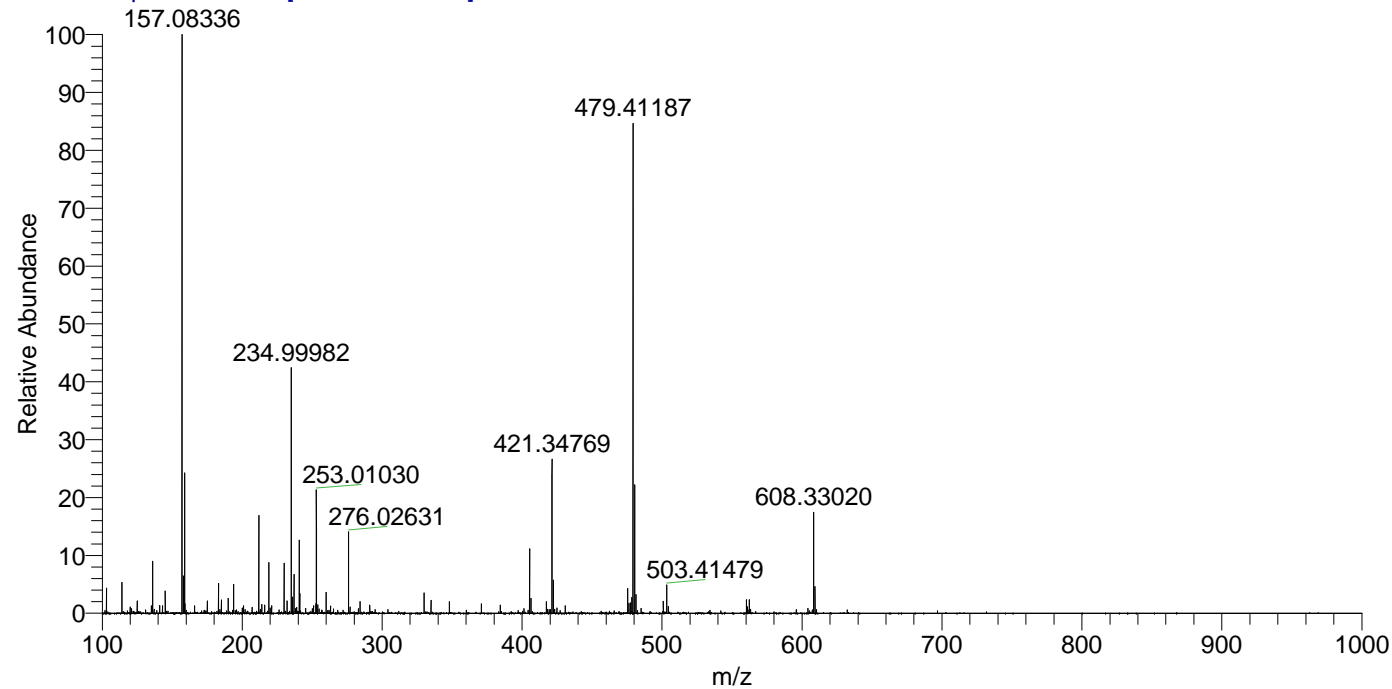
NL: 5.72E6
 Base Peak m/z=
 421.34676-421.35098 F:
 FTMS + p ESI Full ms
 [100.00-1500.00] MS
 Aperta_HDX



NL: 1.34E5
 Base Peak m/z=
 211.68043-211.68255 F:
 FTMS + p ESI Full ms
 [100.00-1500.00] MS
 Aperta_HDX

Aperta_HDX #753 RT: 4.63 AV: 1 NL: 2.10E7

T: FTMS + p ESI Full ms [100.00-1500.00]



Aperta_HDX #753 RT: 4.63 AV: 1 NL: 5.60E6

T: FTMS + p ESI Full ms [100.00-1500.00]

