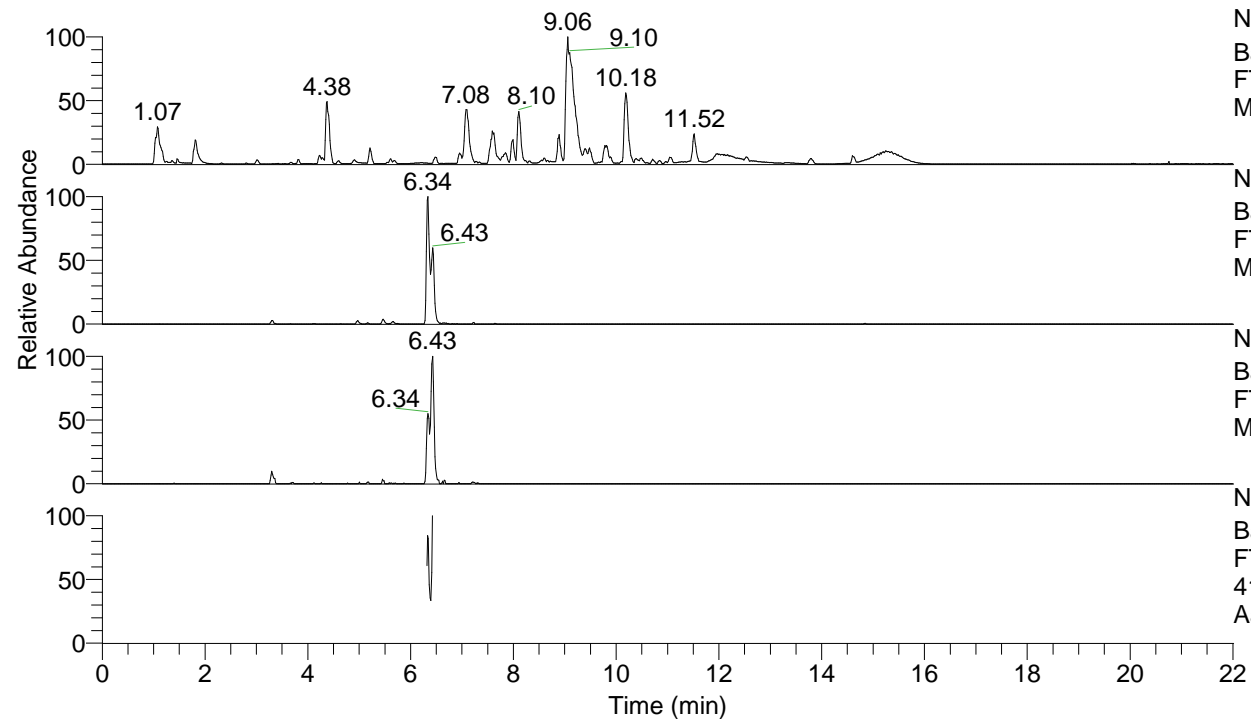


RT: 0.00 - 22.01



NL: 1.54E8  
 Base Peak m/z= 100.00000-1500.00000 F:  
 FTMS + p ESI Full ms [100.00-1500.00]  
 MS Aperta19

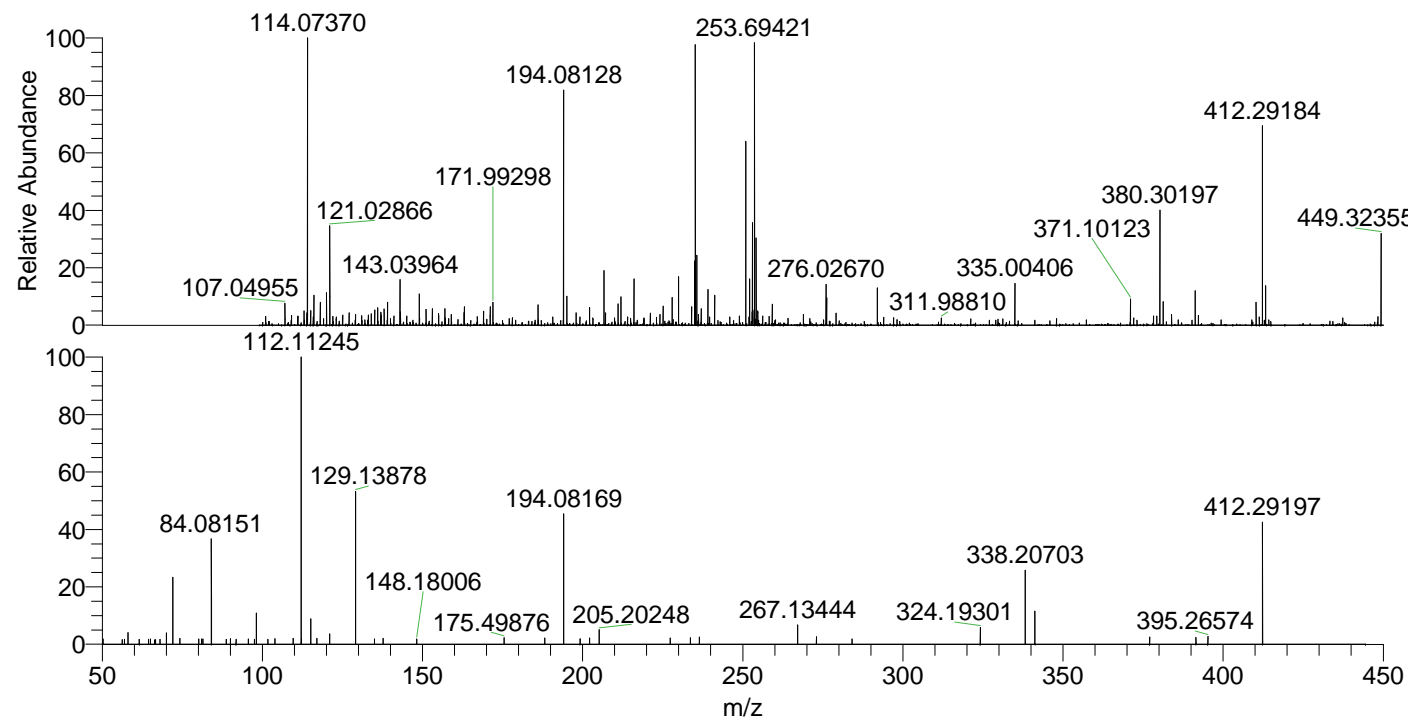
NL: 1.33E6  
 Base Peak m/z= 412.29032-412.29444 F:  
 FTMS + p ESI Full ms [100.00-1500.00]  
 MS Aperta19

NL: 2.19E5  
 Base Peak m/z= 206.64907-206.65113 F:  
 FTMS + p ESI Full ms [100.00-1500.00]  
 MS Aperta19

NL: 1.12E5  
 Base Peak m/z= 50.00000-1500.00000 F:  
 FTMS + p ESI d Full ms2  
 412.29@hcd35.00 [50.00-440.00] MS  
 Aperta19

Aperta19#2580-2591 RT: 6.40-6.42 AV:  
 F: FTMS + p ESI d Full ms2 412.29 ...  
 m/z= 50.00000-1000.00000

m/z	Intensity	Relative
50.22720	1153.0	1.78
56.26598	1027.4	1.58
56.96892	1114.4	1.72
58.06599	2604.5	4.01
61.59168	1128.6	1.74
64.42355	1066.7	1.64
65.07176	1181.2	1.82
66.35553	969.9	1.49
66.59567	1012.1	1.56
68.04535	1115.1	1.72
70.06585	2559.3	3.94
72.08163	15412.1	23.75
74.23405	1310.3	2.02
80.10543	1164.5	1.79
81.01548	1153.2	1.78
81.47286	1179.3	1.82
84.08151	23241.9	35.82
88.76330	1112.3	1.71
90.00931	1217.1	1.88
91.78223	1139.7	1.76
95.64221	1177.3	1.81
97.53585	1078.9	1.66
98.09704	6974.5	10.75
101.70286	1104.3	1.70
103.88575	1209.8	1.86
109.62999	1336.4	2.06
112.11245	64883.6	100.00
112.23224	1264.3	1.95
115.12365	5686.7	8.76
117.04174	1302.6	2.01
121.02899	2289.2	3.53
129.13878	33723.9	51.98
134.99787	1205.5	1.86
137.68761	1304.7	2.01
148.18006	1194.4	1.84
175.49876	1428.0	2.20
188.17713	1426.8	2.20
194.08169	29505.4	45.47
199.22416	1215.5	1.87
202.19183	1426.9	2.20
205.20248	3260.8	5.03
227.37809	1374.9	2.12
233.63698	1478.3	2.28
236.47861	1605.9	2.48
267.13444	4300.3	6.63
273.01590	1629.3	2.51
284.15263	1198.8	1.85
324.19301	3728.0	5.75
338.20703	16700.8	25.74
341.21849	7465.4	11.51
377.06011	1656.6	2.55
391.51205	1505.1	2.32
395.26574	1781.8	2.75
412.29197	26937.4	41.52



NL: 1.15E6  
 Aperta19#2593 RT: 6.43  
 AV: 1 T: FTMS + p ESI  
 Full lock ms  
 [100.00-1500.00]

NL: 6.33E4  
 Aperta19#2580-2598  
 RT: 6.40-6.42 AV: 3 F:  
 FTMS + p ESI d Full ms2  
 412.29@hcd35.00  
 [50.00-440.00]