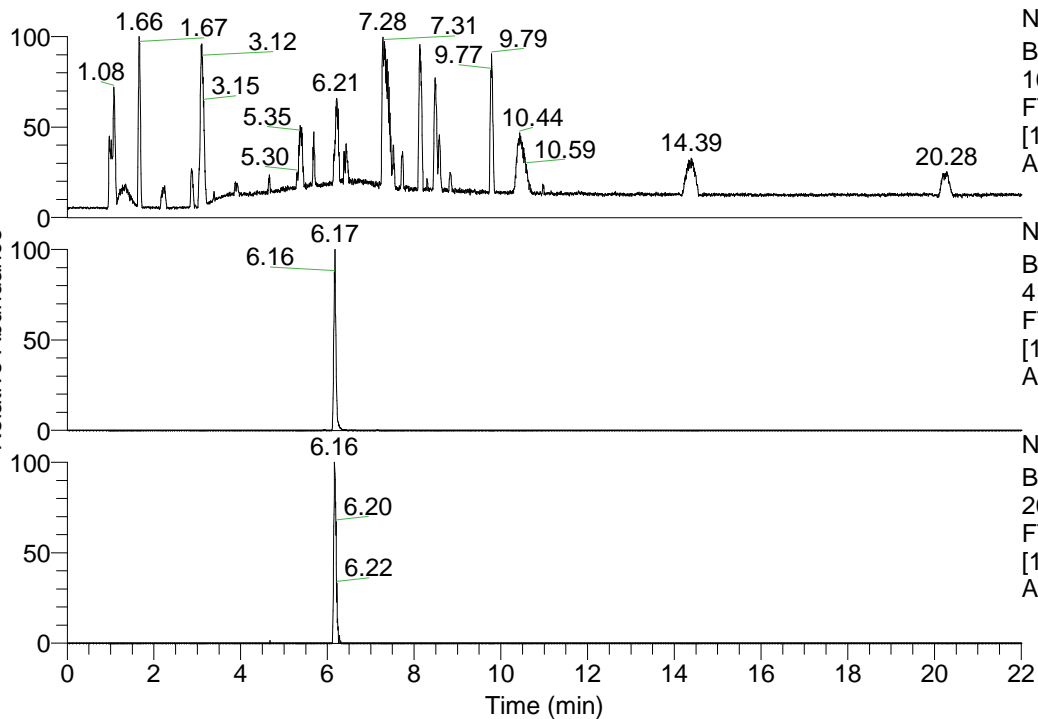


RT: 0.00 - 22.01



NL: 1.41E8  
 Base Peak m/z=  
 100.00000-1500.00000 F:  
 FTMS + p ESI Full ms  
 [100.00-1500.00] MS  
 Aperta\_HDX

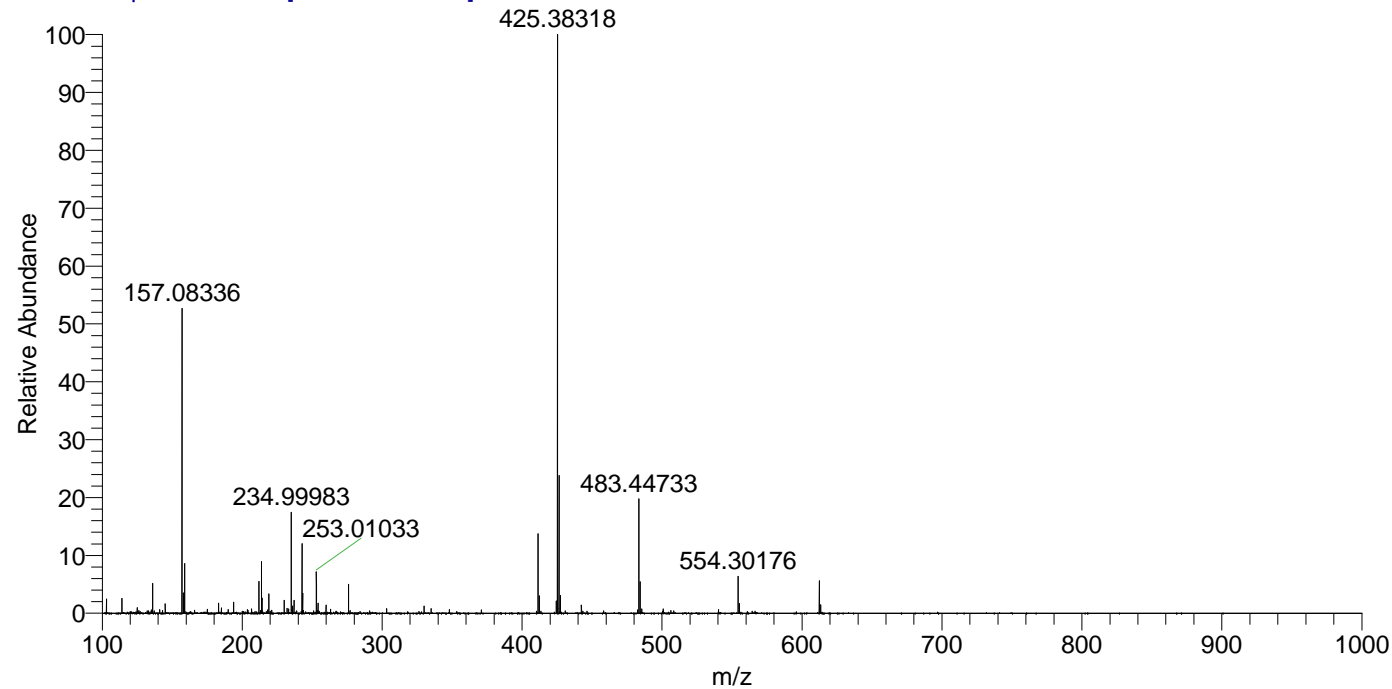
NL: 8.09E6  
 Base Peak m/z=  
 411.36669-411.37081 F:  
 FTMS + p ESI Full ms  
 [100.00-1500.00] MS  
 Aperta\_HDX

NL: 3.77E5  
 Base Peak m/z=  
 206.69040-206.69246 F:  
 FTMS + p ESI Full ms  
 [100.00-1500.00] MS  
 Aperta\_HDX

Aaperta\_HDX#1013 RT: 6.17  
 T: FTMS + p ESI Full ms [100.00-1500.00]  
 m/z = 411.00000-412.00000

m/z	Intensity	Relative	Delta (ppm)	Composition
411.36777	6611071.5	100.00	-1.05	C <sub>22</sub> H <sub>31</sub> <sup>2</sup> H <sub>8</sub> ON <sub>6</sub>
			2.71	C <sub>22</sub> H <sub>29</sub> <sup>2</sup> H <sub>9</sub> ON <sub>6</sub>
			-4.82	C <sub>22</sub> H <sub>33</sub> <sup>2</sup> H <sub>7</sub> ON <sub>6</sub>
			6.47	C <sub>22</sub> H <sub>27</sub> <sup>2</sup> H <sub>10</sub> ON <sub>6</sub>
			-8.58	C <sub>22</sub> H <sub>35</sub> <sup>2</sup> H <sub>6</sub> ON <sub>6</sub>

Aaperta\_HDX #1013 RT: 6.17 AV: 1 NL: 4.79E7  
 T: FTMS + p ESI Full ms [100.00-1500.00]



Aaperta\_HDX #1013 RT: 6.17 AV: 1 NL: 6.58E6  
 T: FTMS + p ESI Full ms [100.00-1500.00]

