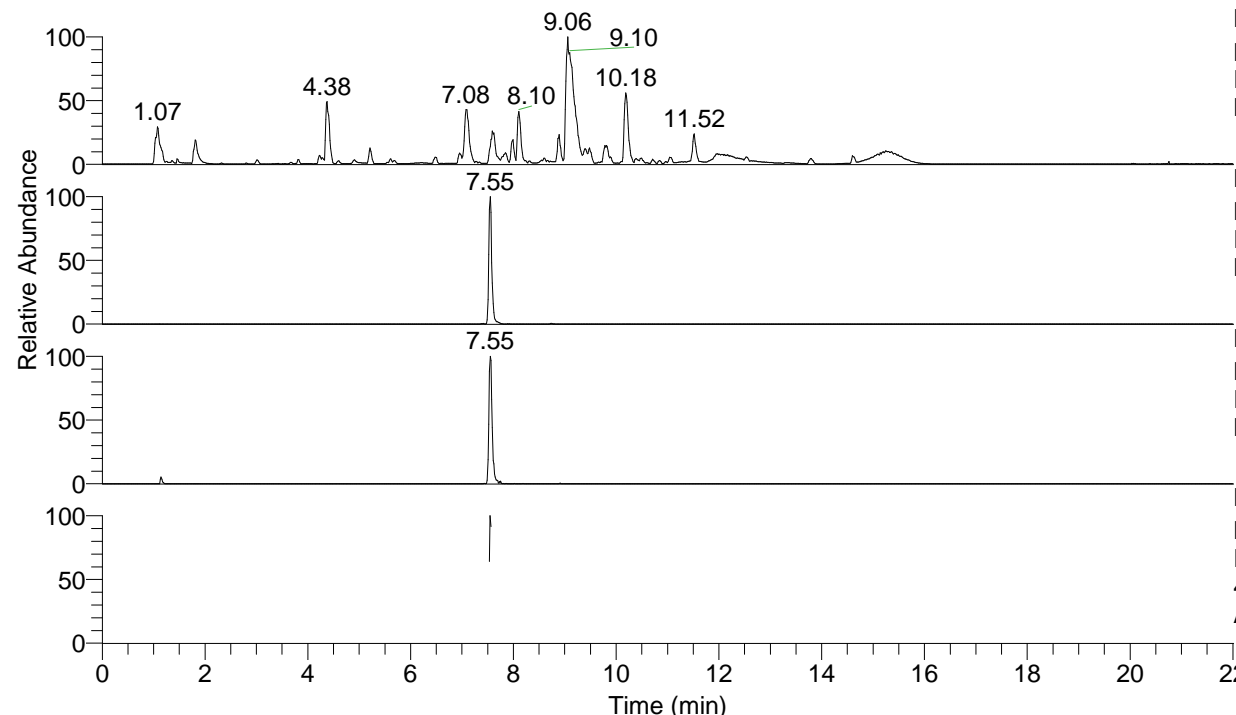


RT: 0.00 - 22.01



NL: 1.54E8
 Base Peak m/z= 100.00000-1500.00000 F:
 FTMS + p ESI Full ms [100.00-1500.00]
 MS Aperta19

NL: 1.76E6
 Base Peak m/z= 403.31651-403.32055 F:
 FTMS + p ESI Full ms [100.00-1500.00]
 MS Aperta19

NL: 4.06E5
 Base Peak m/z= 202.16217-202.16419 F:
 FTMS + p ESI Full ms [100.00-1500.00]
 MS Aperta19

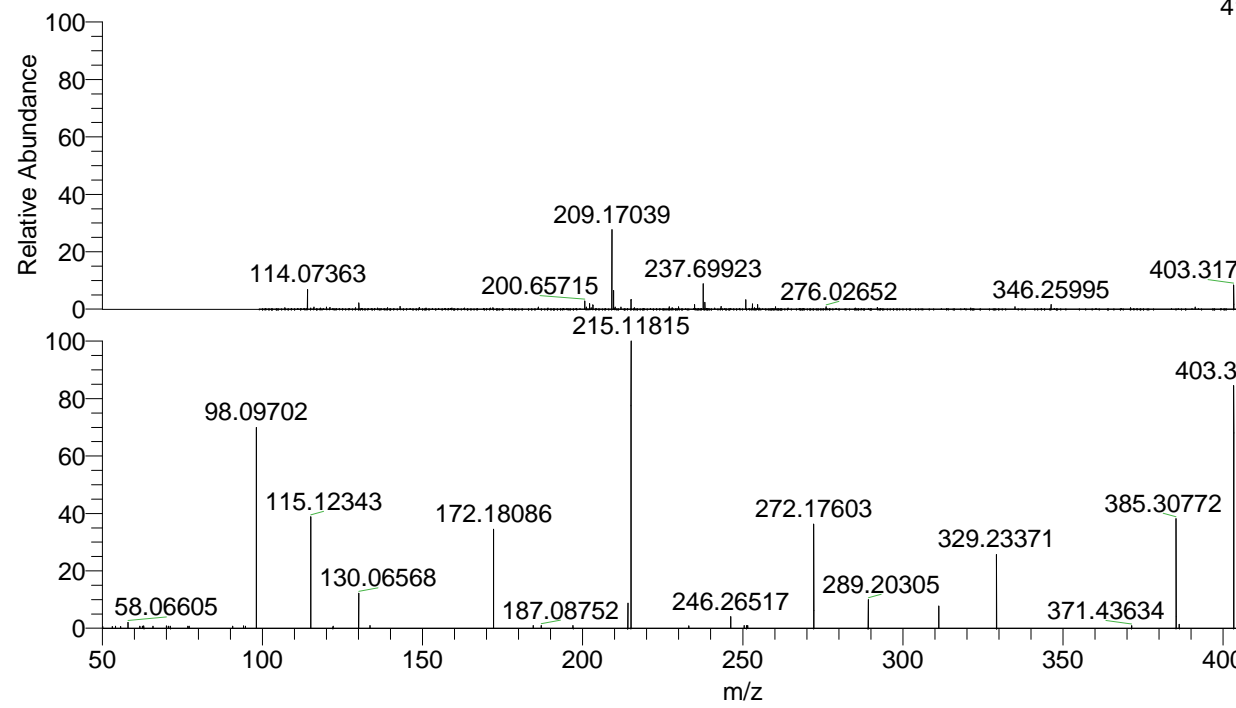
NL: 1.88E5
 Base Peak m/z= 50.00000-1500.00000 F:
 FTMS + p ESI d Full ms2
 403.32@hcd35.00 [50.00-430.00] MS
 Aperta19

Aperta19#3041-3054 RT: 7.53-7.56 AV:

F: FTMS + p ESI d Full ms2 403.32 ...

m/z= 50.00000-1000.00000

m/z	Intensity	Relative
50.16200	966.6	0.64
53.10970	906.9	0.60
54.11957	1122.2	0.74
55.76441	939.3	0.62
58.06605	3132.6	2.07
61.76219	1083.4	0.72
62.53076	1129.0	0.75
62.99173	1207.5	0.80
65.80636	1071.4	0.71
70.03180	1302.6	0.86
70.60132	1153.5	0.76
71.28746	1014.2	0.67
76.76593	1151.7	0.76
77.15653	1177.6	0.78
90.76914	1122.8	0.74
94.16950	1263.6	0.84
94.73728	1146.6	0.76
98.09702	105687.7	69.87
115.12343	59164.9	39.11
122.06665	1134.4	0.75
130.06568	18421.7	12.18
133.59928	1430.6	0.95
172.18086	52110.3	34.45
184.61338	1411.0	0.93
187.08752	1534.2	1.01
197.01287	1448.7	0.96
214.13456	13437.8	8.88
215.11815	151261.5	100.00
233.16963	1289.1	0.85
246.26517	6268.7	4.14
250.43797	1379.2	0.91
251.20252	1454.7	0.96
251.54764	1390.8	0.92
272.17603	54765.3	36.21
289.20305	15169.8	10.03
311.22371	11724.3	7.75
329.23371	39403.1	26.05
371.43634	1368.6	0.90
385.30772	59561.3	39.38
386.29393	2130.6	1.41
403.31827	127635.8	84.38



NL: 2.07E7
 Aperta19#3049 RT: 7.55
 AV: 1 T: FTMS + p ESI
 Full lock ms
 [100.00-1500.00]

NL: 1.51E5
 Aperta19#3038-3056
 RT: 7.53-7.56 AV: 3 F:
 FTMS + p ESI d Full ms2
 403.32@hcd35.00
 [50.00-430.00]