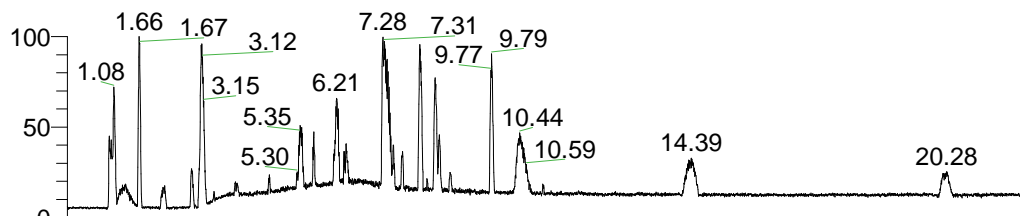


RT: 0.00 - 22.01



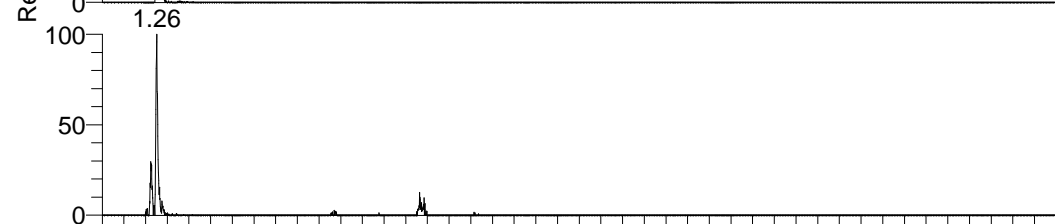
NL: 1.41E8  
 Base Peak m/z=  
 100.00000-1500.00000 F:  
 FTMS + p ESI Full ms  
 [100.00-1500.00] MS  
 Aperta\_HDX

Aaperta\_HDX#196 RT: 1.25  
 T: FTMS + p ESI Full ms [100.00-1500.00]  
 m/z= 408.00000-409.00000

m/z	Intensity	Relative	Delta (ppm)	Composition
408.40320	767989.4	100.00	-1.45	C <sub>20</sub> H <sub>38</sub> <sup>2</sup> H <sub>7</sub> O <sub>2</sub> N <sub>6</sub>
			2.35	C <sub>20</sub> H <sub>36</sub> <sup>2</sup> H <sub>8</sub> O <sub>2</sub> N <sub>6</sub>
			-5.24	C <sub>20</sub> H <sub>40</sub> <sup>2</sup> H <sub>6</sub> O <sub>2</sub> N <sub>6</sub>
			6.14	C <sub>20</sub> H <sub>34</sub> <sup>2</sup> H <sub>9</sub> O <sub>2</sub> N <sub>6</sub>
			-9.03	C <sub>20</sub> H <sub>42</sub> <sup>2</sup> H <sub>5</sub> O <sub>2</sub> N <sub>6</sub>
			9.93	C <sub>20</sub> H <sub>32</sub> <sup>2</sup> H <sub>10</sub> O <sub>2</sub> N <sub>6</sub>



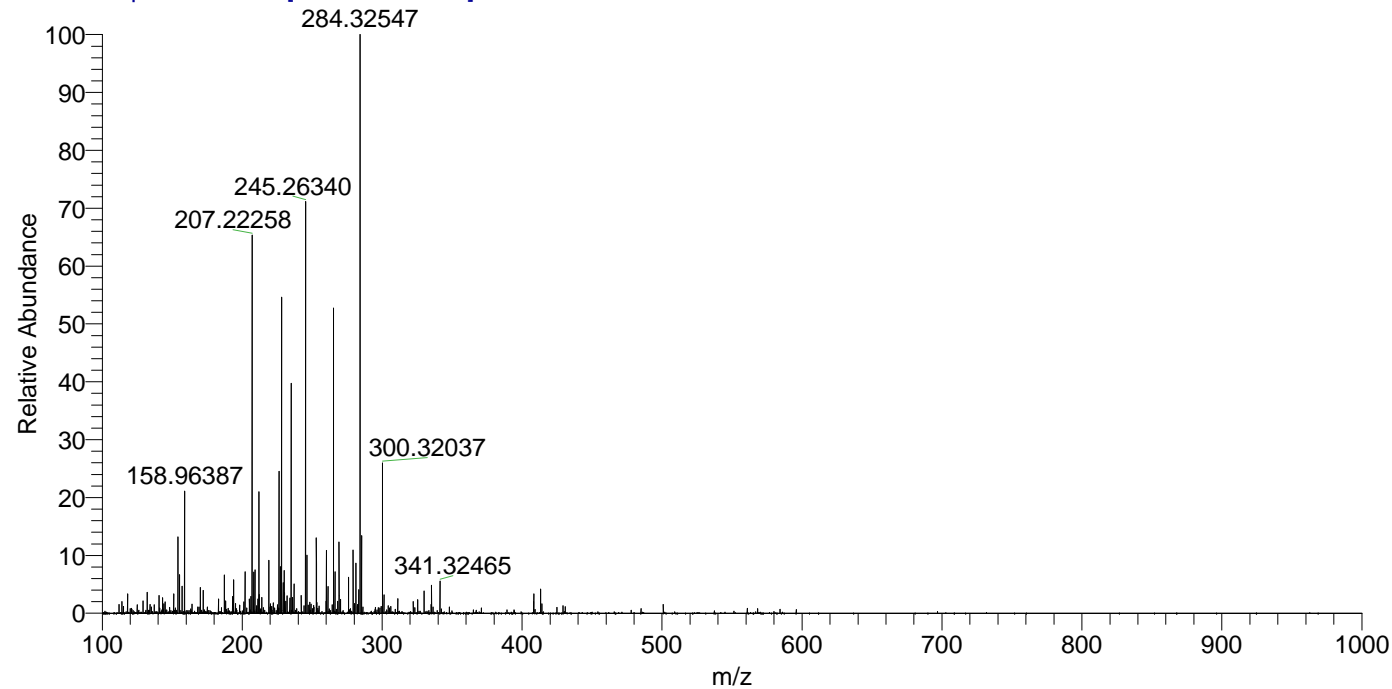
NL: 7.68E5  
 Base Peak m/z=  
 408.40230-408.40638 F:  
 FTMS + p ESI Full ms  
 [100.00-1500.00] MS  
 Aperta\_HDX



NL: 6.33E5  
 Base Peak m/z=  
 205.20819-205.21025 F:  
 FTMS + p ESI Full ms  
 [100.00-1500.00] MS  
 Aperta\_HDX

Aaperta\_HDX #196 RT: 1.25 AV: 1 NL: 2.24E7

T: FTMS + p ESI Full ms [100.00-1500.00]



Aaperta\_HDX #196 RT: 1.25 AV: 1 NL: 7.51E5

T: FTMS + p ESI Full ms [100.00-1500.00]

