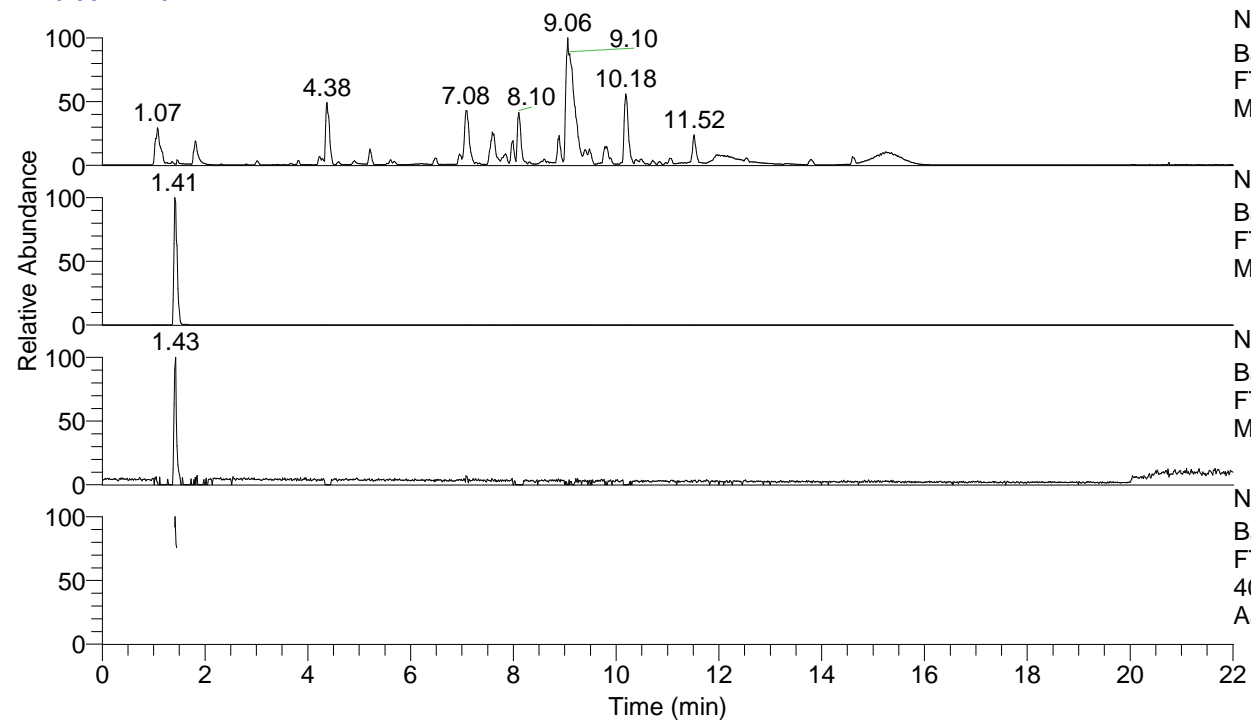


RT: 0.00 - 22.01



NL: 1.54E8
 Base Peak m/z= 100.00000-1500.00000 F:
 FTMS + p ESI Full ms [100.00-1500.00]
 MS Aperta19

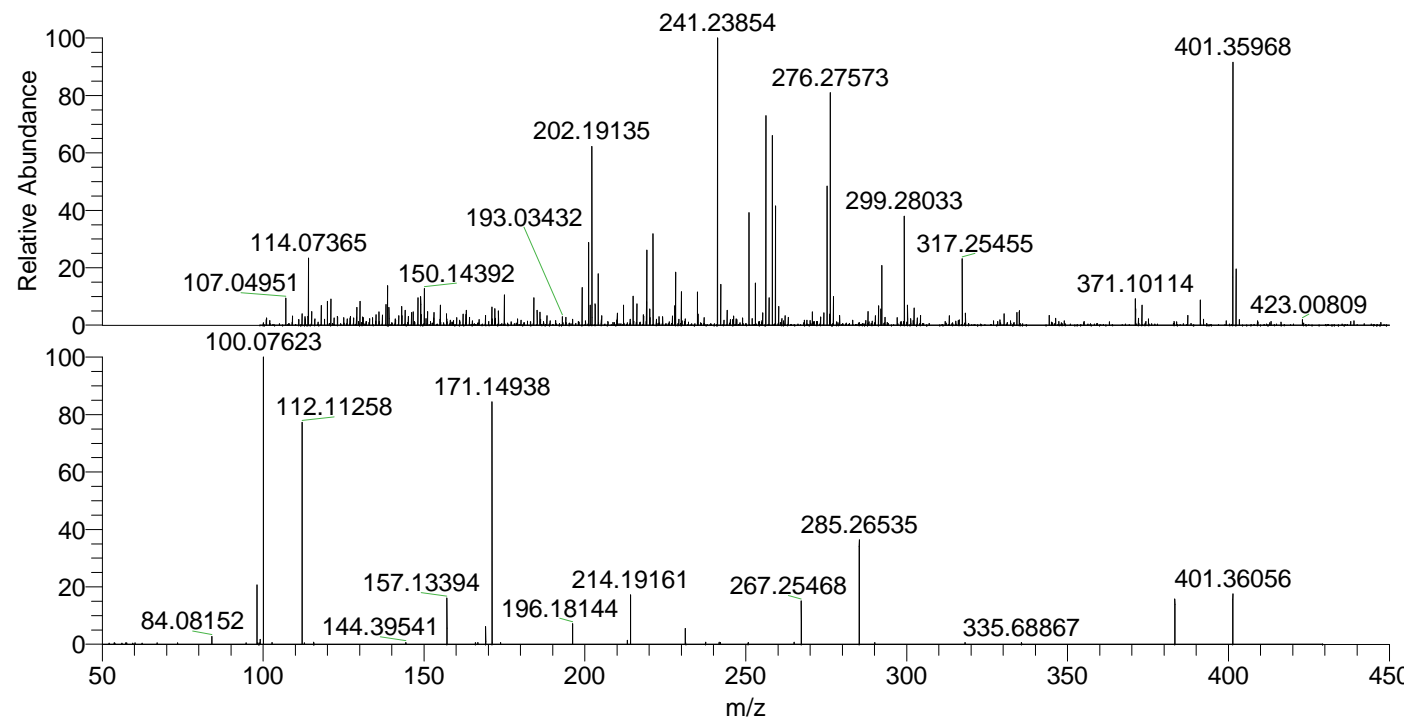
NL: 1.48E6
 Base Peak m/z= 401.35839-401.36241 F:
 FTMS + p ESI Full ms [100.00-1500.00]
 MS Aperta19

NL: 5.36E5
 Base Peak m/z= 201.18310-201.18512 F:
 FTMS + p ESI Full ms [100.00-1500.00]
 MS Aperta19

NL: 1.92E5
 Base Peak m/z= 50.00000-1500.00000 F:
 FTMS + p ESI d Full ms2
 401.36@hcd35.00 [50.00-425.00] MS
 Aperta19

Aperta19#576-591 RT: 1.41-1.45 AV: 4
 F: FTMS + p ESI d Full ms2 401.36 ...
 m/z= 50.00000-1000.00000

| m/z | Intensity | Relative |
|-----------|-----------|----------|
| 73.46634 | 846.2 | 0.51 |
| 84.08152 | 4550.1 | 2.76 |
| 94.70764 | 835.8 | 0.51 |
| 98.09696 | 35454.6 | 21.50 |
| 98.33003 | 847.9 | 0.51 |
| 98.74781 | 914.1 | 0.55 |
| 99.09235 | 2855.6 | 1.73 |
| 99.11748 | 923.2 | 0.56 |
| 100.07623 | 164890.0 | 100.00 |
| 102.79222 | 953.2 | 0.58 |
| 112.11258 | 128432.3 | 77.89 |
| 112.12031 | 2179.7 | 1.32 |
| 112.85181 | 892.8 | 0.54 |
| 115.75209 | 1108.2 | 0.67 |
| 144.39541 | 1043.8 | 0.63 |
| 157.13394 | 27141.3 | 16.46 |
| 165.99236 | 915.5 | 0.56 |
| 166.73103 | 960.8 | 0.58 |
| 169.17020 | 10223.0 | 6.20 |
| 171.14938 | 139299.6 | 84.48 |
| 173.78980 | 992.7 | 0.60 |
| 196.18144 | 11929.9 | 7.24 |
| 213.20740 | 2306.4 | 1.40 |
| 214.19161 | 28336.8 | 17.19 |
| 231.21880 | 9428.8 | 5.72 |
| 231.33676 | 976.6 | 0.59 |
| 237.50556 | 891.1 | 0.54 |
| 237.53005 | 1154.4 | 0.70 |
| 241.71645 | 1153.3 | 0.70 |
| 242.14195 | 981.8 | 0.60 |
| 250.75122 | 1085.6 | 0.66 |
| 265.02913 | 1230.3 | 0.75 |
| 267.25468 | 25091.5 | 15.22 |
| 285.26535 | 61074.9 | 37.04 |
| 290.09424 | 1031.5 | 0.63 |
| 318.16224 | 966.1 | 0.59 |
| 335.68867 | 1102.8 | 0.67 |
| 383.35017 | 26173.2 | 15.87 |
| 401.36056 | 29233.0 | 17.73 |



NL: 1.61E6
 Aperta19#577 RT: 1.41
 AV: 1 T: FTMS + p ESI
 Full lock ms
 [100.00-1500.00]

NL: 1.65E5
 Aperta19#568-595 RT:
 1.41-1.45 AV: 4 F: FTMS
 + p ESI d Full ms2
 401.36@hcd35.00
 [50.00-425.00]