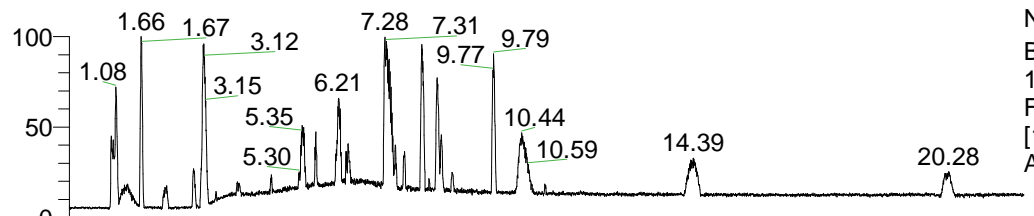


RT: 0.00 - 22.01



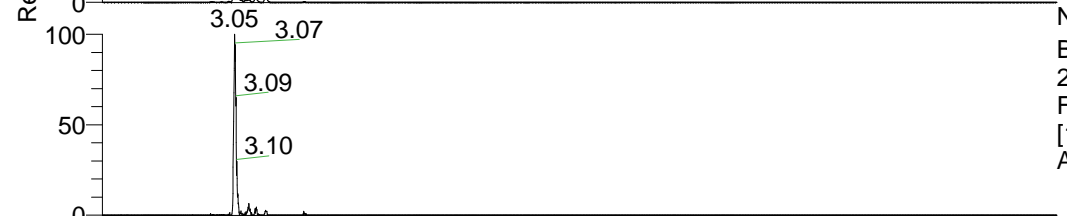
NL: 1.41E8
 Base Peak m/z=
 100.00000-1500.00000 F:
 FTMS + p ESI Full ms
 [100.00-1500.00] MS
 Aperta_HDX

Aperta_HDX#489 RT: 3.05
 T: FTMS + p ESI Full ms [100.00-1500.00]
 m/z= 404.00000-405.00000

m/z	Intensity	Relative	Delta (ppm)	Composition
404.34653	36945012.0	100.00	-1.49	C ₂₀ H ₃₀ ² H ₈ O ₃ N ₅
			2.34	C ₂₀ H ₂₈ ² H ₉ O ₃ N ₅
			-5.32	C ₂₀ H ₃₂ ² H ₇ O ₃ N ₅
			6.17	C ₂₀ H ₂₆ ² H ₁₀ O ₃ N ₅
			-9.15	C ₂₀ H ₃₄ ² H ₆ O ₃ N ₅

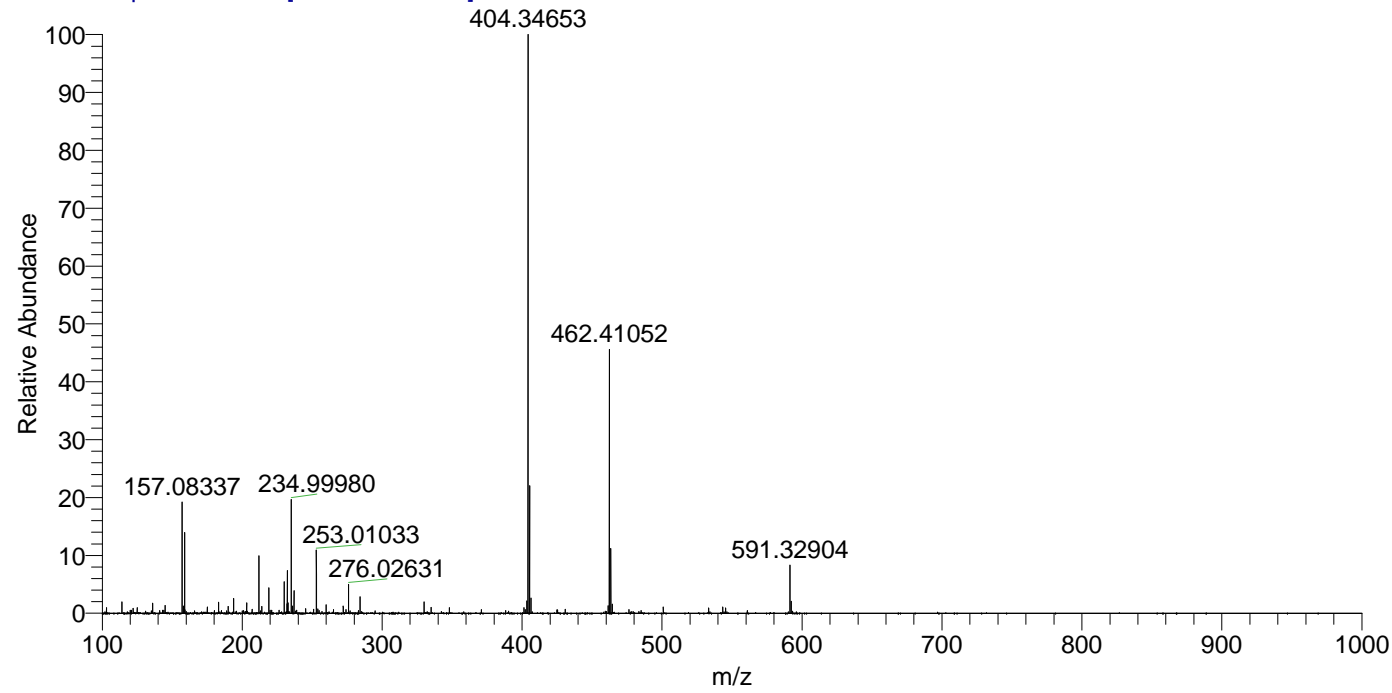


NL: 4.53E7
 Base Peak m/z=
 404.34566-404.34970 F:
 FTMS + p ESI Full ms
 [100.00-1500.00] MS
 Aperta_HDX



NL: 7.97E5
 Base Peak m/z=
 203.17987-203.18191 F:
 FTMS + p ESI Full ms
 [100.00-1500.00] MS
 Aperta_HDX

Aperta_HDX #489 RT: 3.05 AV: 1 NL: 3.54E7
 T: FTMS + p ESI Full ms [100.00-1500.00]



Aperta_HDX #489 RT: 3.05 AV: 1 NL: 3.54E7
 T: FTMS + p ESI Full ms [100.00-1500.00]

