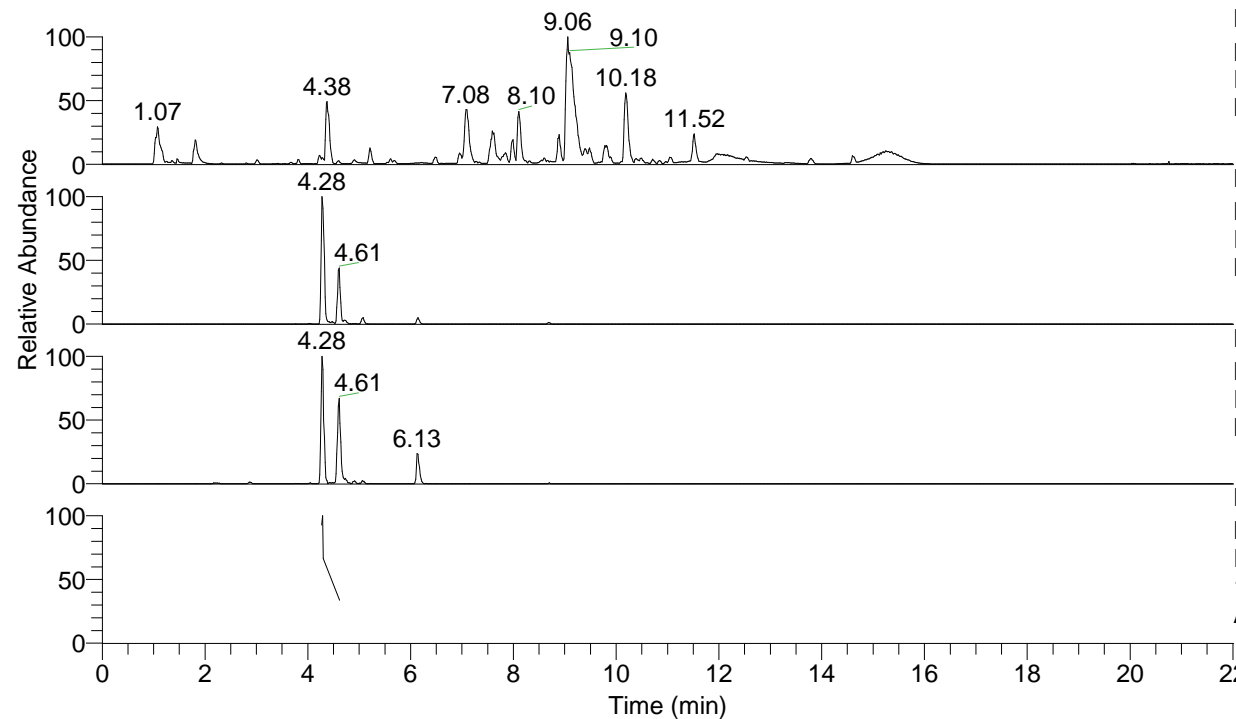


RT: 0.00 - 22.01



NL: 1.54E8
 Base Peak m/z= 100.00000-1500.00000 F:
 FTMS + p ESI Full ms [100.00-1500.00]
 MS Aperta19

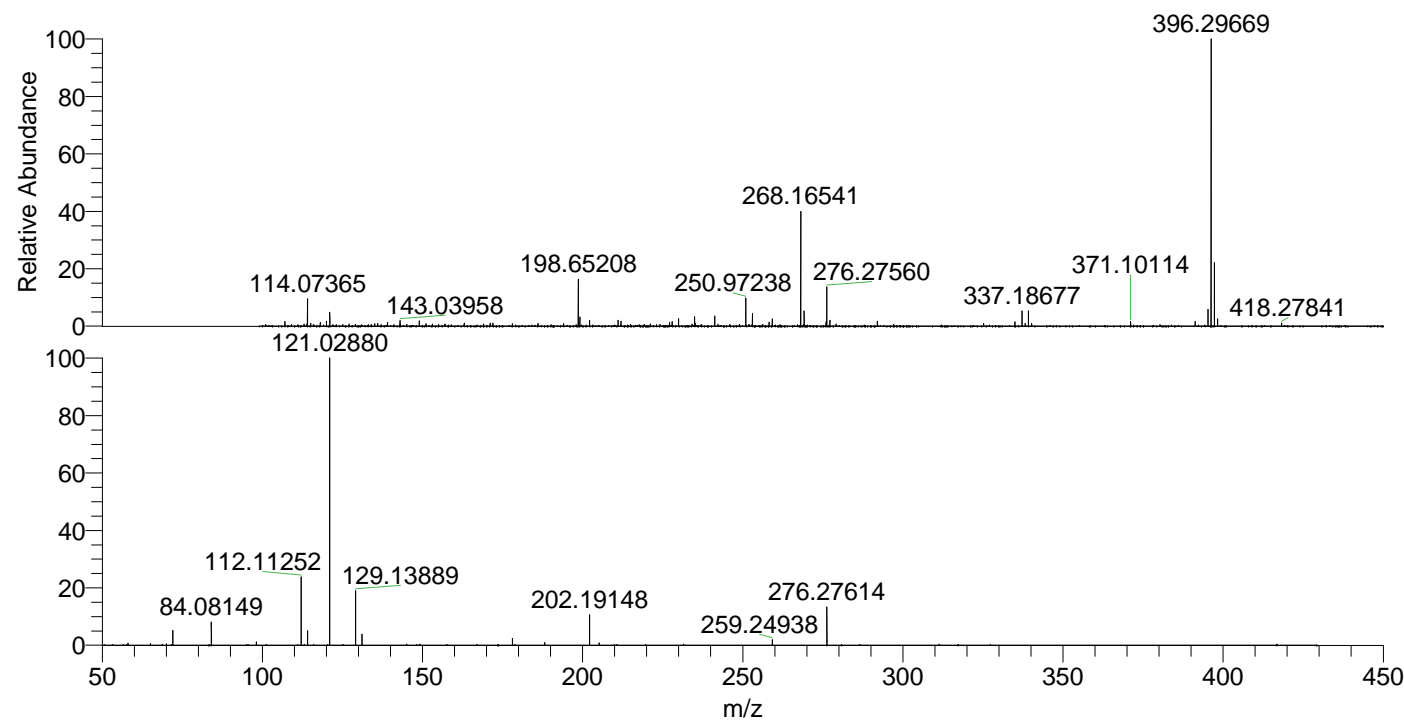
NL: 8.37E6
 Base Peak m/z= 396.29549-396.29945 F:
 FTMS + p ESI Full ms [100.00-1500.00]
 MS Aperta19

NL: 1.29E6
 Base Peak m/z= 198.65166-198.65364 F:
 FTMS + p ESI Full ms [100.00-1500.00]
 MS Aperta19

NL: 3.75E5
 Base Peak m/z= 50.00000-1500.00000 F:
 FTMS + p ESI d Full ms2
 198.65@hcd35.00 [50.00-425.00] MS
 Aperta19

Aperta19#1726-1738 RT: 4.27-4.30 AV:
 F: FTMS + p ESI d Full ms2 198.65 ...
 m/z= 50.00000-1000.00000

m/z	Intensity	Relative
58.06605	2082.8	0.68
65.03949	1844.0	0.60
70.06605	1577.4	0.51
72.08160	15879.0	5.18
84.08149	25158.4	8.20
98.09693	3512.2	1.15
112.11252	72594.9	23.68
114.09181	15547.4	5.07
121.02880	306626.8	100.00
129.13889	57984.3	18.91
131.11820	12186.1	3.97
178.08626	7341.1	2.39
188.17622	2776.1	0.91
202.19148	33017.5	10.77
205.20227	2411.4	0.79
259.24938	5973.7	1.95
276.27614	41415.2	13.51



NL: 7.86E6
 Aperta19#1729 RT: 4.28
 AV: 1 T: FTMS + p ESI
 Full lock ms
 [100.00-1500.00]

NL: 3.04E5
 Aperta19#1713-1753
 RT: 4.27-4.30 AV: 3 F:
 FTMS + p ESI d Full ms2
 198.65@hcd35.00
 [50.00-425.00]