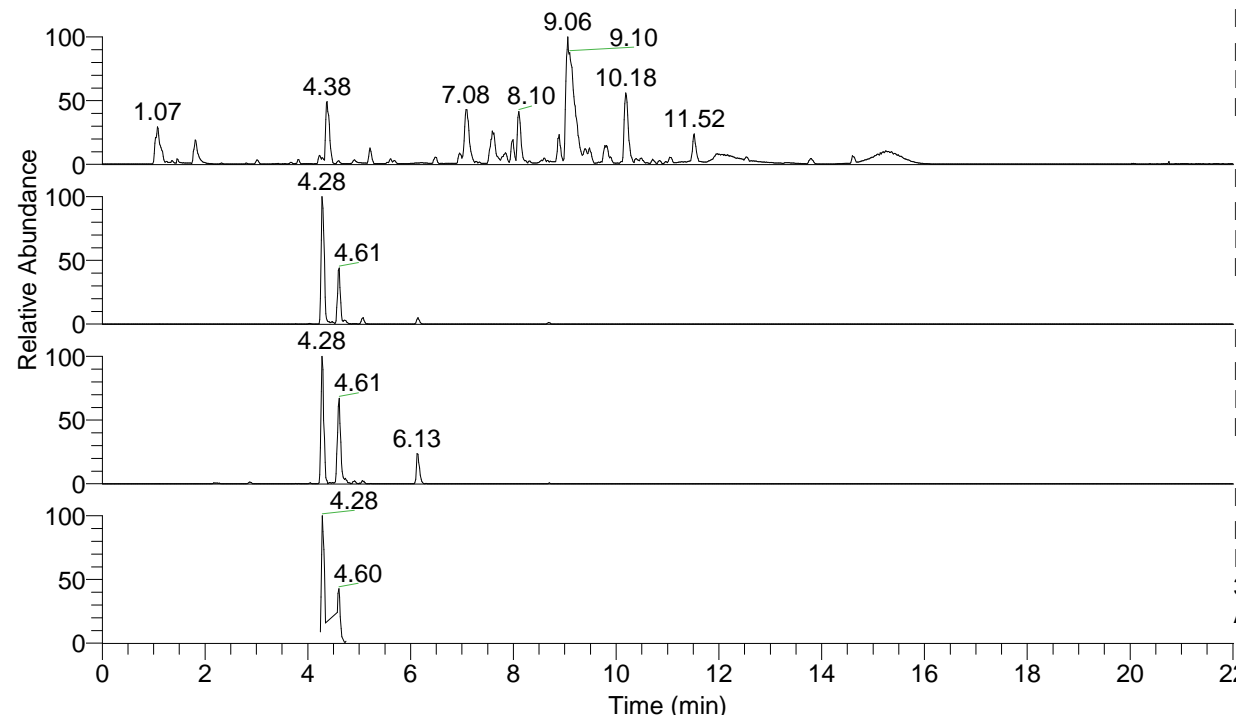


RT: 0.00 - 22.01



NL: 1.54E8
 Base Peak m/z= 100.00000-1500.00000 F:
 FTMS + p ESI Full ms [100.00-1500.00]
 MS Aperta19

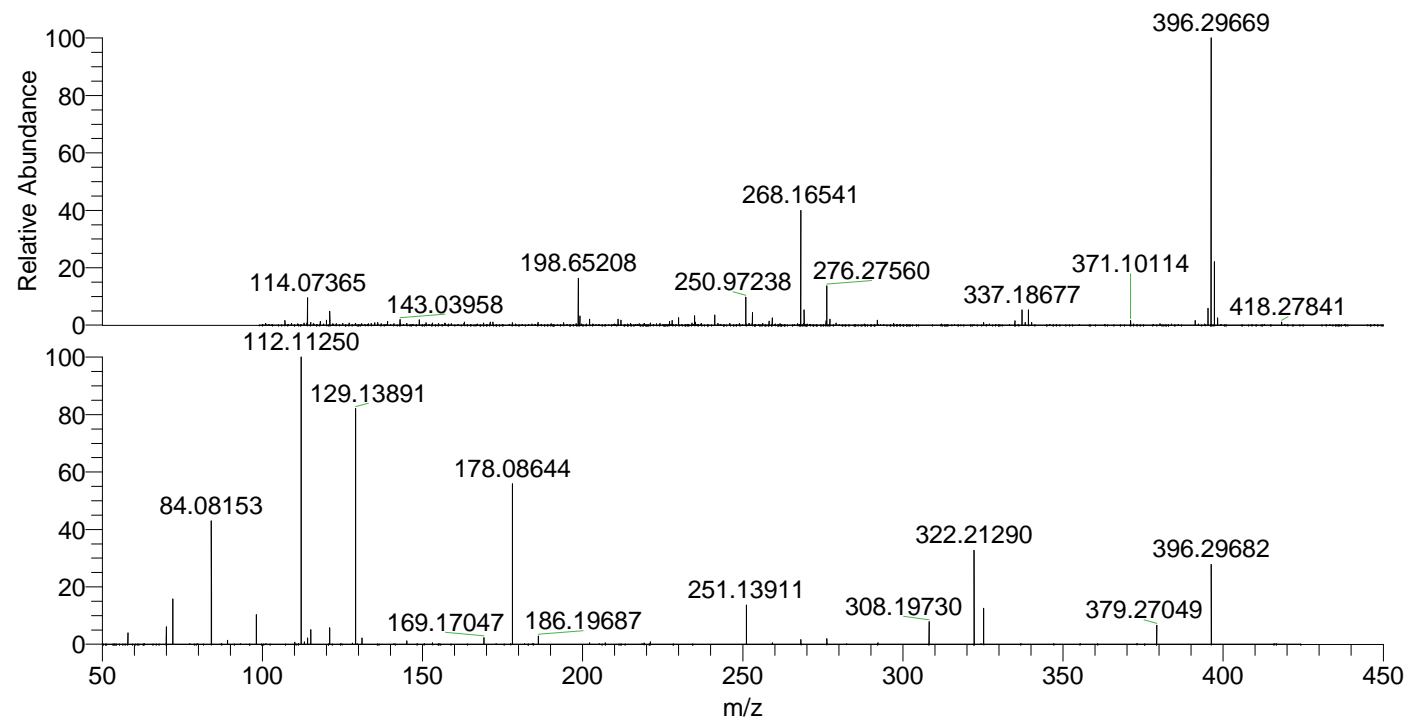
NL: 8.37E6
 Base Peak m/z= 396.29549-396.29945 F:
 FTMS + p ESI Full ms [100.00-1500.00]
 MS Aperta19

NL: 1.29E6
 Base Peak m/z= 198.65166-198.65364 F:
 FTMS + p ESI Full ms [100.00-1500.00]
 MS Aperta19

NL: 9.63E5
 Base Peak m/z= 50.00000-1500.00000 F:
 FTMS + p ESI d Full ms2
 396.30@hcd35.00 [50.00-420.00] MS
 Aperta19

Aperta19#1715-1755 RT: 4.24-4.34 AV:
 F: FTMS + p ESI d Full ms2 396.30 ...
 m/z= 50.00000-1000.00000

m/z	Intensity	Relative
58.06604	19714.4	3.89
70.06599	30538.0	6.03
72.08158	79741.8	15.75
84.08153	216133.0	42.69
89.10808	7313.0	1.44
98.09705	51935.6	10.26
110.09711	3511.6	0.69
112.11250	506336.1	100.00
113.10774	4223.4	0.83
114.09193	11001.0	2.17
115.12344	25477.0	5.03
121.02887	28797.2	5.69
129.13891	411043.7	81.18
131.11828	11049.3	2.18
145.13361	5852.6	1.16
153.13895	2714.4	0.54
169.17047	11316.1	2.23
178.08644	290485.2	57.37
186.19687	15045.8	2.97
202.19149	2579.2	0.51
221.12858	4189.1	0.83
251.13911	70135.1	13.85
259.25092	2550.8	0.50
268.16589	8244.2	1.63
276.27574	9675.1	1.91
308.19730	39264.2	7.75
322.21290	166393.6	32.86
325.22371	64371.7	12.71
379.27049	33117.7	6.54
396.29682	140189.3	27.69



NL: 7.86E6
 Aperta19#1729 RT: 4.28
 AV: 1 T: FTMS + p ESI
 Full lock ms
 [100.00-1500.00]

NL: 5.01E5
 Aperta19#1715-1758
 RT: 4.24-4.34 AV: 8 F:
 FTMS + p ESI d Full ms2
 396.30@hcd35.00
 [50.00-420.00]