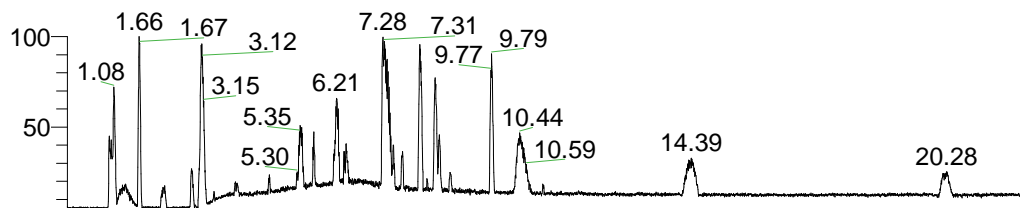


RT: 0.00 - 22.01



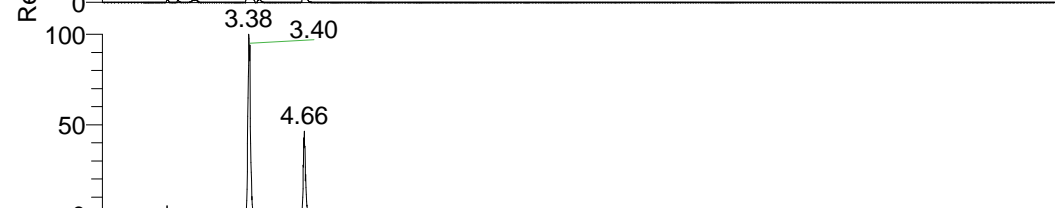
NL: 1.41E8
 Base Peak m/z=
 100.00000-1500.00000 F:
 FTMS + p ESI Full ms
 [100.00-1500.00] MS
 Aperta_HDX

Aperta_HDX#548 RT: 3.39
 T: FTMS + p ESI Full ms [100.00-1500.00]
 m/z= 405.00000-406.00000

m/z	Intensity	Relative	Delta (ppm)	Composition
405.35291	19103548.0	100.00	-1.24	C ₂₀ H ₂₉ ² H ₉ O ₃ N ₅
			2.58	C ₂₀ H ₂₇ ² H ₁₀ O ₃ N ₅
			-5.06	C ₂₀ H ₃₁ ² H ₈ O ₃ N ₅
			-8.88	C ₂₀ H ₃₃ ² H ₇ O ₃ N ₅

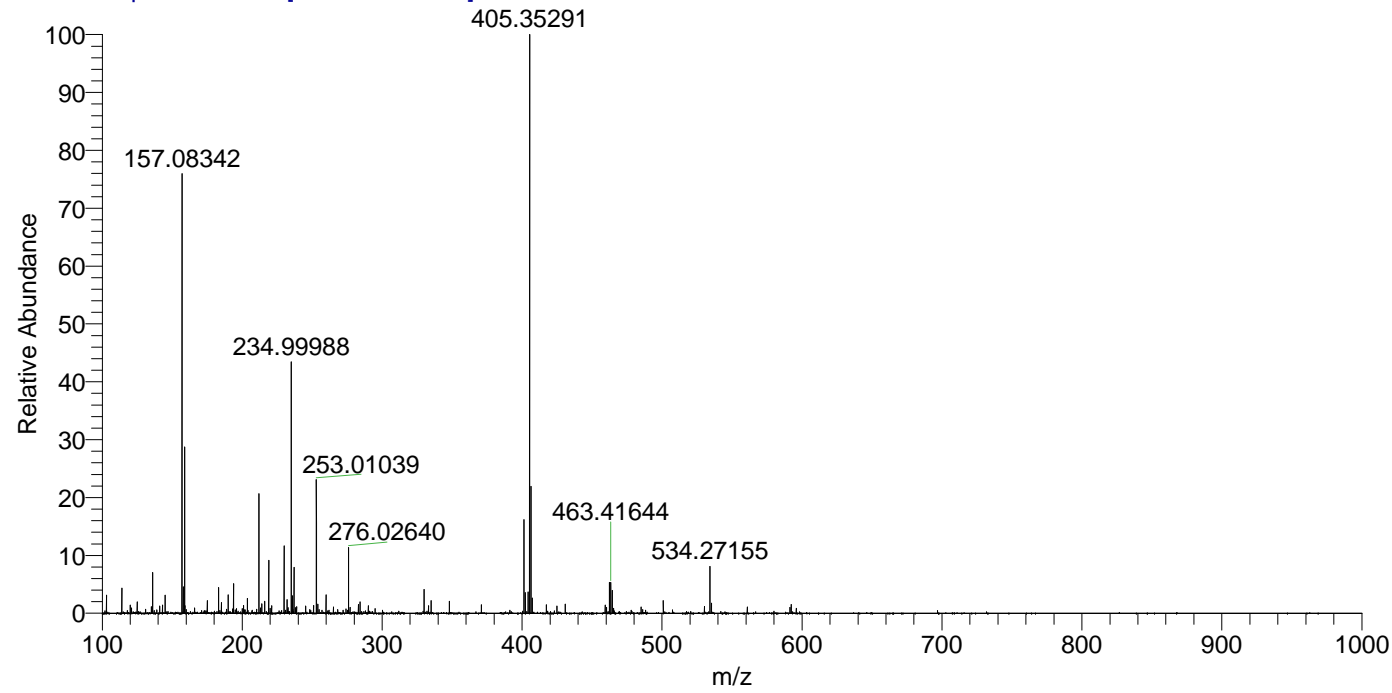


NL: 2.02E7
 Base Peak m/z=
 405.35193-405.35599 F:
 FTMS + p ESI Full ms
 [100.00-1500.00] MS
 Aperta_HDX



NL: 5.22E5
 Base Peak m/z=
 203.68301-203.68505 F:
 FTMS + p ESI Full ms
 [100.00-1500.00] MS
 Aperta_HDX

Aperta_HDX #548 RT: 3.39 AV: 1 NL: 1.83E7
 T: FTMS + p ESI Full ms [100.00-1500.00]



Aperta_HDX #548 RT: 3.39 AV: 1 NL: 1.83E7
 T: FTMS + p ESI Full ms [100.00-1500.00]

