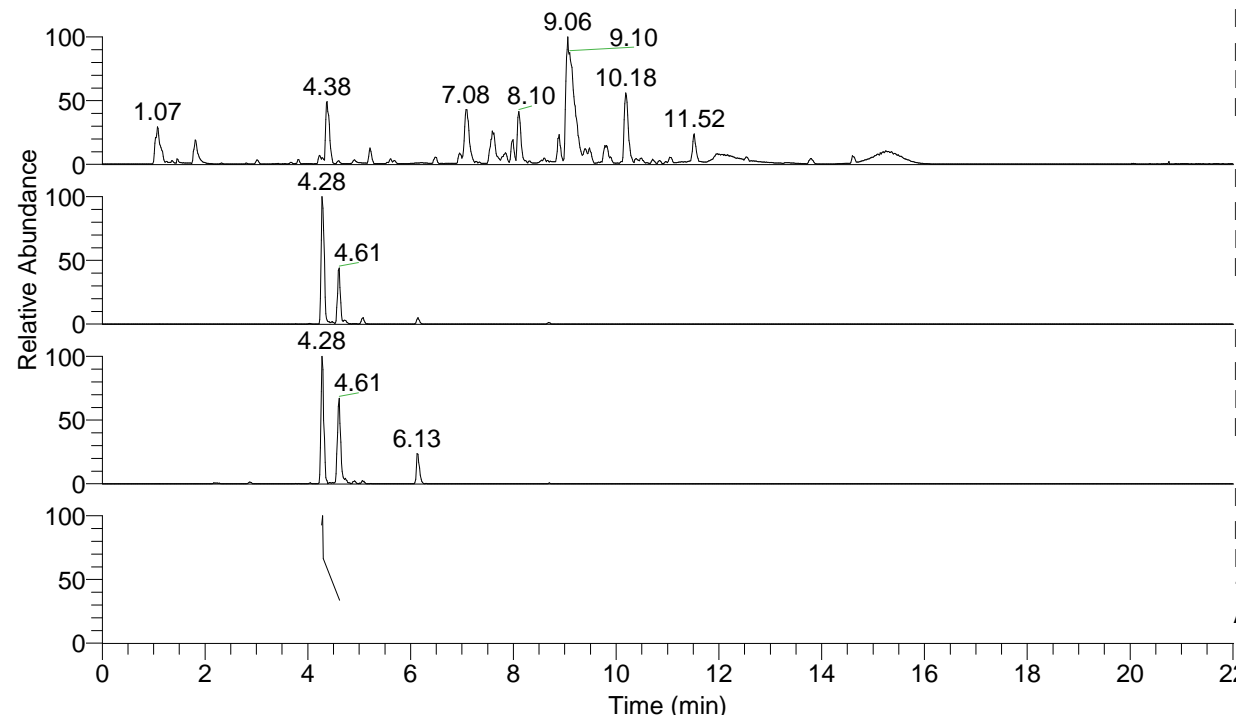


RT: 0.00 - 22.01



NL: 1.54E8
 Base Peak m/z= 100.00000-1500.00000 F:
 FTMS + p ESI Full ms [100.00-1500.00]
 MS Aperta19

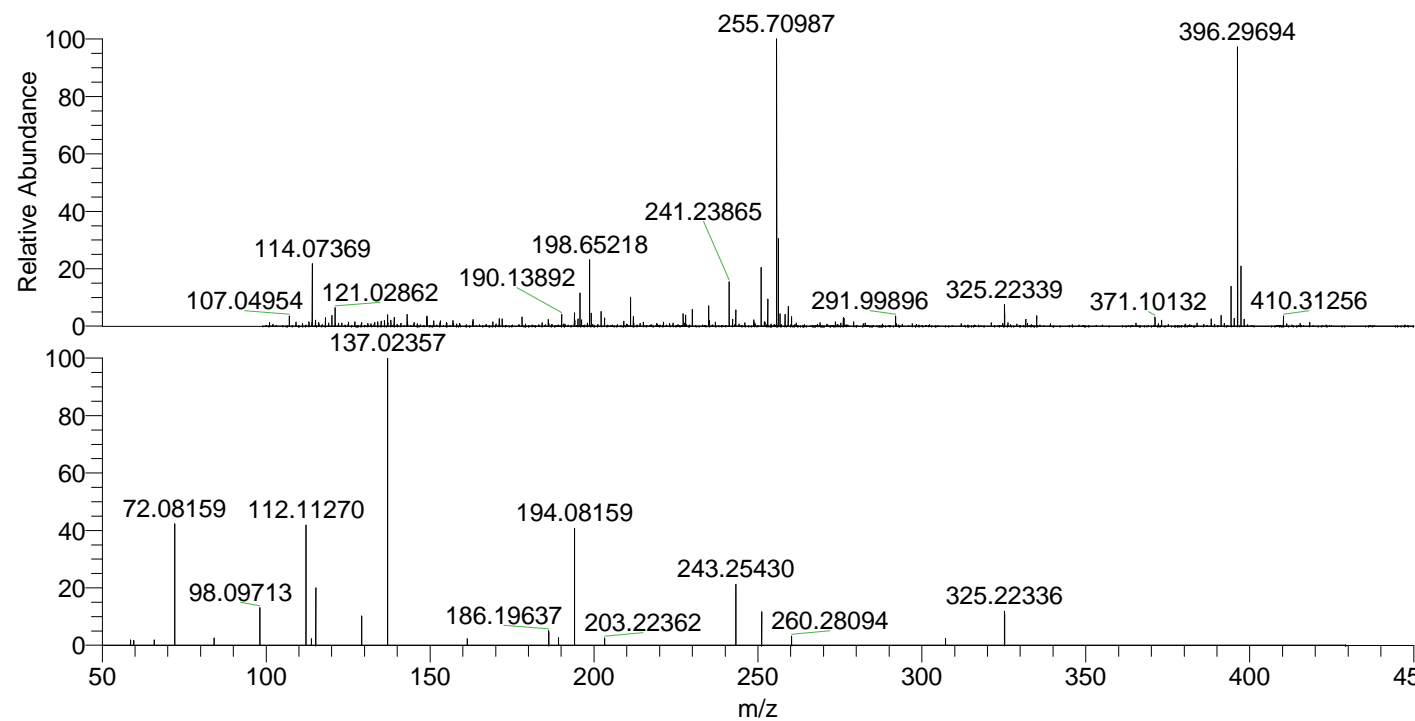
NL: 8.37E6
 Base Peak m/z= 396.29549-396.29945 F:
 FTMS + p ESI Full ms [100.00-1500.00]
 MS Aperta19

NL: 1.29E6
 Base Peak m/z= 198.65166-198.65364 F:
 FTMS + p ESI Full ms [100.00-1500.00]
 MS Aperta19

NL: 3.75E5
 Base Peak m/z= 50.00000-1500.00000 F:
 FTMS + p ESI d Full ms2
 198.65@hcd35.00 [50.00-425.00] MS
 Aperta19

Aaperta19#1871 RT: 4.62
 F: FTMS + p ESI d Full ms2 198.65 ...
 m/z= 50.00000-1000.00000

m/z	Intensity	Relative
58.64801	2252.9	1.78
59.59279	2099.2	1.66
65.82646	2278.5	1.80
72.08159	52802.2	41.69
84.08135	2998.7	2.37
98.09713	16572.1	13.09
112.11270	50865.5	40.16
113.79520	2845.3	2.25
115.12331	24117.7	19.04
129.13908	12692.3	10.02
137.02357	126643.7	100.00
161.35045	2815.1	2.22
186.19637	6198.2	4.89
189.20718	3196.7	2.52
194.08159	49180.3	38.83
203.22362	3008.6	2.38
243.25430	26675.3	21.06
251.13892	14037.5	11.08
260.28094	3834.1	3.03
307.21606	2865.1	2.26
325.22336	14665.2	11.58



NL: 3.69E6
 Aaperta19#1867 RT:
 4.61 AV: 1 T: FTMS +
 p ESI Full lock ms
 [100.00-1500.00]

NL: 1.20E5
 Aaperta19#1854 RT:
 4.62 AV: 1 F: FTMS +
 p ESI d Full ms2
 198.65@hcd35.00
 [50.00-425.00]