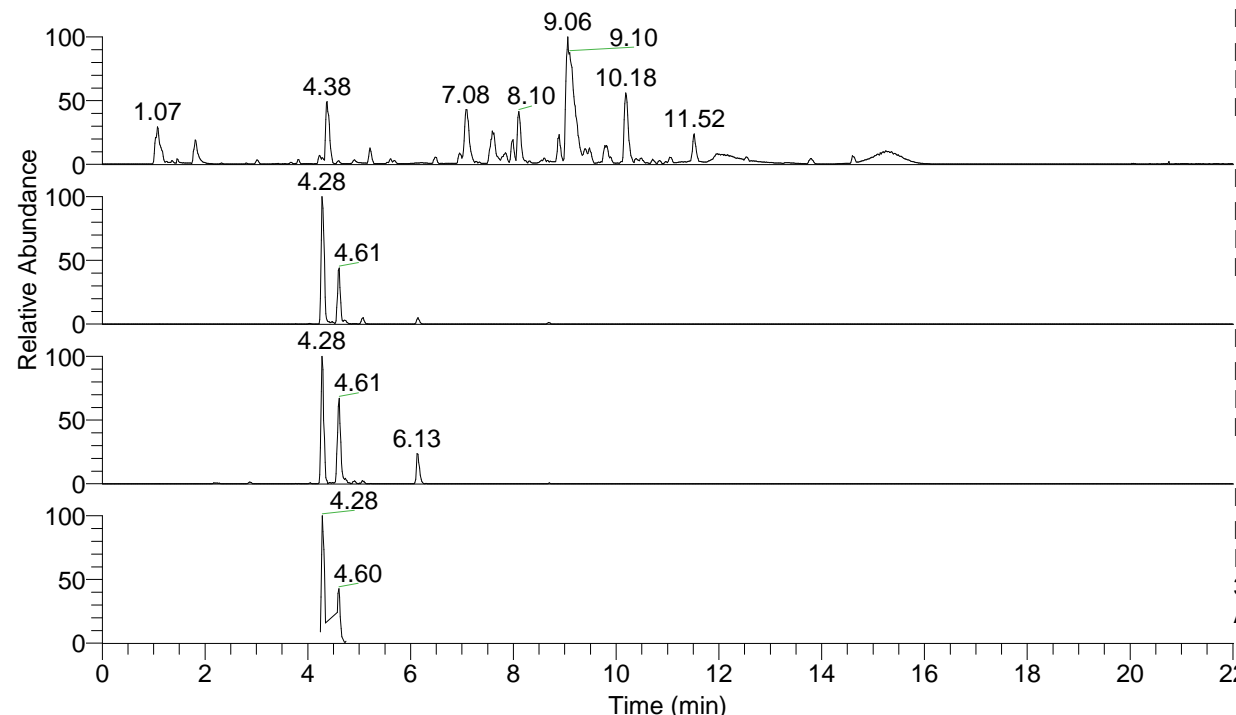


RT: 0.00 - 22.01



NL: 1.54E8
 Base Peak m/z= 100.00000-1500.00000 F:
 FTMS + p ESI Full ms [100.00-1500.00]
 MS Aperta19

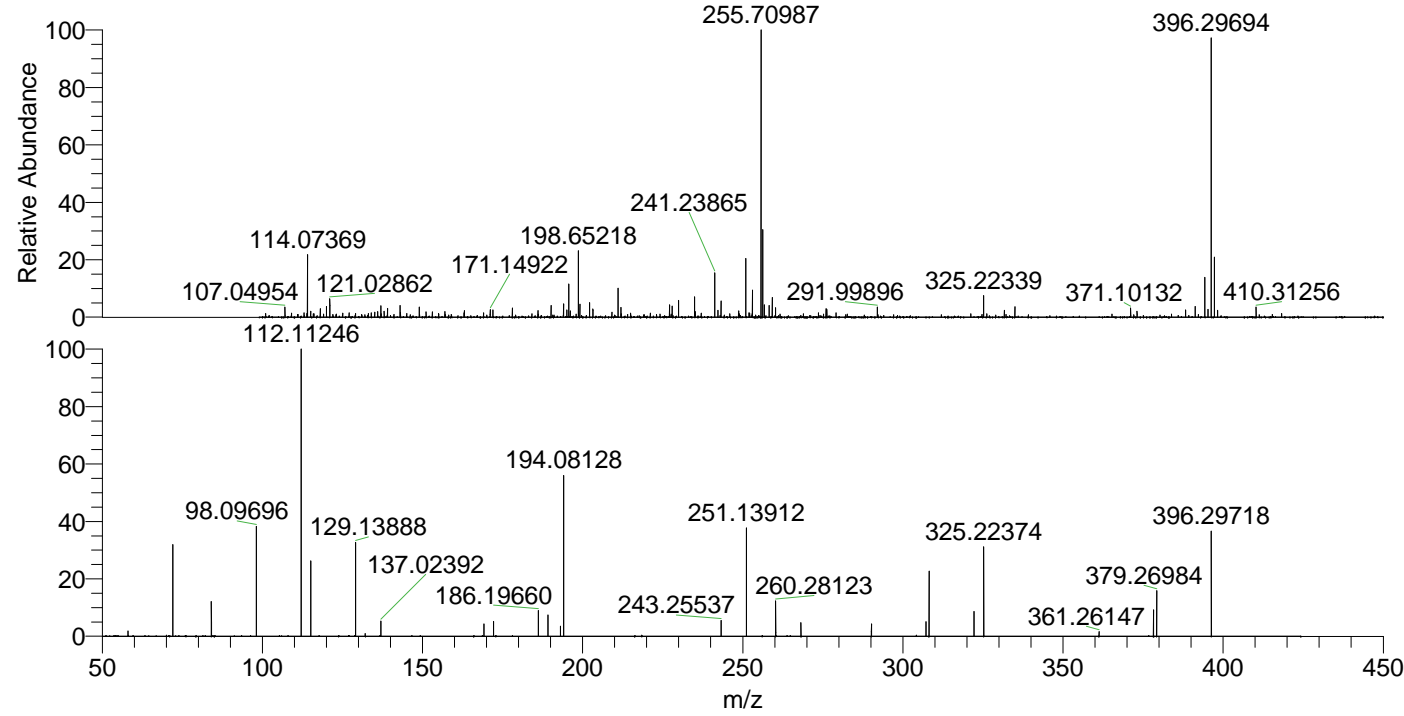
NL: 8.37E6
 Base Peak m/z= 396.29549-396.29945 F:
 FTMS + p ESI Full ms [100.00-1500.00]
 MS Aperta19

NL: 1.29E6
 Base Peak m/z= 198.65166-198.65364 F:
 FTMS + p ESI Full ms [100.00-1500.00]
 MS Aperta19

NL: 9.63E5
 Base Peak m/z= 50.00000-1500.00000 F:
 FTMS + p ESI d Full ms2
 396.30@hcd35.00 [50.00-420.00] MS
 Aperta19

Aaperta19#1853-1919 RT: 4.58-4.74 AV:
 F: FTMS + p ESI d Full ms2 396.30 ...
 m/z= 50.00000-1000.00000

m/z	Intensity	Relative
58.06607	3005.1	1.82
72.08157	53343.1	32.36
84.08155	21399.9	12.98
98.09697	63204.6	38.34
112.11245	164848.7	100.00
115.12332	44400.0	26.93
129.13888	53417.5	32.40
132.15016	1824.1	1.11
137.02392	8009.3	4.86
169.17036	6585.8	4.00
172.18126	8347.2	5.06
186.19661	14385.7	8.73
189.20784	12039.6	7.30
192.10298	847.8	0.51
193.09792	5431.2	3.29
194.08126	92691.3	56.23
221.13007	1035.0	0.63
243.25528	9001.6	5.46
251.13911	62424.3	37.87
260.28127	20560.8	12.47
268.16632	7564.0	4.59
290.18683	6448.4	3.91
307.21386	7758.6	4.71
308.19737	38330.3	23.25
322.21333	13609.8	8.26
325.22378	54356.2	32.97
361.26034	3008.3	1.82
378.28646	14094.8	8.55
379.26986	25968.4	15.75
396.29713	64249.4	38.97



NL: 3.69E6
 Aaperta19#1867 RT: 4.61
 AV: 1 T: FTMS + p ESI
 Full lock ms
 [100.00-1500.00]

NL: 2.99E5
 Aaperta19#1850-1877
 RT: 4.58-4.63 AV: 5 F:
 FTMS + p ESI d Full ms2
 396.30@hcd35.00
 [50.00-420.00]