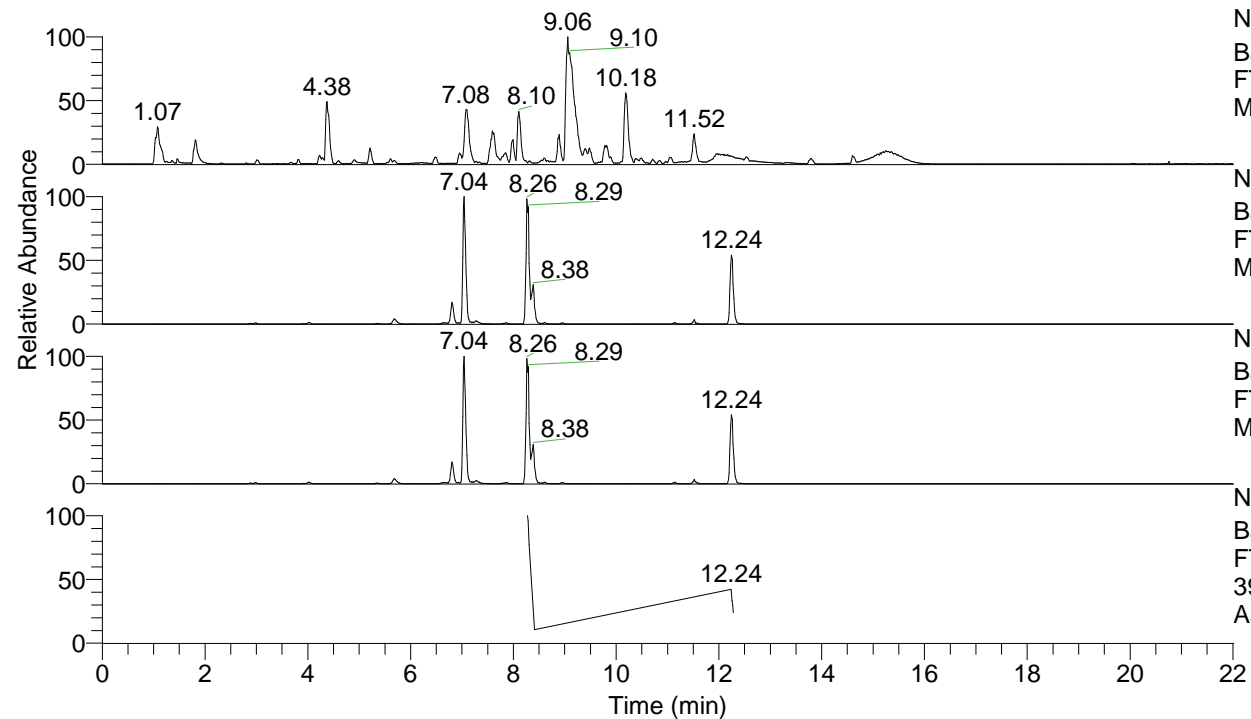


RT: 0.00 - 22.01



NL: 1.54E8
 Base Peak m/z= 100.00000-1500.00000 F:
 FTMS + p ESI Full ms [100.00-1500.00]
 MS Aperta19

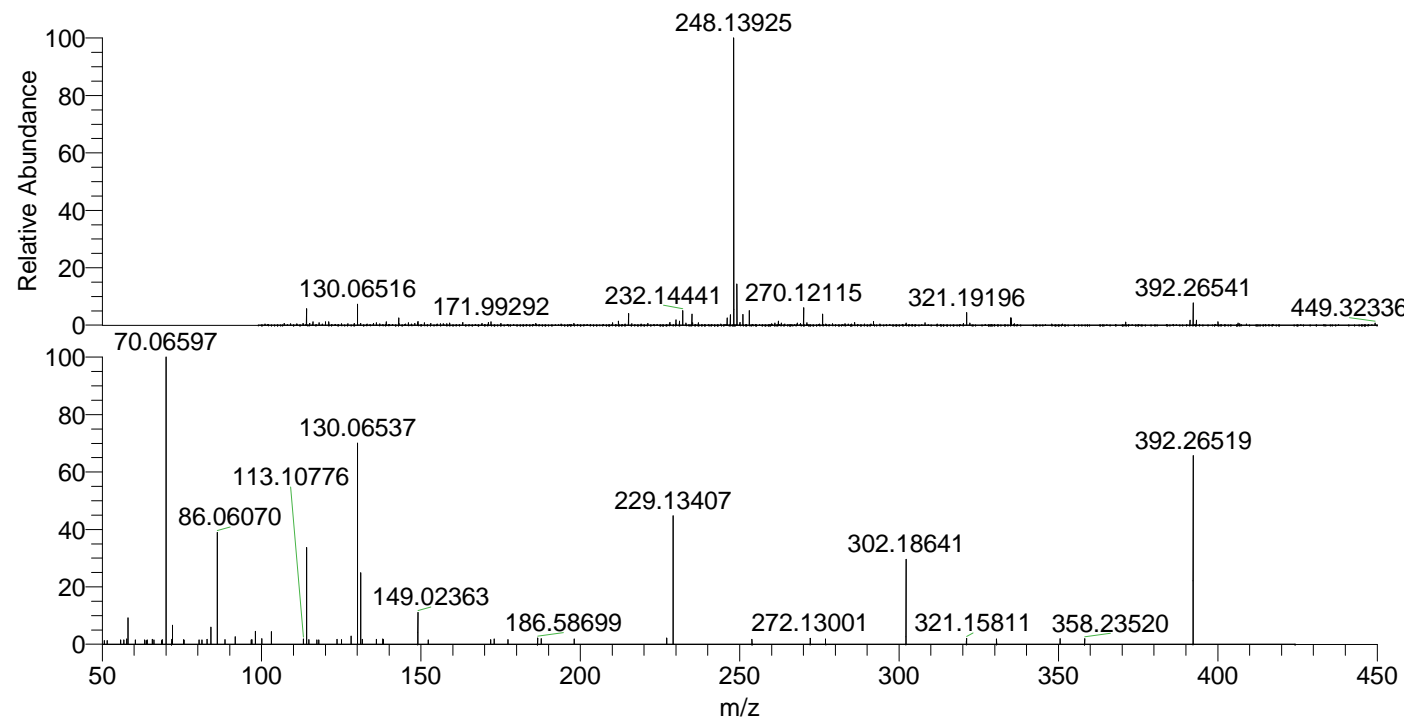
NL: 1.44E6
 Base Peak m/z= 392.26420-392.26812 F:
 FTMS + p ESI Full ms [100.00-1500.00]
 MS Aperta19

NL: 1.44E6
 Base Peak m/z= 392.26370-392.26762 F:
 FTMS + p ESI Full ms [100.00-1500.00]
 MS Aperta19

NL: 1.68E5
 Base Peak m/z= 50.00000-1500.00000 F:
 FTMS + p ESI d Full ms2
 392.27@hcd35.00 [50.00-420.00] MS
 Aperta19

Aperta19#4961-4977 RT: 12.24-12.28
 F: FTMS + p ESI d Full ms2 392.27 ...
 m/z= 50.00000-1000.00000

m/z	Intensity	Relative
55.74192	818.4	1.55
57.69000	968.4	1.83
58.06599	4874.0	9.23
60.43699	821.5	1.56
63.29420	822.5	1.56
65.70880	919.5	1.74
68.86112	820.8	1.55
70.06597	52807.6	100.00
71.79489	908.5	1.72
72.08160	3526.0	6.68
75.51548	831.9	1.58
82.85051	923.5	1.75
84.08165	3129.0	5.93
86.06070	20487.4	38.80
88.52137	854.6	1.62
91.75163	1402.6	2.66
96.97993	858.8	1.63
98.09691	2385.6	4.52
100.07595	1009.0	1.91
103.08687	2375.0	4.50
113.10776	960.6	1.82
114.09187	17736.7	33.59
114.78785	849.5	1.61
117.35376	813.2	1.54
117.89743	816.7	1.55
123.70254	917.1	1.74
125.03424	857.5	1.62
128.10792	1494.3	2.83
130.06537	36884.6	69.85
131.11827	13400.6	25.38
131.60455	919.1	1.74
135.97888	913.7	1.73
138.04786	951.4	1.80
138.22220	845.3	1.60
149.02363	5890.8	11.16
152.31674	826.9	1.57
171.88612	885.4	1.68
172.97098	992.4	1.88
177.29310	851.3	1.61
186.58699	1146.3	2.17
187.76060	1032.1	1.95
198.10526	970.3	1.84
227.11759	1171.2	2.22
229.13407	23718.0	44.91
253.85262	941.4	1.78
272.13001	1078.9	2.04
272.17582	1054.6	2.00
276.94233	960.5	1.82
302.15274	1429.8	2.71
302.18641	15876.7	30.07
321.15811	1082.0	2.05
330.57790	950.5	1.80
350.53243	1043.1	1.98
358.23520	1019.3	1.93
392.26519	35284.5	66.82



NL: 9.62E6
 Aperta19#4963 RT:
 12.24 AV: 1 T: FTMS + p
 ESI Full lock ms
 [100.00-1500.00]

NL: 5.25E4
 Aperta19#4946-4982 RT:
 12.24-12.28 AV: 4 F:
 FTMS + p ESI d Full ms2
 392.27@hcd35.00
 [50.00-420.00]