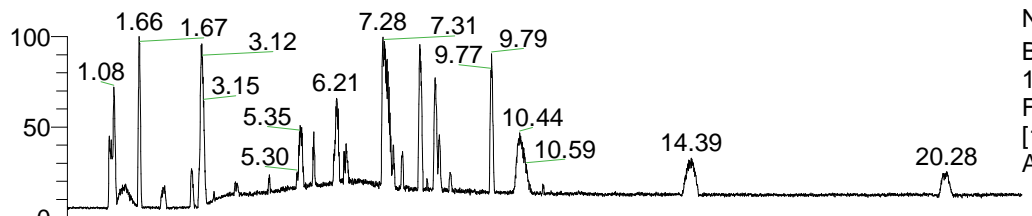


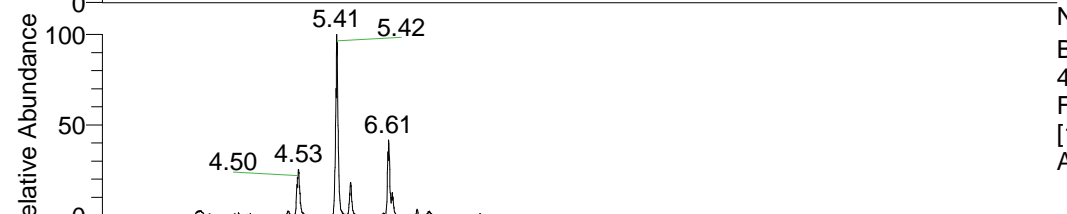
RT: 0.00 - 22.01



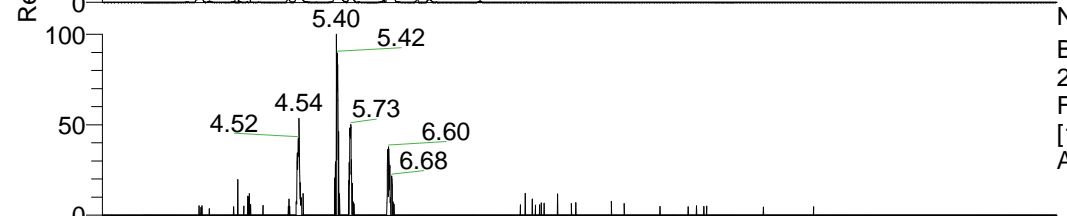
NL: 1.41E8
 Base Peak m/z=
 100.00000-1500.00000 F:
 FTMS + p ESI Full ms
 [100.00-1500.00] MS
 Aperta_HDX

Aperta_HDX#1091 RT: 6.61
 T: FTMS + p ESI Full ms [100.00-1500.00]
 m/z= 400.00000-401.00000

m/z	Intensity	Relative	Delta (ppm)	Composition
400.31519	2191372.5	100.00	-1.61	C ₂₀ H ₂₆ ² H ₈ O ₃ N ₅
			2.26	C ₂₀ H ₂₄ ² H ₉ O ₃ N ₅
			-5.48	C ₂₀ H ₂₈ ² H ₇ O ₃ N ₅
			6.12	C ₂₀ H ₂₂ ² H ₁₀ O ₃ N ₅
			-9.35	C ₂₀ H ₃₀ ² H ₆ O ₃ N ₅



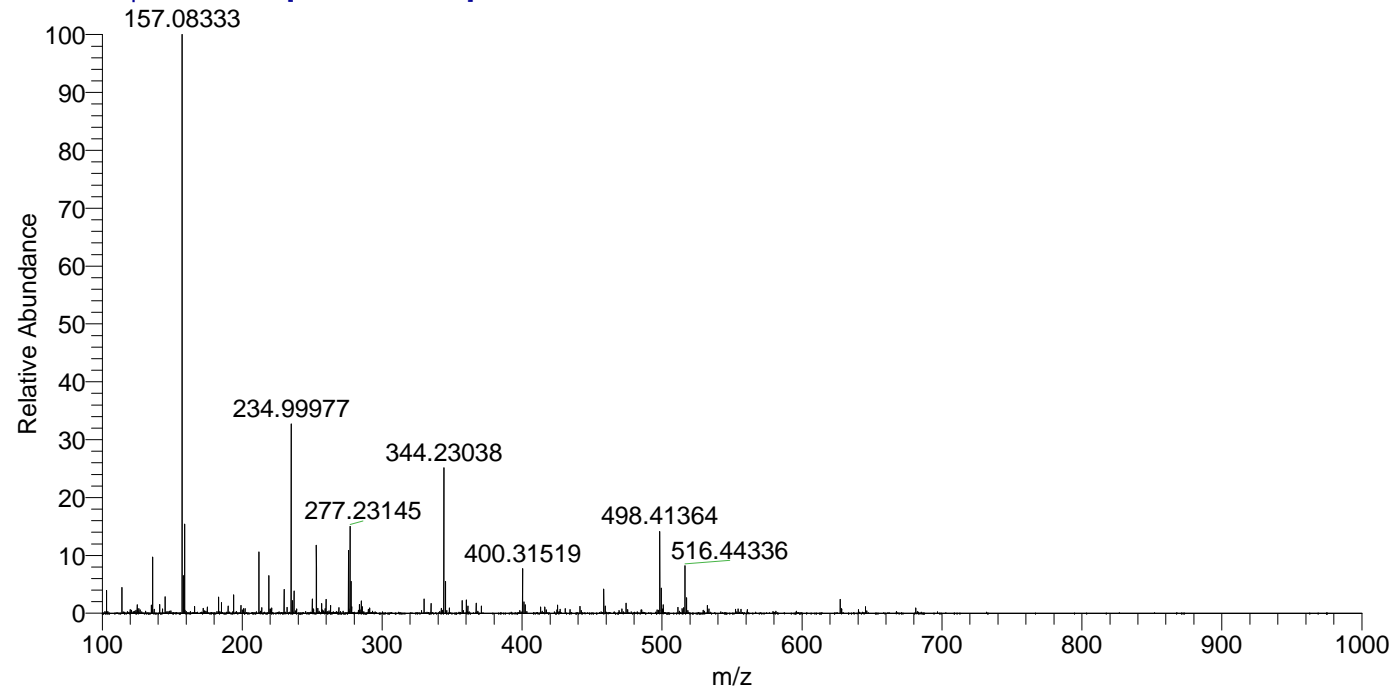
NL: 5.53E6
 Base Peak m/z=
 400.31438-400.31838 F:
 FTMS + p ESI Full ms
 [100.00-1500.00] MS
 Aperta_HDX



NL: 6.68E4
 Base Peak m/z=
 201.16423-201.16625 F:
 FTMS + p ESI Full ms
 [100.00-1500.00] MS
 Aperta_HDX

Aperta_HDX #1091 RT: 6.61 AV: 1 NL: 2.74E7

T: FTMS + p ESI Full ms [100.00-1500.00]



Aperta_HDX #1091 RT: 6.61 AV: 1 NL: 2.12E6

T: FTMS + p ESI Full ms [100.00-1500.00]

