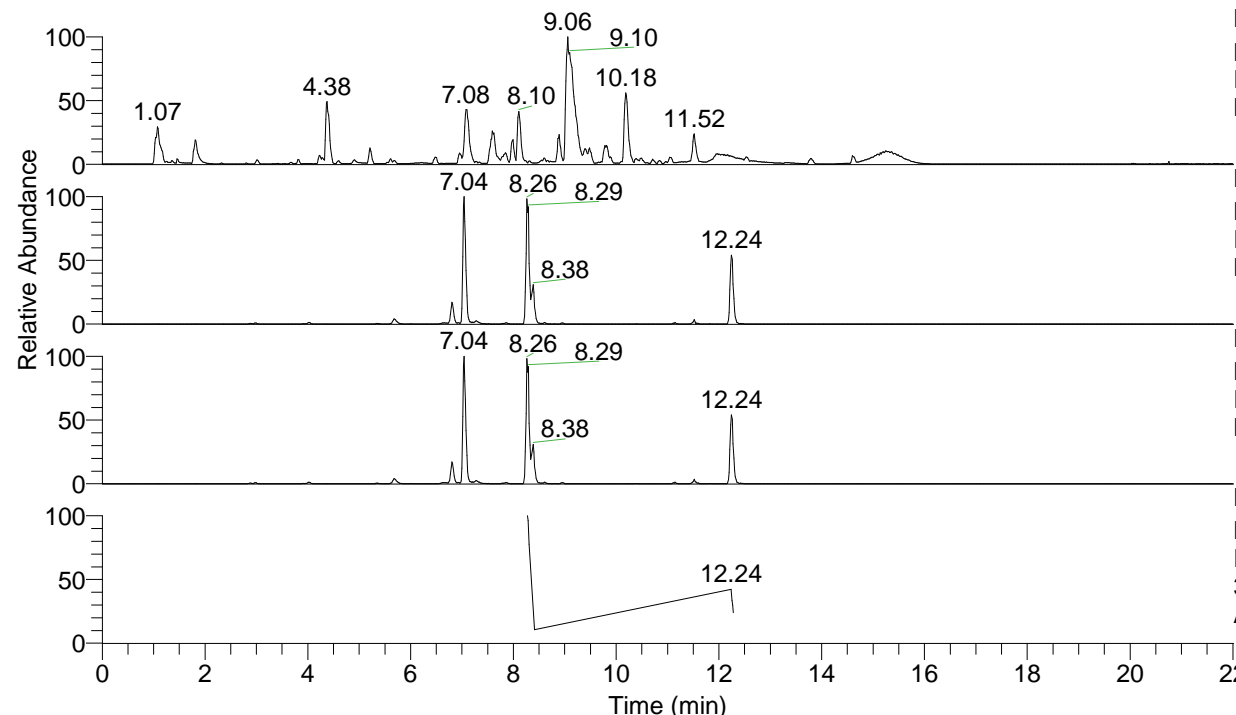


RT: 0.00 - 22.01



NL: 1.54E8
 Base Peak m/z= 100.00000-1500.00000 F:
 FTMS + p ESI Full ms [100.00-1500.00]
 MS Aperta19

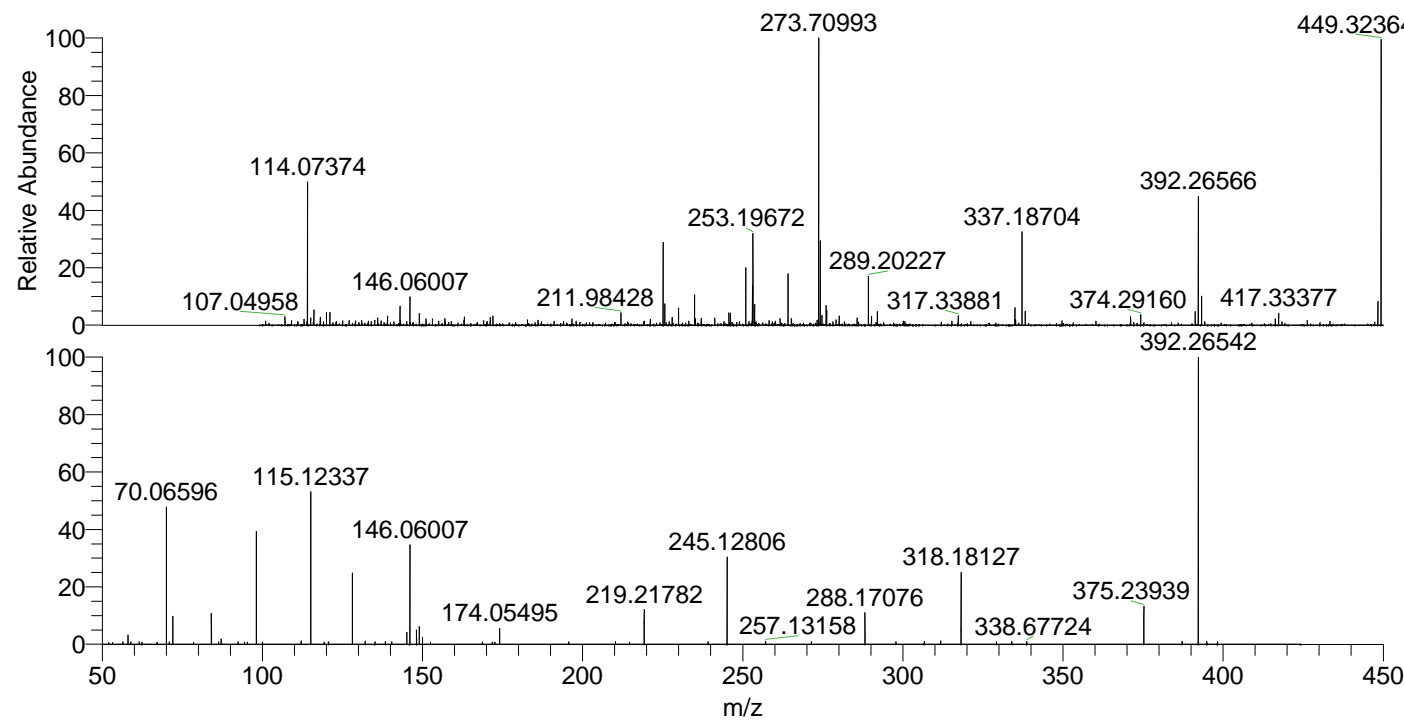
NL: 1.44E6
 Base Peak m/z= 392.26420-392.26812 F:
 FTMS + p ESI Full ms [100.00-1500.00]
 MS Aperta19

NL: 1.44E6
 Base Peak m/z= 392.26370-392.26762 F:
 FTMS + p ESI Full ms [100.00-1500.00]
 MS Aperta19

NL: 1.68E5
 Base Peak m/z= 50.00000-1500.00000 F:
 FTMS + p ESI d Full ms2
 392.27@hcd35.00 [50.00-420.00] MS
 Aperta19

Aperta19#3347-3359 RT: 8.27-8.30 AV:
 F: FTMS + p ESI d Full ms2 392.27 ...
 m/z= 50.00000-1000.00000

m/z	Intensity	Relative
56.46100	1233.5	0.83
58.06607	4651.1	3.12
61.53215	1299.7	0.87
70.06596	70484.3	47.32
70.98355	1143.8	0.77
72.08165	14609.3	9.81
84.08155	15775.8	10.59
86.31793	1202.2	0.81
87.09256	2759.8	1.85
92.38867	1173.3	0.79
94.39698	1094.7	0.73
95.29702	1160.4	0.78
95.36484	1148.8	0.77
98.09697	57546.1	38.63
112.11240	1787.6	1.20
115.12337	78176.8	52.48
119.27675	1127.4	0.76
120.66522	1243.7	0.83
128.10716	37165.0	24.95
132.15053	1533.3	1.03
135.16474	1193.6	0.80
138.44770	1388.0	0.93
140.42317	1179.5	0.79
145.13375	6089.9	4.09
146.06007	50752.4	34.07
148.14479	7260.8	4.87
149.02385	9240.6	6.20
150.02717	3505.2	2.35
152.51122	1120.2	0.75
168.68832	1134.9	0.76
171.82226	1142.1	0.77
172.61305	1150.8	0.77
174.05495	8174.6	5.49
195.66337	1238.4	0.83
210.28225	1435.3	0.96
214.67635	1125.7	0.76
219.21782	18280.1	12.27
239.20231	1322.1	0.89
245.12806	44535.5	29.90
257.13158	1549.9	1.04
271.44637	1333.5	0.90
288.17076	16000.1	10.74
297.86293	1273.6	0.86
306.68552	1454.7	0.98
311.79890	1688.9	1.13
318.18127	36676.6	24.62
329.23643	1287.4	0.86
334.02628	1332.3	0.89
338.67724	1421.0	0.95
375.23939	19483.6	13.08
387.21845	1515.1	1.02
392.26542	148959.6	100.00
392.31375	2117.2	1.42
394.90882	1395.5	0.94
398.24325	1288.6	0.87



NL: 3.00E6
 Aperta19#3343 RT: 8.26
 AV: 1 T: FTMS + p ESI
 Full lock ms
 [100.00-1500.00]

NL: 1.46E5
 Aperta19#3334-3369
 RT: 8.27-8.30 AV: 3 F:
 FTMS + p ESI d Full ms2
 392.27@hcd35.00
 [50.00-420.00]