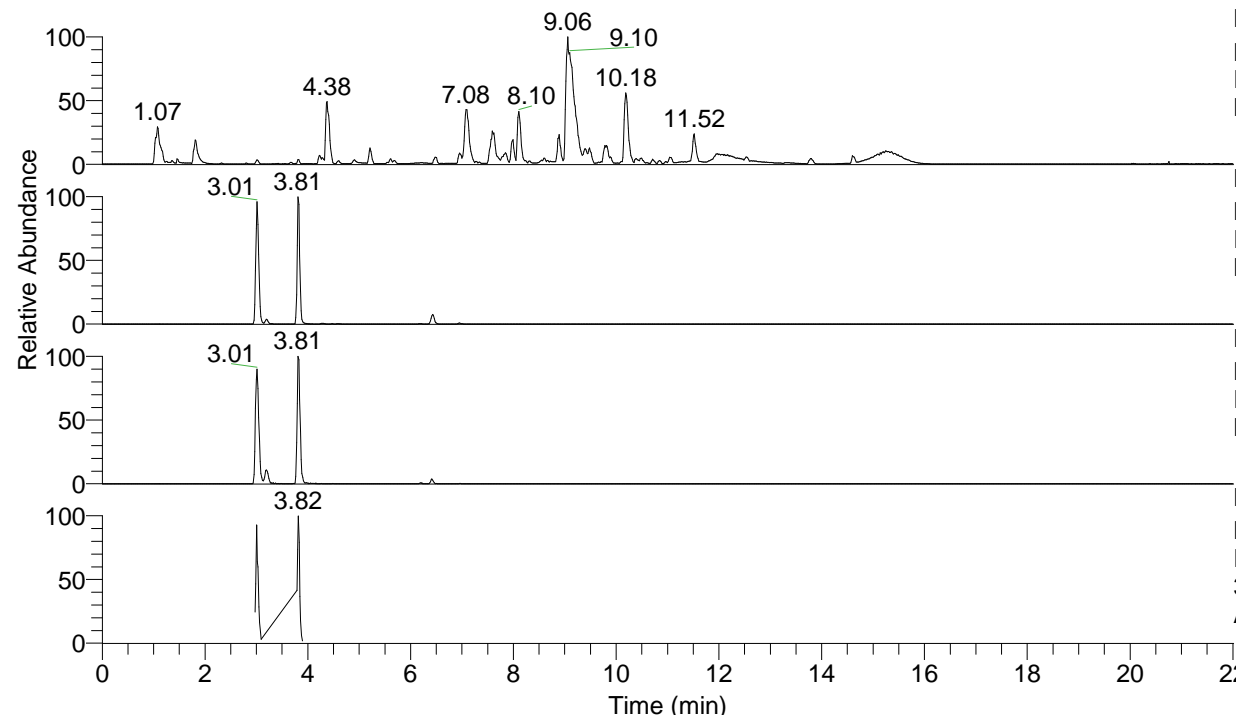


RT: 0.00 - 22.01



NL: 1.54E8
 Base Peak m/z= 100.00000-1500.00000 F:
 FTMS + p ESI Full ms [100.00-1500.00]
 MS Aperta19

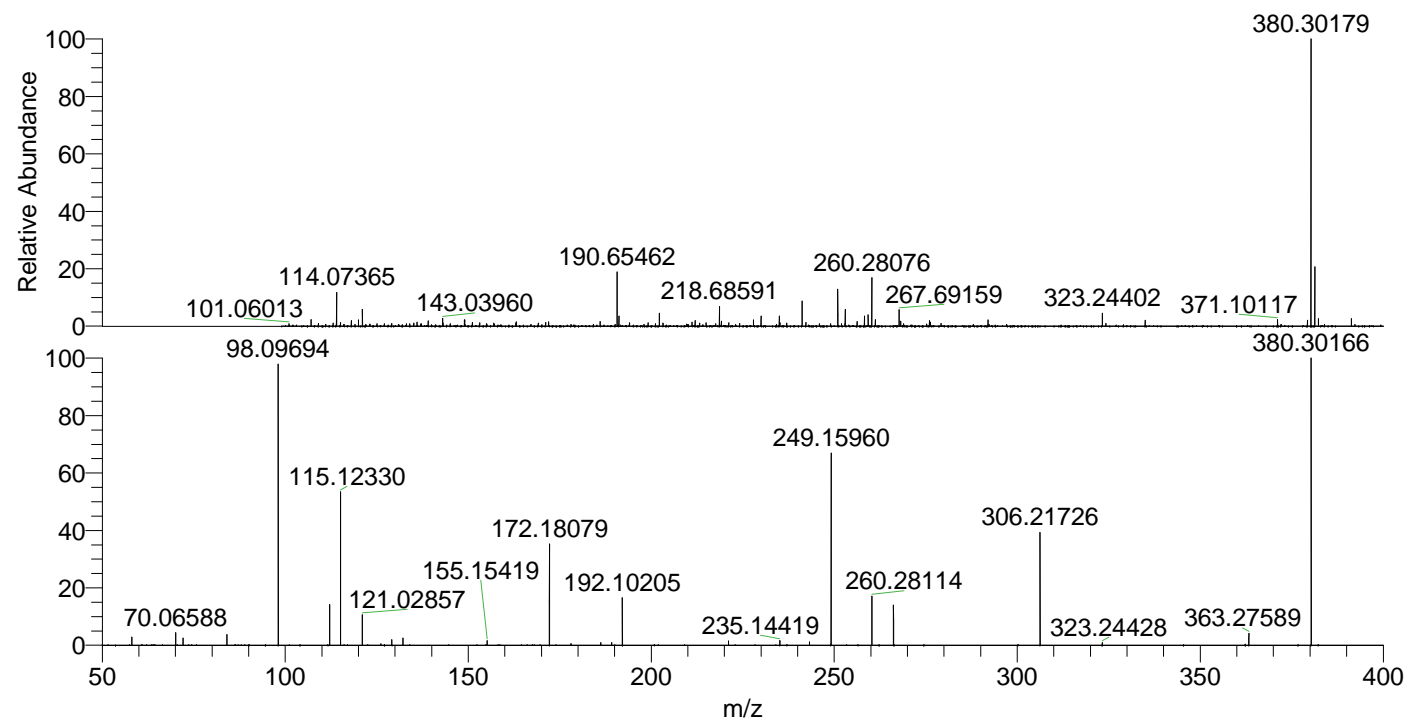
NL: 5.93E6
 Base Peak m/z= 380.30065-380.30445 F:
 FTMS + p ESI Full ms [100.00-1500.00]
 MS Aperta19

NL: 1.13E6
 Base Peak m/z= 190.65424-190.65614 F:
 FTMS + p ESI Full ms [100.00-1500.00]
 MS Aperta19

NL: 8.32E5
 Base Peak m/z= 50.00000-1500.00000 F:
 FTMS + p ESI d Full ms2
 380.30@hcd35.00 [50.00-405.00] MS
 Aperta19

Aperta19#1534-1562 RT: 3.79-3.86 AV:
 F: FTMS + p ESI d Full ms2 380.30 ...
 m/z= 50.00000-1000.00000

m/z	Intensity	Relative
58.06596	12691.0	2.85
70.06589	19608.3	4.40
72.08148	10780.3	2.42
84.08147	15838.6	3.55
98.09694	436156.0	97.79
112.11246	62965.4	14.12
115.12330	238847.2	53.55
121.02858	46665.9	10.46
126.12778	3192.7	0.72
129.13877	8108.3	1.82
132.14955	11634.7	2.61
155.15419	6799.4	1.52
172.18079	157415.4	35.29
178.08677	2853.2	0.64
186.19680	4000.0	0.90
189.20781	3993.6	0.90
192.10207	73439.6	16.47
221.12820	6248.0	1.40
235.14419	7070.5	1.59
243.25429	5055.4	1.13
249.15961	299016.1	67.04
260.28118	76697.9	17.20
266.18622	62039.6	13.91
306.21724	177467.7	39.79
323.24428	3854.7	0.86
363.27589	17979.6	4.03
380.30167	446008.5	100.00



NL: 5.92E6
 Aperta19#1543 RT: 3.81
 AV: 1 T: FTMS + p ESI
 Full lock ms
 [100.00-1500.00]

NL: 5.06E5
 Aperta19#1532-1561
 RT: 3.79-3.85 AV: 5 F:
 FTMS + p ESI d Full ms2
 380.30@hcd35.00
 [50.00-405.00]