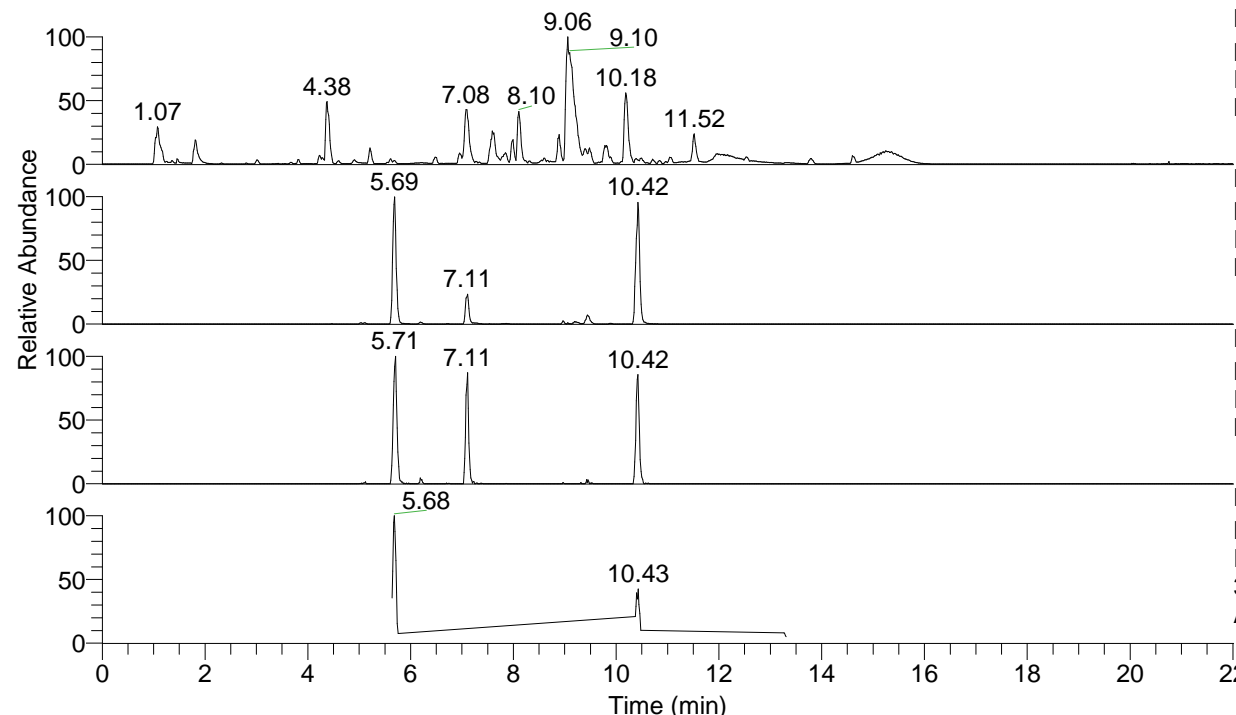


RT: 0.00 - 22.01



NL: 1.54E8
 Base Peak m/z= 100.00000-1500.00000 F:
 FTMS + p ESI Full ms [100.00-1500.00]
 MS Aperta19

NL: 4.89E6
 Base Peak m/z= 376.26937-376.27313 F:
 FTMS + p ESI Full ms [100.00-1500.00]
 MS Aperta19

NL: 3.31E5
 Base Peak m/z= 188.63860-188.64048 F:
 FTMS + p ESI Full ms [100.00-1500.00]
 MS Aperta19

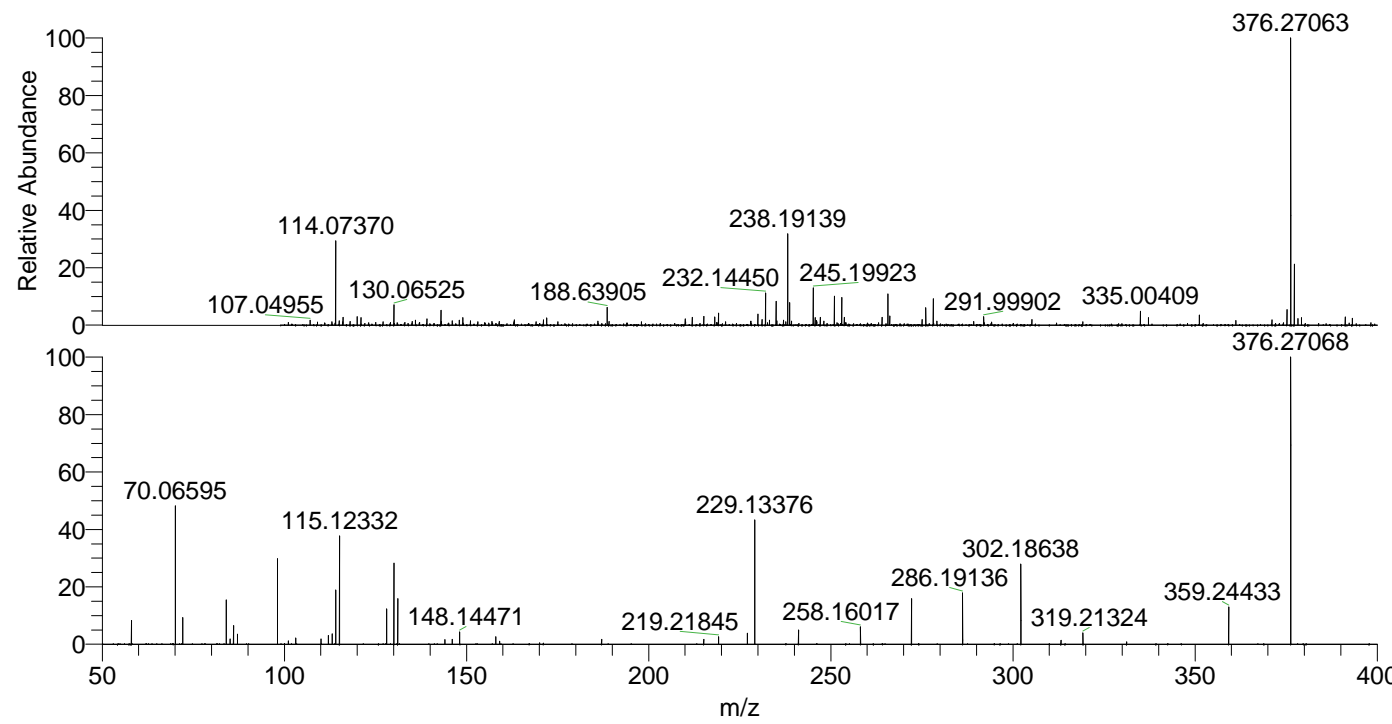
NL: 1.31E6
 Base Peak m/z= 50.00000-1500.00000 F:
 FTMS + p ESI d Full ms2
 376.23@hcd35.00 [50.00-400.00] MS
 Aperta19

Aperta19#4217-4251 RT: 10.37-10.46

F: FTMS + p ESI d Full ms2 376.23 ...

m/z= 50.00000-1000.00000

m/z	Intensity	Relative
58.06596	31102.9	8.09
70.06238	3405.5	0.89
70.06595	180377.5	46.89
72.08155	34804.2	9.05
84.08148	57641.3	14.98
85.07666	7097.7	1.85
86.06071	24139.4	6.28
87.09228	13063.0	3.40
98.09698	110807.1	28.80
101.10805	4583.6	1.19
103.08717	8241.6	2.14
110.09693	6784.7	1.76
112.11244	11598.5	3.02
113.10770	13341.1	3.47
114.09174	70182.1	18.24
115.12332	140816.2	36.61
128.10716	47131.3	12.25
130.06526	105433.3	27.41
130.07343	2999.0	0.78
131.11809	61466.4	15.98
144.08101	5829.4	1.52
146.06017	6226.4	1.62
148.14471	16170.4	4.20
158.06029	9922.8	2.58
159.09207	4086.5	1.06
187.08729	6370.7	1.66
215.11821	6627.1	1.72
219.21845	9760.6	2.54
227.11820	14416.1	3.75
229.13376	162786.6	42.32
241.13362	18865.5	4.90
258.16017	22395.4	5.82
272.17567	58835.0	15.29
286.19136	67981.1	17.67
302.18638	106177.5	27.60
313.20331	5305.4	1.38
319.21324	14716.9	3.83
331.21206	3210.0	0.83
359.24433	48771.7	12.68
376.27068	384690.9	100.00



NL: 4.59E6
 Aperta19#4237 RT:
 10.42 AV: 1 T: FTMS + p
 ESI Full lock ms
 [100.00-1500.00]

NL: 3.71E5
 Aperta19#4213-4258 RT:
 10.37-10.46 AV: 7 F:
 FTMS + p ESI d Full ms2
 376.23@hcd35.00
 [50.00-400.00]