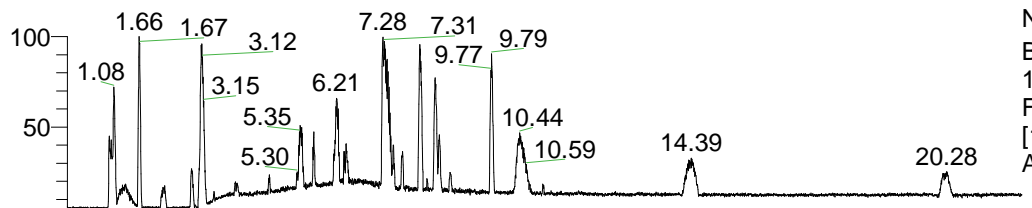


RT: 0.00 - 22.01



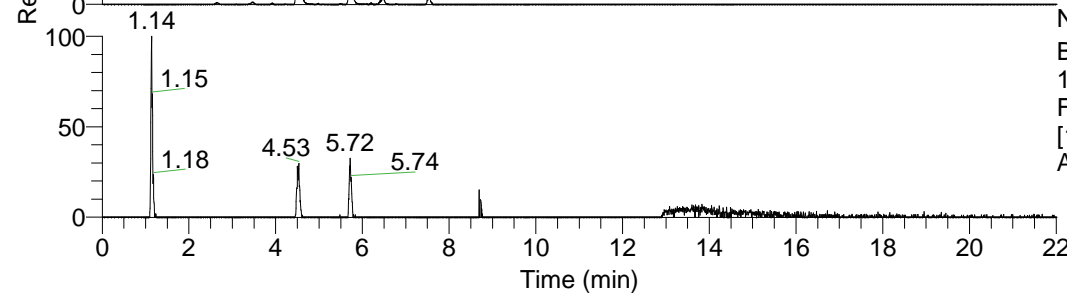
NL: 1.41E8  
 Base Peak m/z=  
 100.00000-1500.00000 F:  
 FTMS + p ESI Full ms  
 [100.00-1500.00] MS  
 Aperta\_HDX

Aperta\_HDX#735 RT: 4.52  
 T: FTMS + p ESI Full ms [100.00-1500.00]  
 m/z= 384.00000-385.00000

m/z	Intensity	Relative	Delta (ppm)	Composition
384.32034	9137128.0	100.00	-1.49	C <sub>20</sub> H <sub>26</sub> <sup>2</sup> H <sub>8</sub> O <sub>2</sub> N <sub>5</sub>
			2.54	C <sub>20</sub> H <sub>24</sub> <sup>2</sup> H <sub>9</sub> O <sub>2</sub> N <sub>5</sub>
			-5.52	C <sub>20</sub> H <sub>28</sub> <sup>2</sup> H <sub>7</sub> O <sub>2</sub> N <sub>5</sub>
			6.57	C <sub>20</sub> H <sub>22</sub> <sup>2</sup> H <sub>10</sub> O <sub>2</sub> N <sub>5</sub>
			-9.55	C <sub>20</sub> H <sub>30</sub> <sup>2</sup> H <sub>6</sub> O <sub>2</sub> N <sub>5</sub>

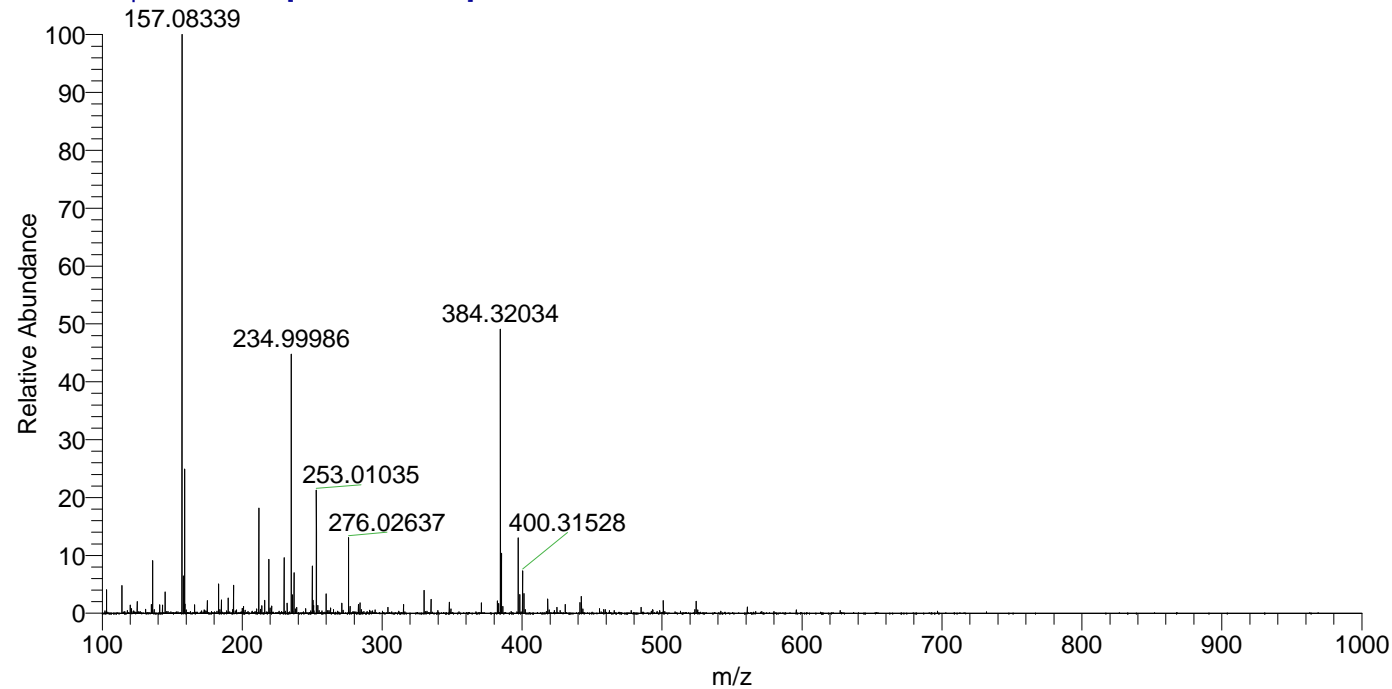


NL: 9.14E6  
 Base Peak m/z=  
 384.31955-384.32339 F:  
 FTMS + p ESI Full ms  
 [100.00-1500.00] MS  
 Aperta\_HDX



NL: 4.05E5  
 Base Peak m/z=  
 193.16681-193.16875 F:  
 FTMS + p ESI Full ms  
 [100.00-1500.00] MS  
 Aperta\_HDX

Aperta\_HDX #735 RT: 4.52 AV: 1 NL: 1.86E7  
 T: FTMS + p ESI Full ms [100.00-1500.00]



Aperta\_HDX #735 RT: 4.52 AV: 1 NL: 9.11E6  
 T: FTMS + p ESI Full ms [100.00-1500.00]

