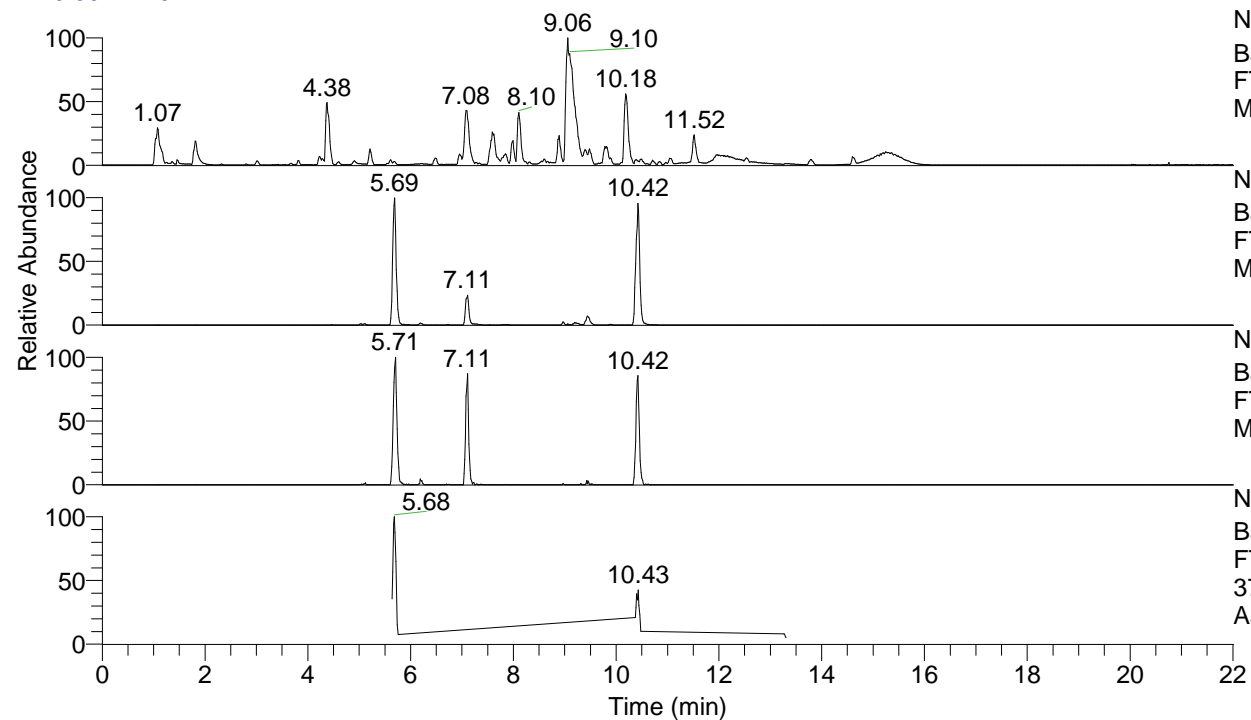


RT: 0.00 - 22.01



NL: 1.54E8
 Base Peak m/z= 100.00000-1500.00000 F:
 FTMS + p ESI Full ms [100.00-1500.00]
 MS Aperta19

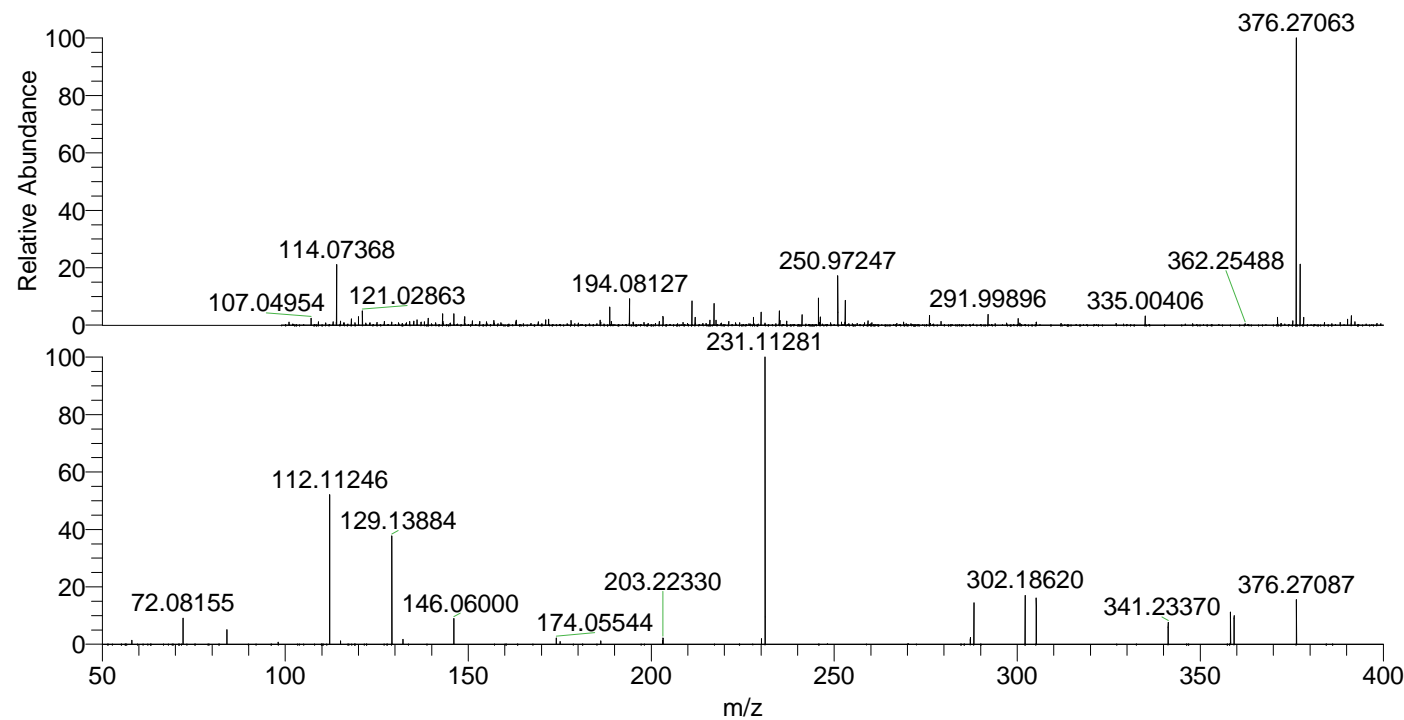
NL: 4.89E6
 Base Peak m/z= 376.26937-376.27313 F:
 FTMS + p ESI Full ms [100.00-1500.00]
 MS Aperta19

NL: 3.31E5
 Base Peak m/z= 188.63860-188.64048 F:
 FTMS + p ESI Full ms [100.00-1500.00]
 MS Aperta19

NL: 1.31E6
 Base Peak m/z= 50.00000-1500.00000 F:
 FTMS + p ESI d Full ms2
 376.23@hcd35.00 [50.00-400.00] MS
 Aperta19

Aperta19#2279-2318 RT: 5.64-5.74 AV:
 F: FTMS + p ESI d Full ms2 376.23 ...
 m/z= 50.00000-1000.00000

m/z	Intensity	Relative
58.06596	9988.2	1.32
72.08155	68408.6	9.07
84.08150	37848.6	5.02
98.09689	5550.9	0.74
112.11246	390781.8	51.81
115.12335	8820.5	1.17
129.13884	279147.3	37.01
132.14945	12736.9	1.69
146.06000	66623.0	8.83
174.05544	16477.3	2.18
175.08707	7293.8	0.97
186.19649	8934.0	1.18
203.08167	10436.7	1.38
203.22330	16350.4	2.17
230.12886	14543.9	1.93
231.11281	754229.0	100.00
287.18703	18027.3	2.39
288.17052	106479.8	14.12
302.18620	128485.6	17.04
305.19712	118927.5	15.77
341.23370	56412.0	7.48
358.25999	82965.3	11.00
359.24432	74556.4	9.89
376.27087	119037.4	15.78



NL: 4.71E6
 Aperta19#2299 RT: 5.69
 AV: 1 T: FTMS + p ESI
 Full lock ms
 [100.00-1500.00]

NL: 7.40E5
 Aperta19#2277-2318
 RT: 5.64-5.74 AV: 8 F:
 FTMS + p ESI d Full ms2
 376.23@hcd35.00
 [50.00-400.00]