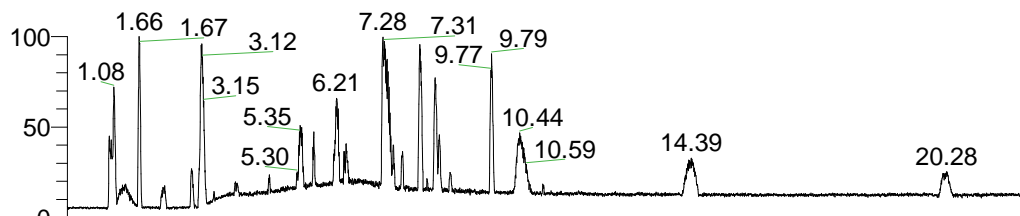


RT: 0.00 - 22.01



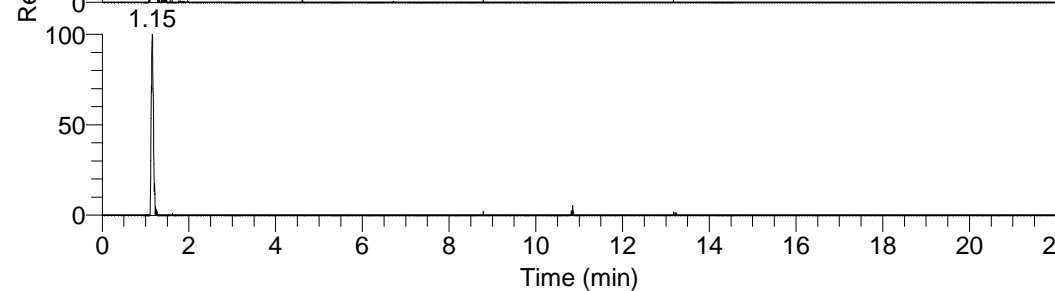
NL: 1.41E8
 Base Peak m/z=
 100.00000-1500.00000 F:
 FTMS + p ESI Full ms
 [100.00-1500.00] MS
 Aperta_HDX

Aperta_HDX#178 RT: 1.15
 T: FTMS + p ESI Full ms [100.00-1500.00]
 m/z= 383.00000-384.00000

m/z	Intensity	Relative	Delta (ppm)	Composition
383.39377	312424.1	100.00	-1.69	C ₁₈ H ₃₅ ² H ₈ O ₂ N ₆
			2.35	C ₁₈ H ₃₃ ² H ₉ O ₂ N ₆
			-5.73	C ₁₈ H ₃₇ ² H ₇ O ₂ N ₆
			6.39	C ₁₈ H ₃₁ ² H ₁₀ O ₂ N ₆
			-9.76	C ₁₈ H ₃₉ ² H ₆ O ₂ N ₆



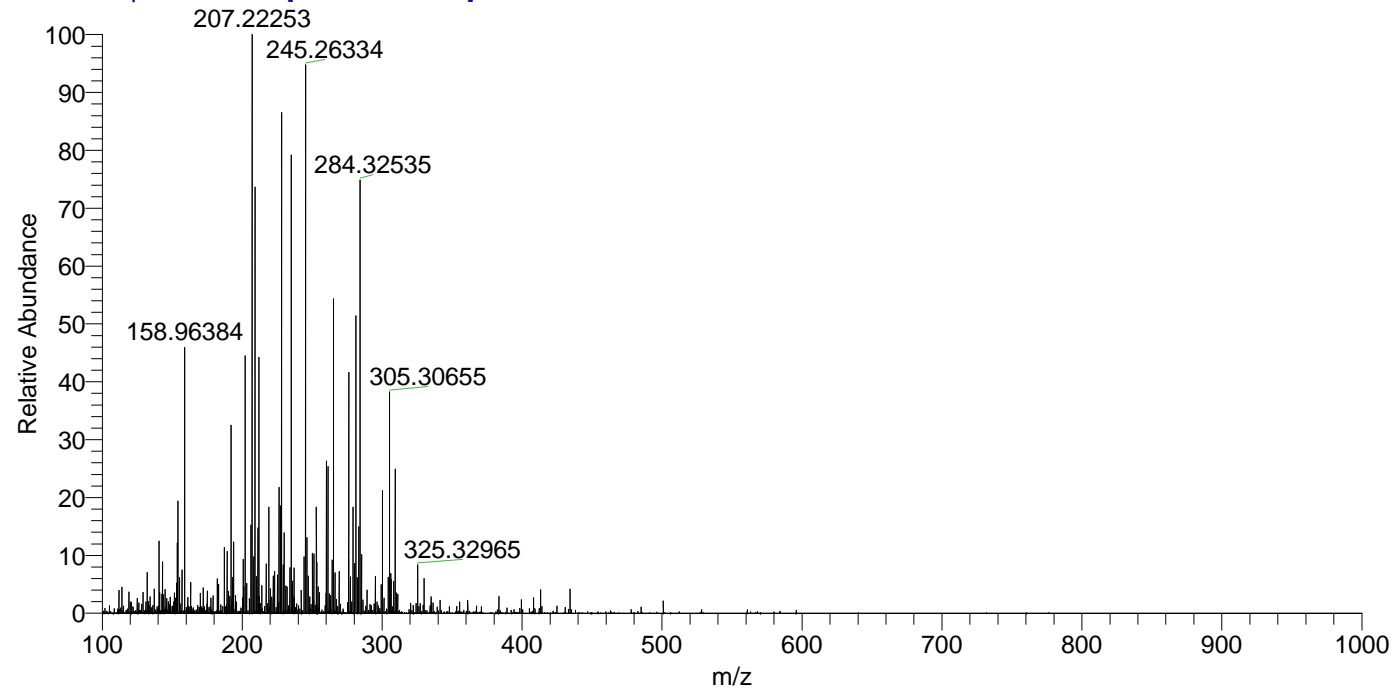
NL: 5.24E5
 Base Peak m/z=
 383.39305-383.39689 F:
 FTMS + p ESI Full ms
 [100.00-1500.00] MS
 Aperta_HDX



NL: 2.81E5
 Base Peak m/z=
 192.70357-192.70549 F:
 FTMS + p ESI Full ms
 [100.00-1500.00] MS
 Aperta_HDX

Aperta_HDX #178 RT: 1.15 AV: 1 NL: 1.02E7

T: FTMS + p ESI Full ms [100.00-1500.00]



Aperta_HDX #178 RT: 1.15 AV: 1 NL: 2.98E5

T: FTMS + p ESI Full ms [100.00-1500.00]

