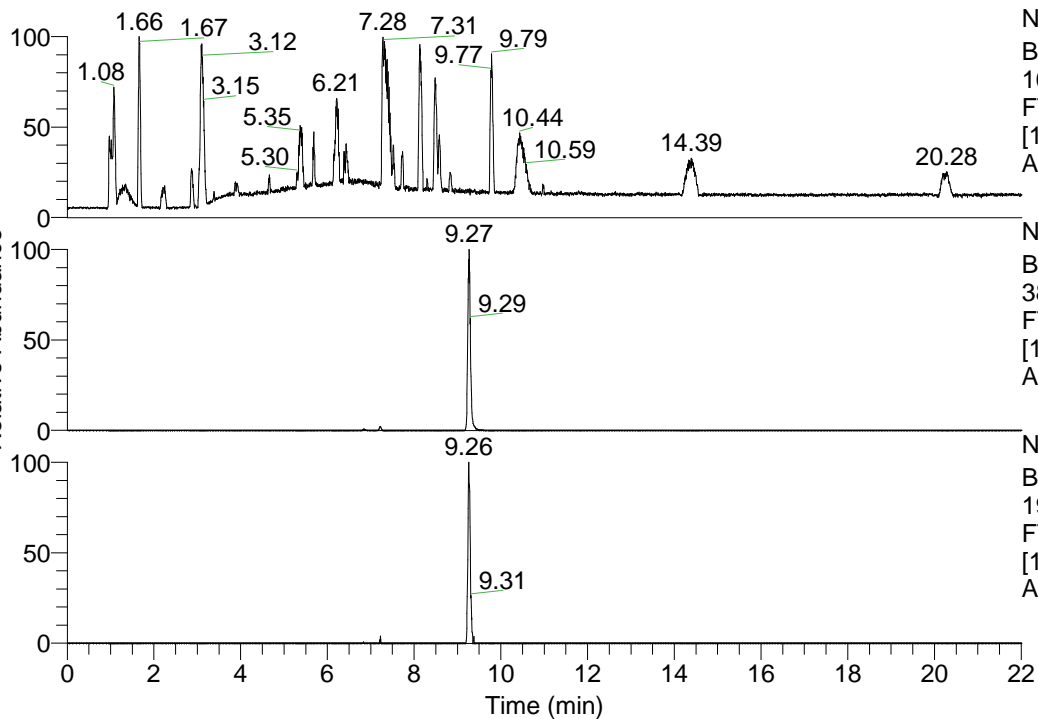


RT: 0.00 - 22.01



NL: 1.41E8
 Base Peak m/z=
 100.00000-1500.00000 F:
 FTMS + p ESI Full ms
 [100.00-1500.00] MS
 Aperta_HDX

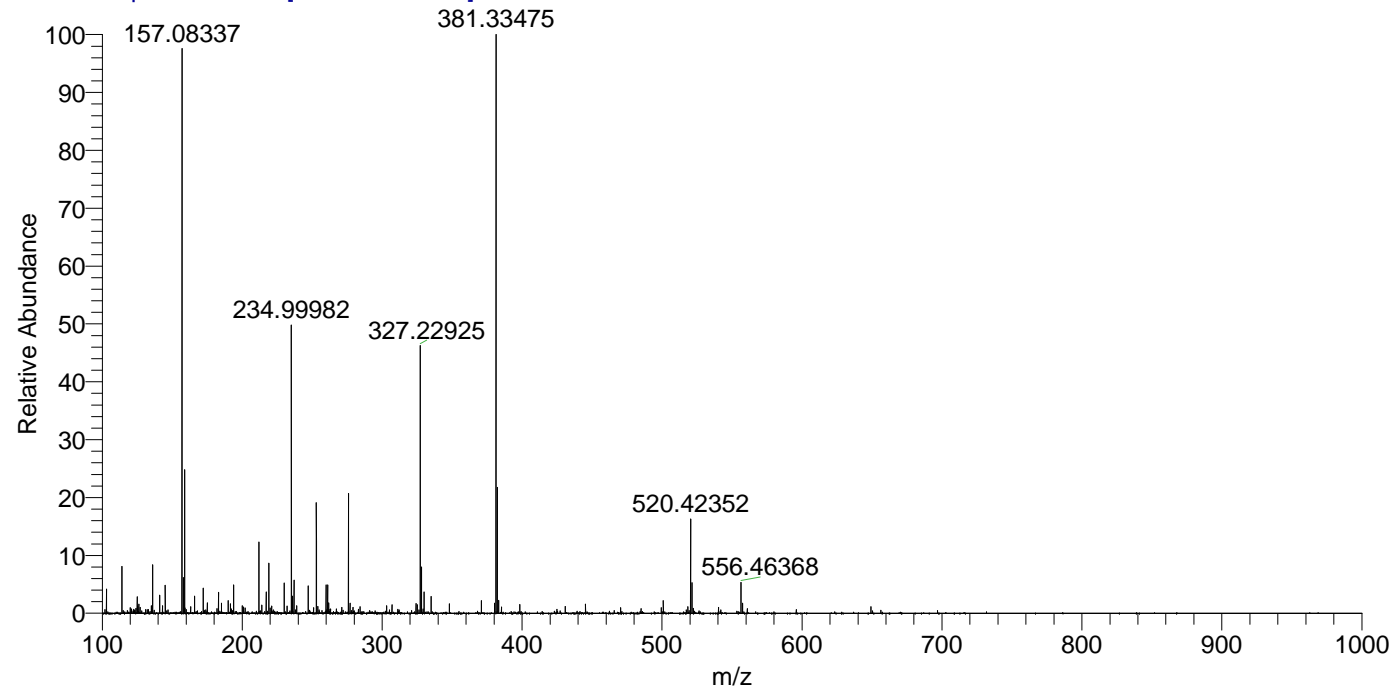
NL: 2.08E7
 Base Peak m/z=
 381.33401-381.33783 F:
 FTMS + p ESI Full ms
 [100.00-1500.00] MS
 Aperta_HDX

NL: 4.09E5
 Base Peak m/z=
 191.67405-191.67597 F:
 FTMS + p ESI Full ms
 [100.00-1500.00] MS
 Aperta_HDX

Aperta_HDX#1550 RT: 9.27
 T: FTMS + p ESI Full ms [100.00-1500.00]
 m/z= 381.00000-382.00000

m/z	Intensity	Relative	Delta (ppm)	Composition
381.33475	20836516.0	100.00	-1.64	C ₂₁ H ₂₉ ² H ₇ O _N ₅
			2.42	C ₂₁ H ₂₇ ² H ₈ O _N ₅
			-5.70	C ₂₁ H ₃₁ ² H ₆ O _N ₅
			6.48	C ₂₁ H ₂₅ ² H ₉ O _N ₅
			-9.77	C ₂₁ H ₃₃ ² H ₅ O _N ₅

Aperta_HDX #1550 RT: 9.27 AV: 1 NL: 2.06E7
 T: FTMS + p ESI Full ms [100.00-1500.00]



Aperta_HDX #1550 RT: 9.27 AV: 1 NL: 2.06E7
 T: FTMS + p ESI Full ms [100.00-1500.00]

