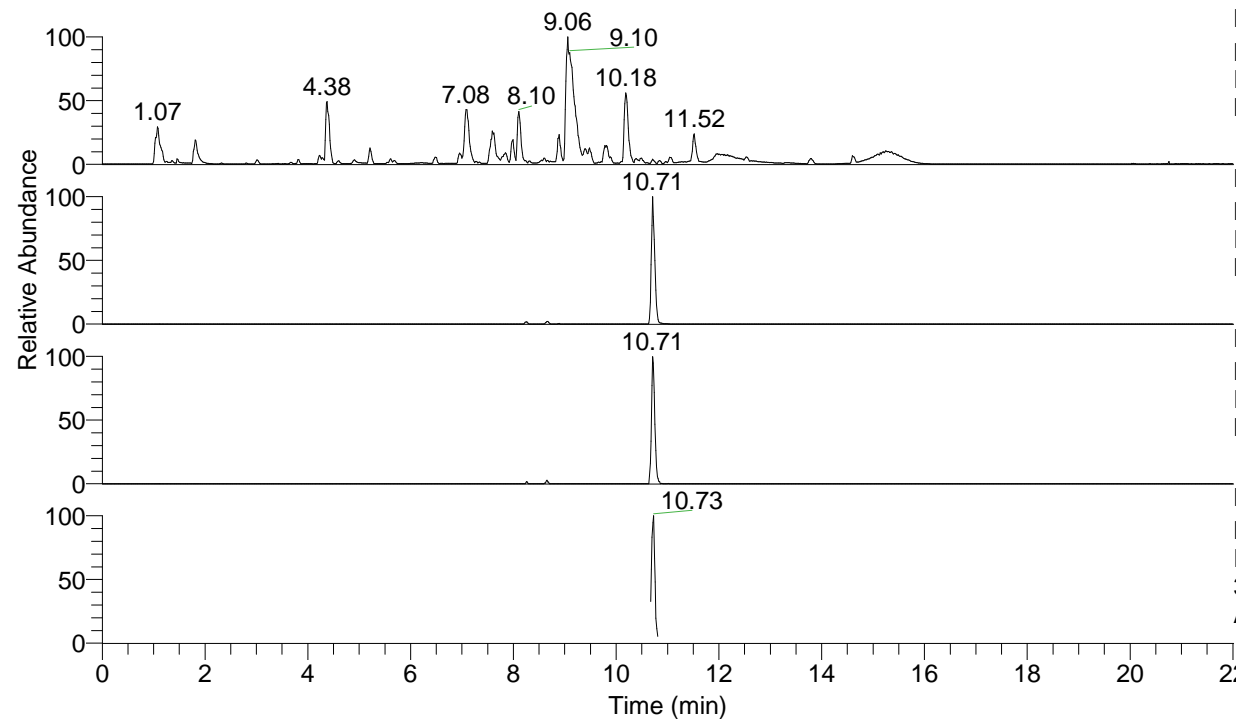


RT: 0.00 - 22.01



NL: 1.54E8
 Base Peak m/z= 100.00000-1500.00000 F:
 FTMS + p ESI Full ms [100.00-1500.00]
 MS Aperta19

NL: 6.22E6
 Base Peak m/z= 374.29012-374.29386 F:
 FTMS + p ESI Full ms [100.00-1500.00]
 MS Aperta19

NL: 4.14E5
 Base Peak m/z= 187.64897-187.65085 F:
 FTMS + p ESI Full ms [100.00-1500.00]
 MS Aperta19

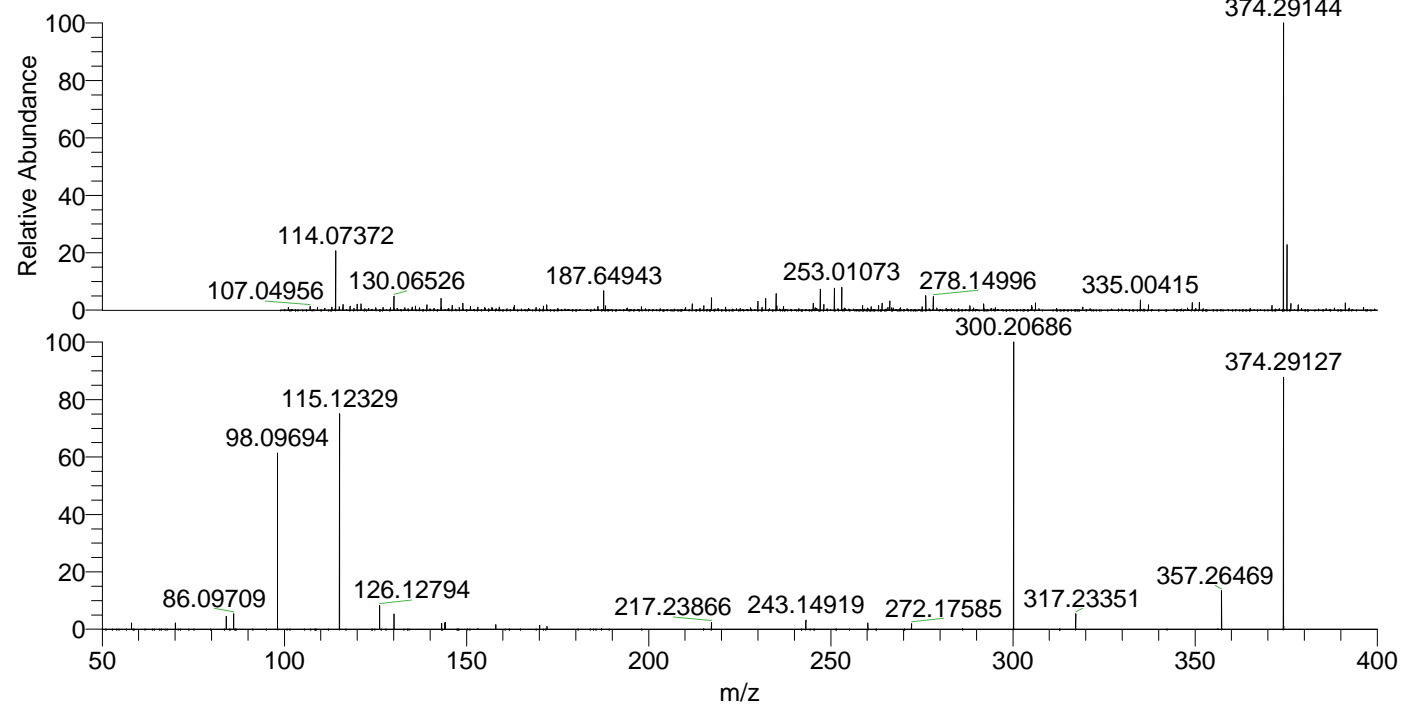
NL: 1.04E6
 Base Peak m/z= 50.00000-1500.00000 F:
 FTMS + p ESI d Full ms2
 374.29@hcd35.00 [50.00-400.00] MS
 Aperta19

Aaperta19#4336-4370 RT: 10.67-10.76

F: FTMS + p ESI d Full ms2 374.29 ...

m/z= 50.00000-1000.00000

m/z	Intensity	Relative
58.06593	14819.6	2.18
70.06570	15320.4	2.25
84.08139	31492.9	4.62
86.09709	36867.3	5.41
98.09694	416559.4	61.16
115.12329	512023.9	75.18
126.12794	57417.1	8.43
130.06526	36129.2	5.30
143.15429	14689.4	2.16
144.08094	14790.1	2.17
144.13831	16179.3	2.38
158.05996	11004.4	1.62
170.06003	4430.0	0.65
170.09637	9712.7	1.43
172.11174	6499.5	0.95
217.23866	16461.0	2.42
243.14919	22174.3	3.26
260.17554	14750.0	2.17
272.17585	13114.9	1.93
300.20686	681069.5	100.00
317.23351	38317.3	5.63
357.26469	91441.7	13.43
374.29127	617389.2	90.65



NL: 6.07E6
 Aaperta19#4351 RT:
 10.71 AV: 1 T: FTMS + p
 ESI Full lock ms
 [100.00-1500.00]

NL: 6.78E5
 Aaperta19#4335-4375 RT:
 10.67-10.76 AV: 7 F:
 FTMS + p ESI d Full ms2
 374.29@hcd35.00
 [50.00-400.00]