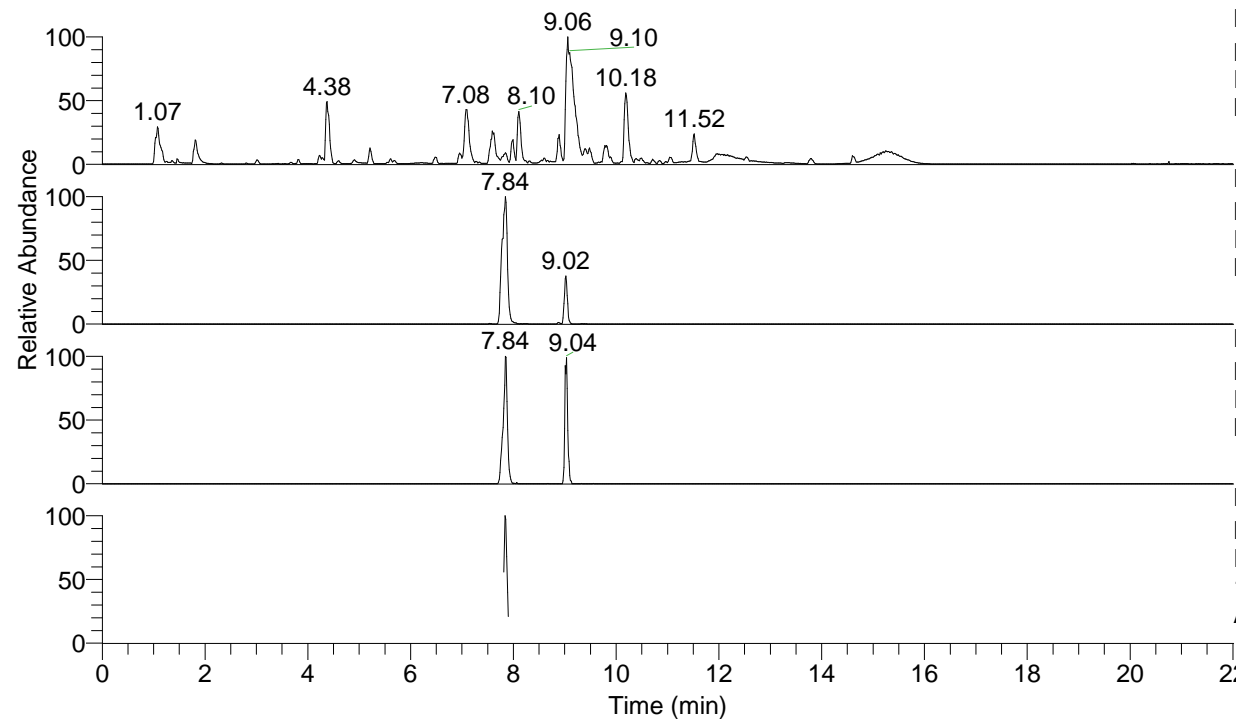


RT: 0.00 - 22.01



NL: 1.54E8  
 Base Peak m/z= 100.00000-1500.00000 F:  
 FTMS + p ESI Full ms [100.00-1500.00]  
 MS Aperta19

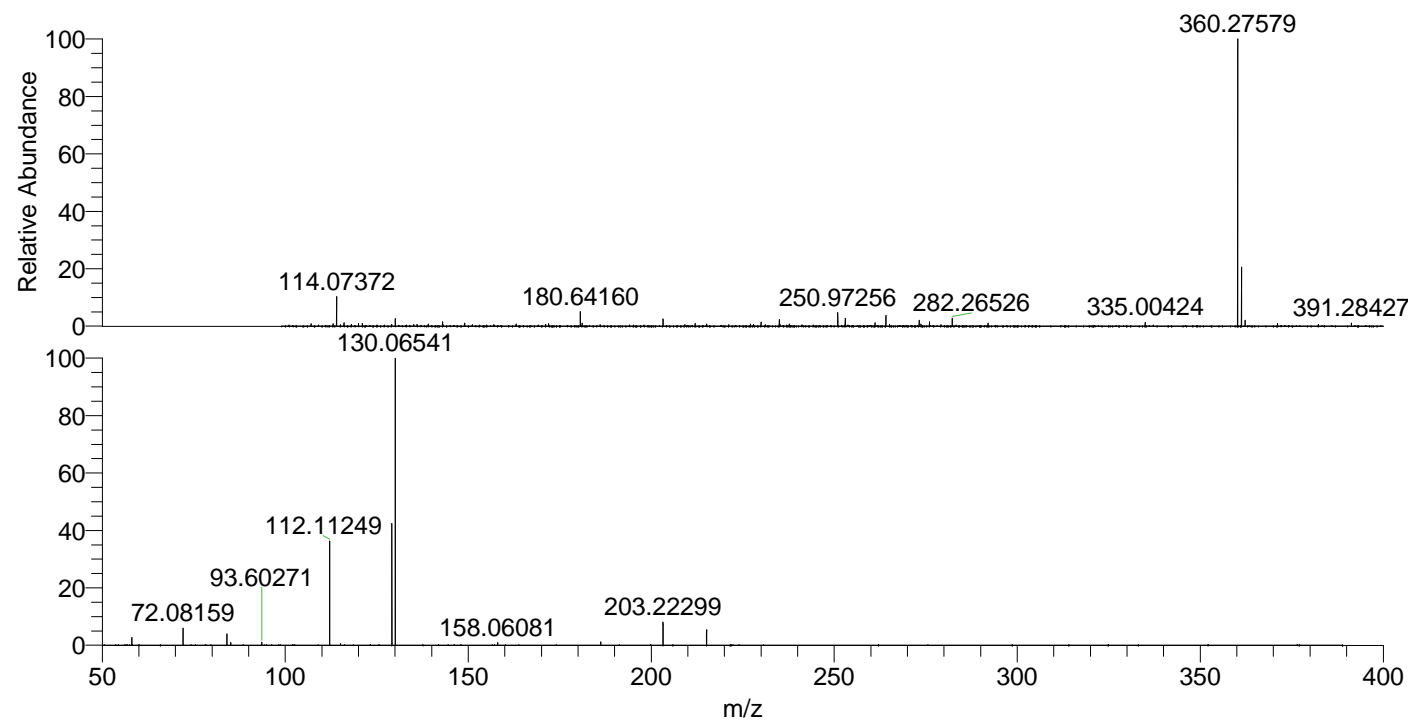
NL: 1.39E7  
 Base Peak m/z= 360.27454-360.27814 F:  
 FTMS + p ESI Full ms [100.00-1500.00]  
 MS Aperta19

NL: 7.51E5  
 Base Peak m/z= 180.64118-180.64298 F:  
 FTMS + p ESI Full ms [100.00-1500.00]  
 MS Aperta19

NL: 3.56E5  
 Base Peak m/z= 50.00000-1500.00000 F:  
 FTMS + p ESI d Full ms2  
 180.64@hcd35.00 [50.00-385.00] MS  
 Aperta19

Aperta19#3156-3186 RT: 7.81-7.89 AV:  
 F: FTMS + p ESI d Full ms2 180.64 ...  
 m/z= 50.00000-1000.00000

m/z	Intensity	Relative
58.06604	6715.3	2.74
72.08159	14711.1	6.01
84.08157	9592.2	3.92
85.08951	2395.2	0.98
93.60271	2675.4	1.09
112.11249	90031.5	36.77
115.12357	1490.1	0.61
129.13893	103830.0	42.41
130.06541	244838.6	100.00
158.06081	2317.3	0.95
186.19746	2822.2	1.15
203.22299	19907.8	8.13
215.11818	13200.2	5.39



NL: 1.39E7  
 Aperta19#3169 RT: 7.84  
 AV: 1 T: FTMS + p ESI  
 Full lock ms  
 [100.00-1500.00]

NL: 2.45E5  
 Aperta19#3153-3188  
 RT: 7.81-7.89 AV: 5 F:  
 FTMS + p ESI d Full ms2  
 180.64@hcd35.00  
 [50.00-385.00]