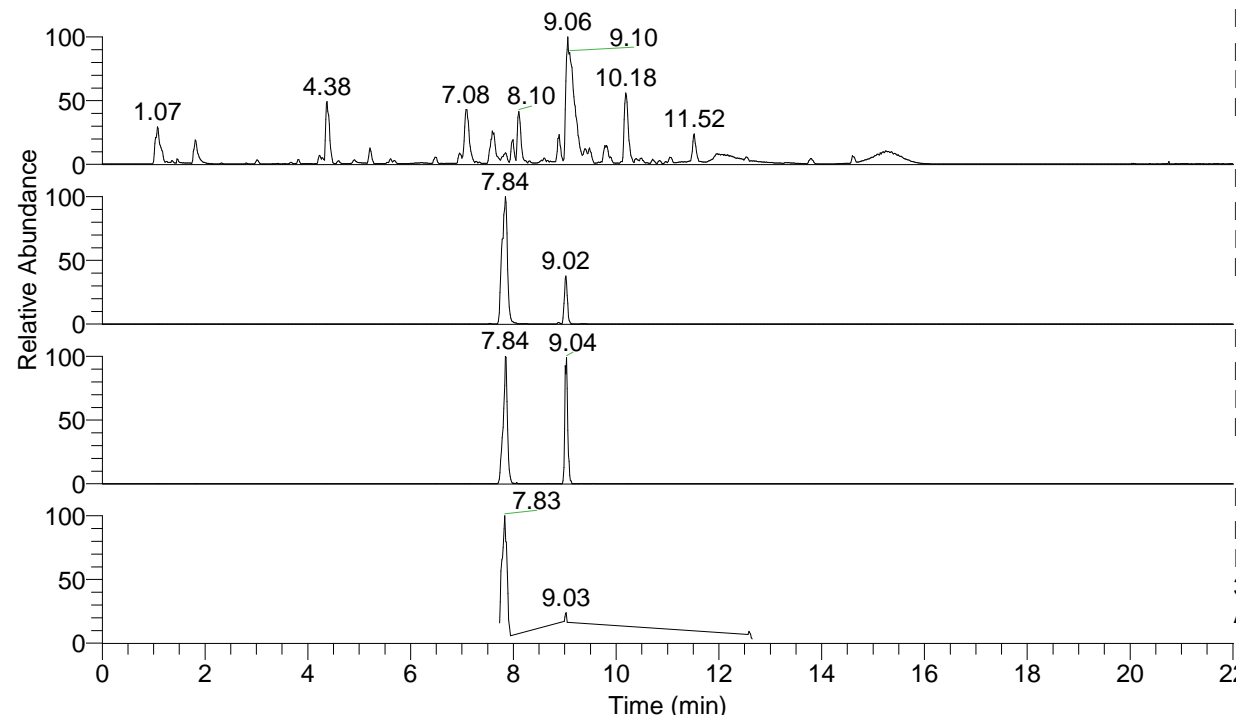


RT: 0.00 - 22.01



NL: 1.54E8
 Base Peak m/z= 100.00000-1500.00000 F:
 FTMS + p ESI Full ms [100.00-1500.00]
 MS Aperta19

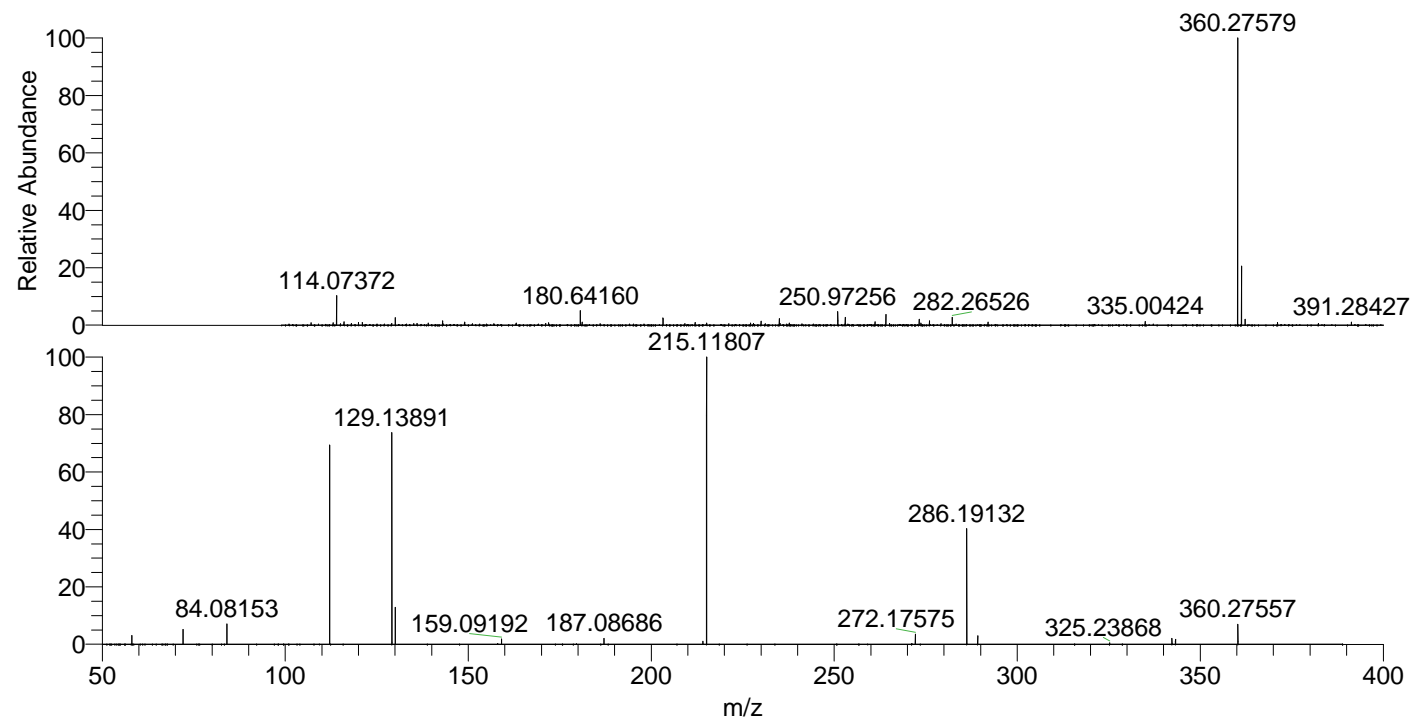
NL: 1.39E7
 Base Peak m/z= 360.27454-360.27814 F:
 FTMS + p ESI Full ms [100.00-1500.00]
 MS Aperta19

NL: 7.51E5
 Base Peak m/z= 180.64118-180.64298 F:
 FTMS + p ESI Full ms [100.00-1500.00]
 MS Aperta19

NL: 2.84E6
 Base Peak m/z= 50.00000-1500.00000 F:
 FTMS + p ESI d Full ms2
 360.24@hcd35.00 [50.00-385.00] MS
 Aperta19

Aaperta19#3158-3194 RT: 7.82-7.91 AV: 7
 F: FTMS + p ESI d Full ms2 360.24@h ...
 m/z= 50.00000-1000.00000

m/z	Intensity	Relative
58.06606	54466.9	3.08
72.08160	91943.5	5.19
84.08153	125615.6	7.10
112.11251	1237362.4	69.89
129.13891	1307537.5	73.86
130.06534	230542.5	13.02
159.09192	33679.3	1.90
187.08686	37697.6	2.13
214.13418	19105.5	1.08
215.11807	1770321.1	100.00
272.17575	62373.4	3.52
286.19132	720556.1	40.70
289.20220	53757.0	3.04
325.23868	9893.3	0.56
342.26458	37321.3	2.11
343.24973	31831.6	1.80
360.27557	123601.8	6.98



NL: 1.39E7
 Aaperta19#3169 RT: 7.84
 AV: 1 T: FTMS + p ESI
 Full lock ms
 [100.00-1500.00]

NL: 1.77E6
 Aaperta19#3158-3194
 RT: 7.82-7.91 AV: 7 F:
 FTMS + p ESI d Full ms2
 360.24@hcd35.00
 [50.00-385.00]