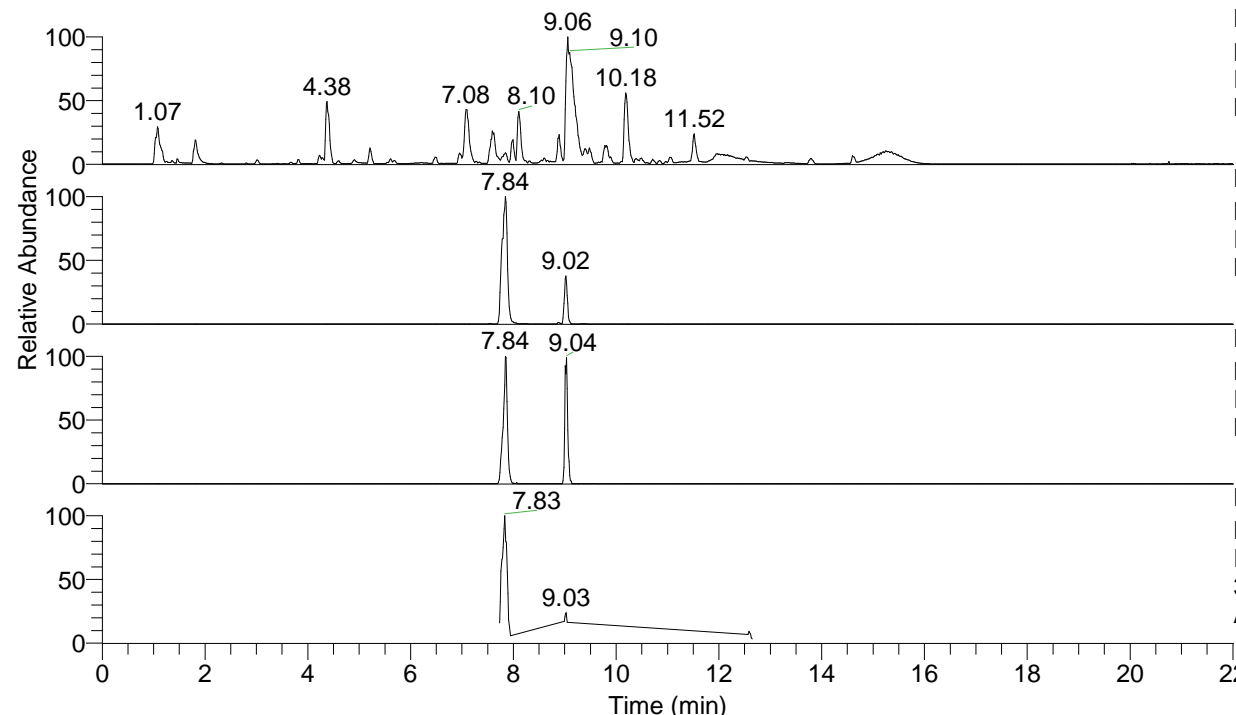


RT: 0.00 - 22.01



NL: 1.54E8
 Base Peak m/z= 100.00000-1500.00000 F:
 FTMS + p ESI Full ms [100.00-1500.00]
 MS Aperta19

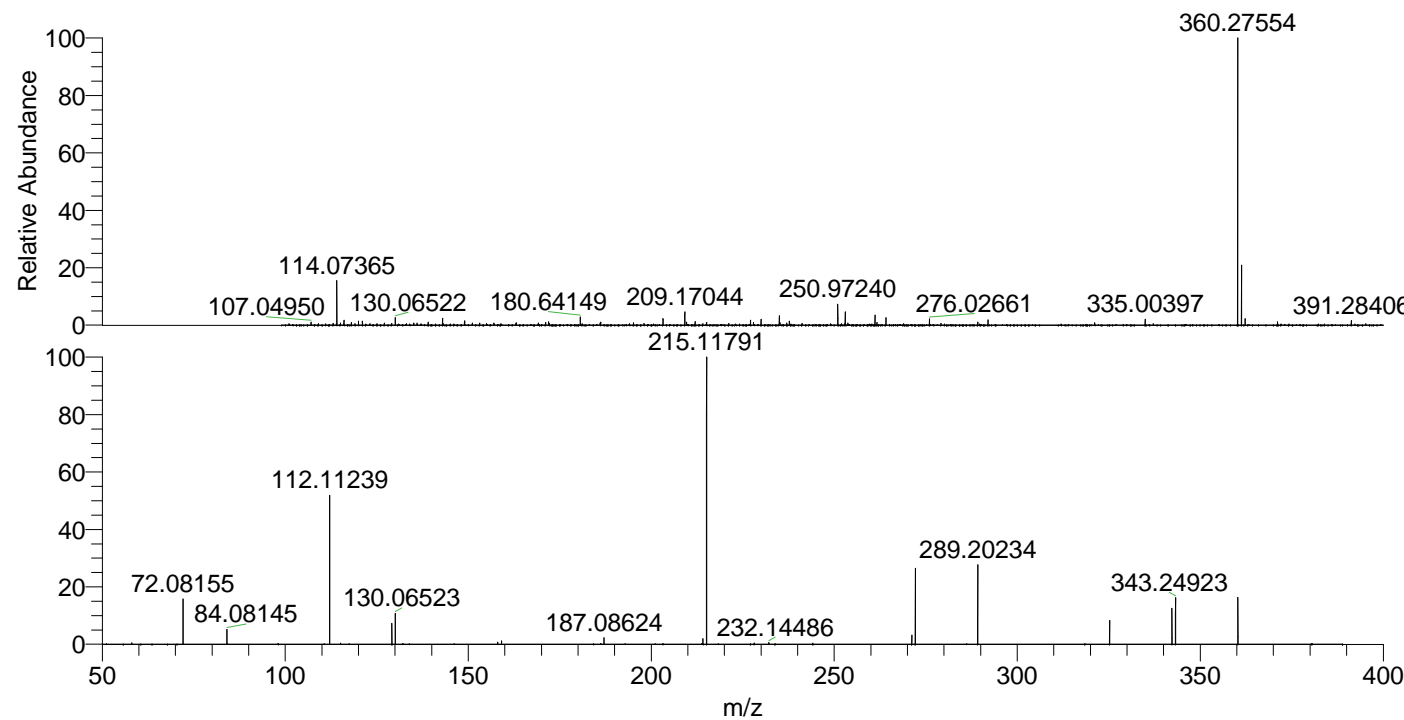
NL: 1.39E7
 Base Peak m/z= 360.27454-360.27814 F:
 FTMS + p ESI Full ms [100.00-1500.00]
 MS Aperta19

NL: 7.51E5
 Base Peak m/z= 180.64118-180.64298 F:
 FTMS + p ESI Full ms [100.00-1500.00]
 MS Aperta19

NL: 2.84E6
 Base Peak m/z= 50.00000-1500.00000 F:
 FTMS + p ESI d Full ms2
 360.24@hcd35.00 [50.00-385.00] MS
 Aperta19

Aperta19#3125-3135 RT: 7.73-7.76 AV:
 F: FTMS + p ESI d Full ms2 360.24 ...
 m/z= 50.00000-1000.00000

m/z	Intensity	Relative
72.08155	151626.9	15.90
84.08145	50206.6	5.26
112.11239	496380.9	52.05
129.13878	69936.1	7.33
130.06523	103932.7	10.90
158.06054	6567.0	0.69
159.09187	11690.3	1.23
187.08624	21857.3	2.29
214.13384	19061.9	2.00
215.11791	953654.6	100.00
232.14486	5431.8	0.57
271.19099	30433.4	3.19
272.17568	253489.2	26.58
289.20234	267987.2	28.10
325.23814	79967.8	8.39
342.26494	119299.9	12.51
343.24923	160816.3	16.86
360.27568	156213.6	16.38



NL: 9.29E6
 Aperta19#3145 RT: 7.78
 AV: 1 T: FTMS + p ESI
 Full lock ms
 [100.00-1500.00]

NL: 9.54E5
 Aperta19#3122-3135
 RT: 7.73-7.76 AV: 3 F:
 FTMS + p ESI d Full ms2
 360.24@hcd35.00
 [50.00-385.00]