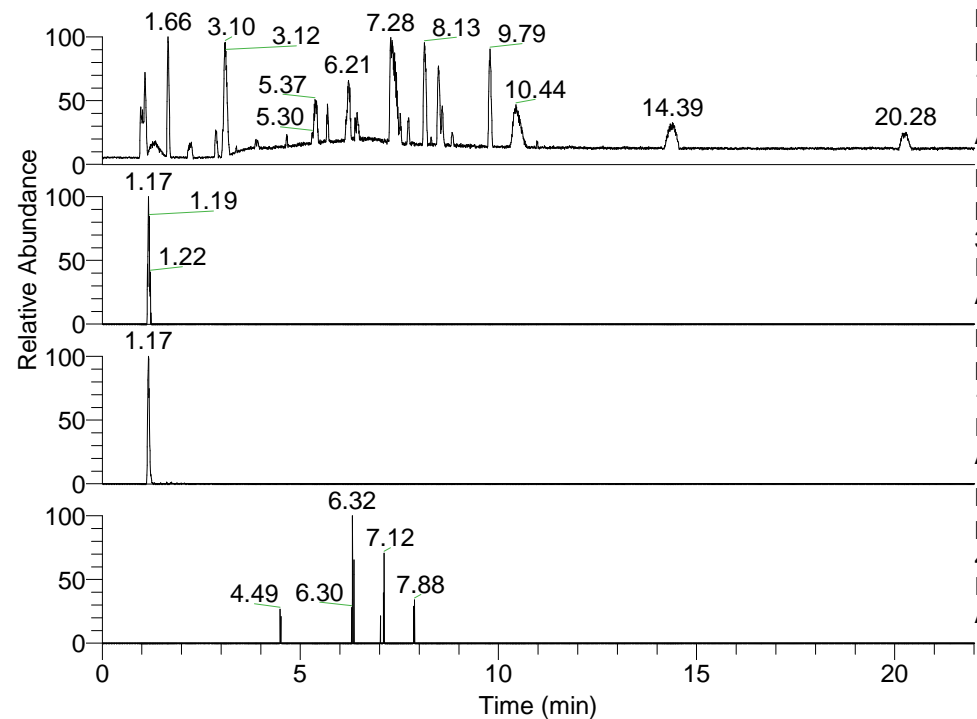


RT: 0.00 - 22.01



NL: 1.41E8
 Base Peak m/z=
 100.00000-1500.00000 F: FTMS + p
 ESI Full ms [100.00-1500.00] MS
 Aperta_HDX

NL: 1.20E5
 Base Peak m/z=
 362.37788-362.38150 F: FTMS + p
 ESI Full ms [100.00-1500.00] MS
 Aperta_HDX

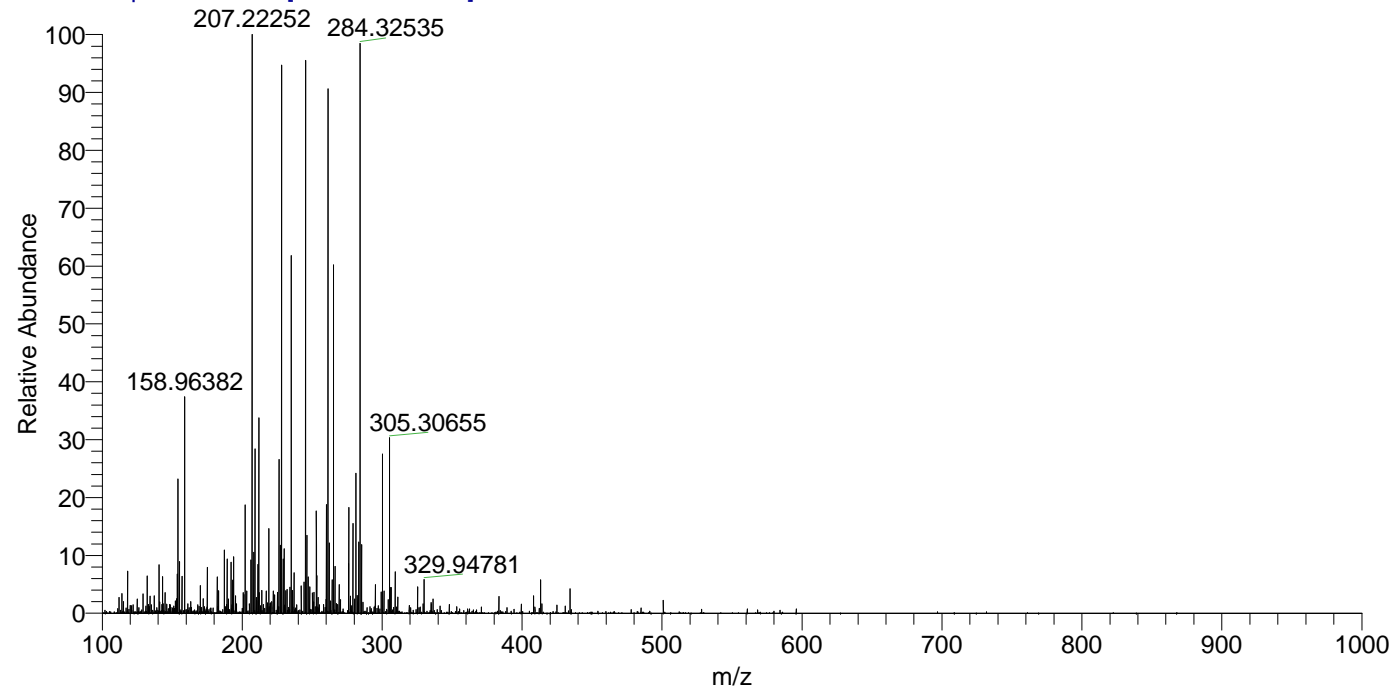
NL: 8.65E5
 Base Peak m/z=
 182.19599-182.19781 F: FTMS + p
 ESI Full ms [100.00-1500.00] MS
 Aperta_HDX

NL: 2.15E4
 Base Peak m/z=
 477.37644-477.38122 F: FTMS + p
 ESI Full ms [100.00-1500.00] MS
 Aperta_HDX

Aperta_HDX#182 RT: 1.17
 T: FTMS + p ESI Full ms [100.00-1500.00]
 m/z= 362.00000-363.00000

m/z	Intensity	Relative	Delta (ppm)	Composition
362.37833	95889.0	100.00	2.01	C ₁₉ H ₃₈ ² H ₅ ON ₅
			-2.26	C ₁₉ H ₄₀ ² H ₄ ON ₅
			6.29	C ₁₉ H ₃₆ ² H ₆ ON ₅
			-6.53	C ₁₉ H ₄₂ ² H ₃ ON ₅

Aperta_HDX #182 RT: 1.17 AV: 1 NL: 1.33E7
 T: FTMS + p ESI Full ms [100.00-1500.00]



Aperta_HDX #182 RT: 1.17 AV: 1 NL: 1.02E5
 T: FTMS + p ESI Full ms [100.00-1500.00]

