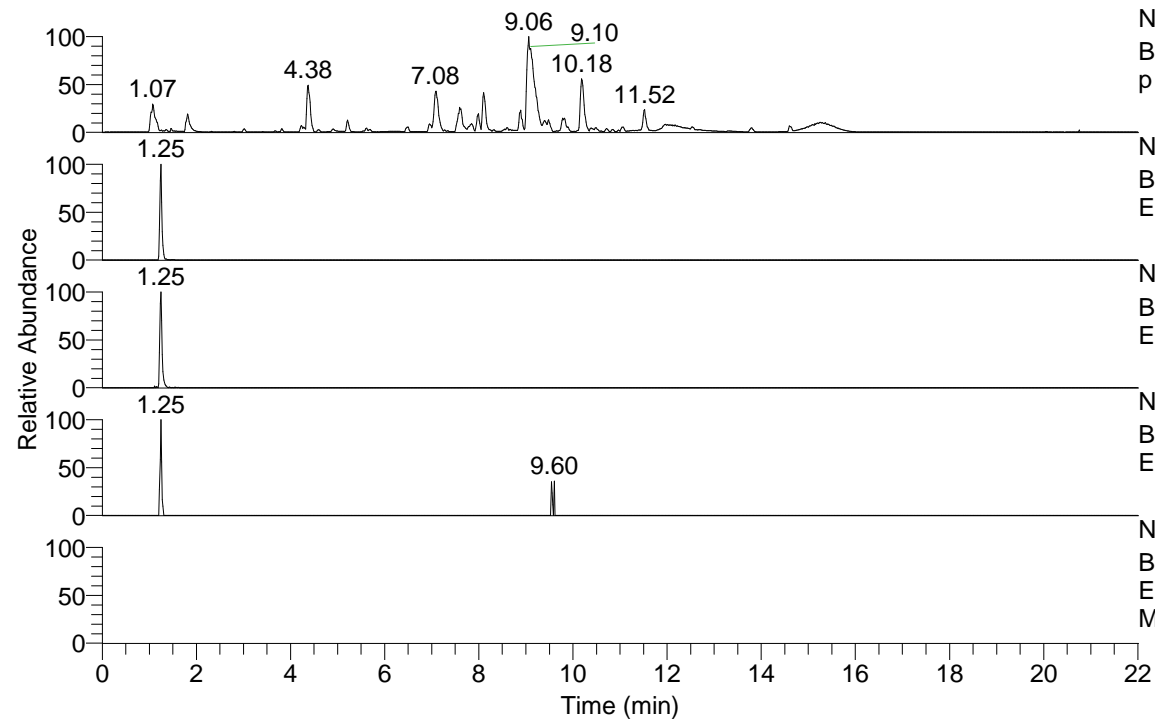


RT: 0.00 - 22.01



NL: 1.54E8
 Base Peak m/z= 100.00000-1500.00000 F: FTMS +
 p ESI Full ms [100.00-1500.00] MS Aperta19

NL: 1.38E6
 Base Peak m/z= 358.35280-358.35638 F: FTMS + p
 ESI Full ms [100.00-1500.00] MS Aperta19

NL: 6.24E5
 Base Peak m/z= 179.68031-179.68211 F: FTMS + p
 ESI Full ms [100.00-1500.00] MS Aperta19

NL: 2.11E4
 Base Peak m/z= 472.34509-472.34981 F: FTMS + p
 ESI Full ms [100.00-1500.00] MS Aperta19

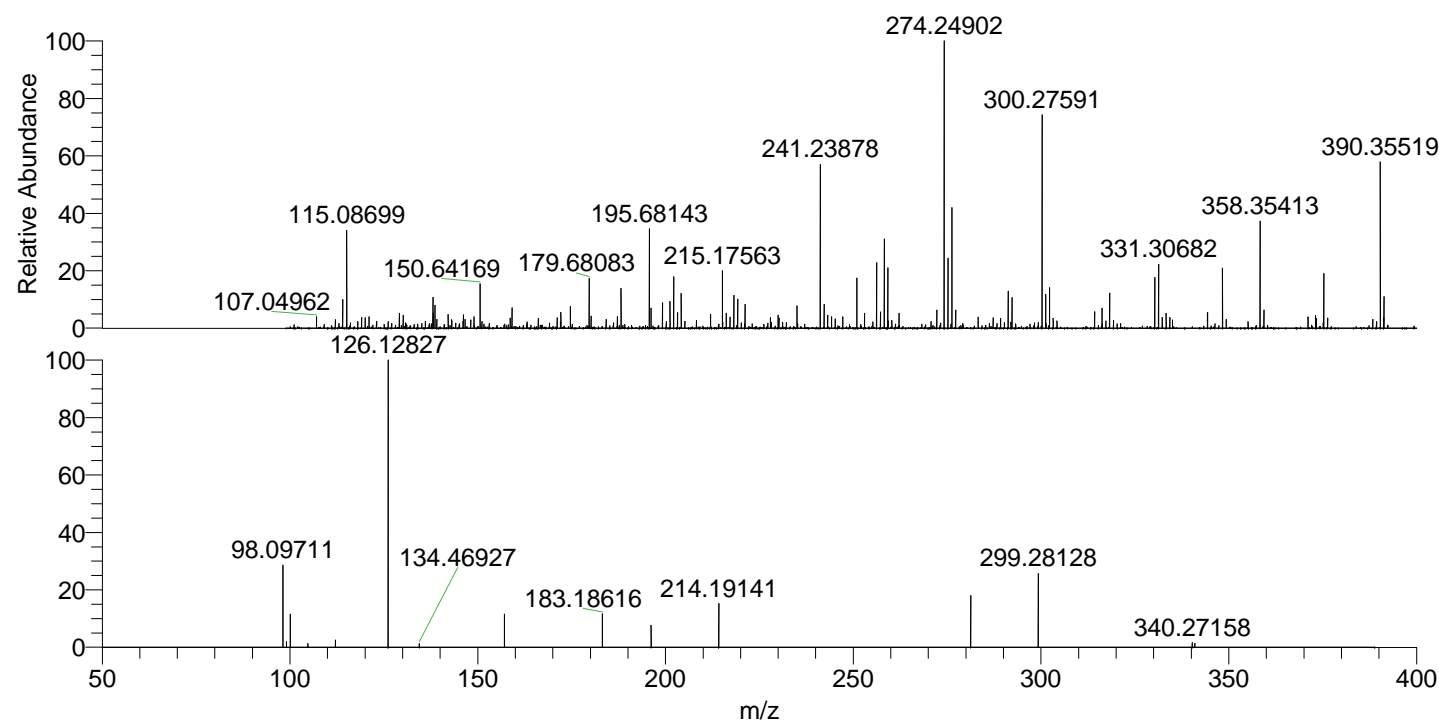
NL: 3.07E5
 Base Peak m/z= 50.00000-1500.00000 F: FTMS + p
 ESI d Full ms2 358.35@hcd35.00 [50.00-385.00]
 MS Aperta19

Aperta19#516 RT: 1.26

F: FTMS + p ESI d Full ms2 358.35 ...

m/z= 50.00000-1000.00000

m/z	Intensity	Relative
98.09711	85242.7	27.76
98.10273	3484.6	1.13
99.09266	5866.0	1.91
100.07659	35513.4	11.56
104.79483	3664.4	1.19
112.11313	7433.8	2.42
126.12827	307119.9	100.00
134.46927	3753.2	1.22
157.13394	34295.6	11.17
183.18616	34833.8	11.34
196.18219	22935.8	7.47
214.19141	47485.3	15.46
281.27023	53959.0	17.57
299.28128	76154.9	24.80
340.27158	4950.6	1.61
340.95996	4003.1	1.30



NL: 3.54E6
 Aperta19#511 RT:
 1.25 AV: 1 T: FTMS +
 p ESI Full lock ms
 [100.00-1500.00]

NL: 2.96E5
 Aperta19#385 RT:
 1.26 AV: 1 F: FTMS +
 p ESI d Full ms2
 358.35@hcd35.00
 [50.00-385.00]