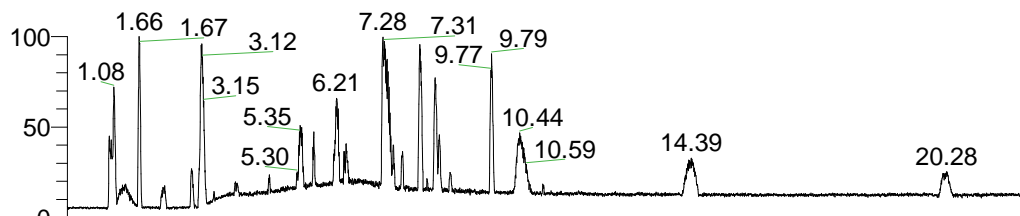


RT: 0.00 - 22.01



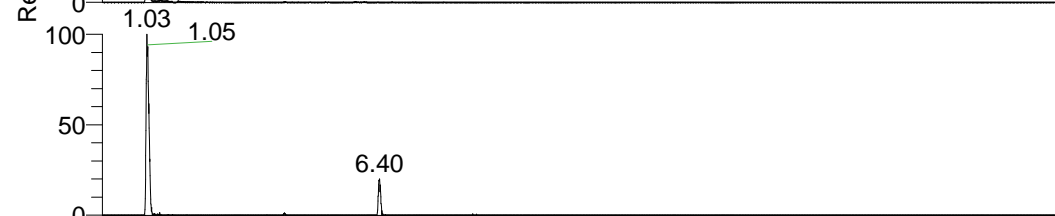
NL: 1.41E8  
 Base Peak m/z=  
 100.00000-1500.00000 F:  
 FTMS + p ESI Full ms  
 [100.00-1500.00] MS  
 Aperta\_HDX

Aaperta\_HDX#164 RT: 1.07  
 T: FTMS + p ESI Full ms [100.00-1500.00]  
 m/z= 358.00000-359.00000

m/z	Intensity	Relative	Delta (ppm)	Composition
358.38434	5631029.0	100.00	-1.96	C <sub>16</sub> H <sub>32</sub> <sup>2</sup> H <sub>9</sub> O <sub>2</sub> N <sub>6</sub>
			2.36	C <sub>16</sub> H <sub>30</sub> <sup>2</sup> H <sub>10</sub> O <sub>2</sub> N <sub>6</sub>
			-6.28	C <sub>16</sub> H <sub>34</sub> <sup>2</sup> H <sub>8</sub> O <sub>2</sub> N <sub>6</sub>



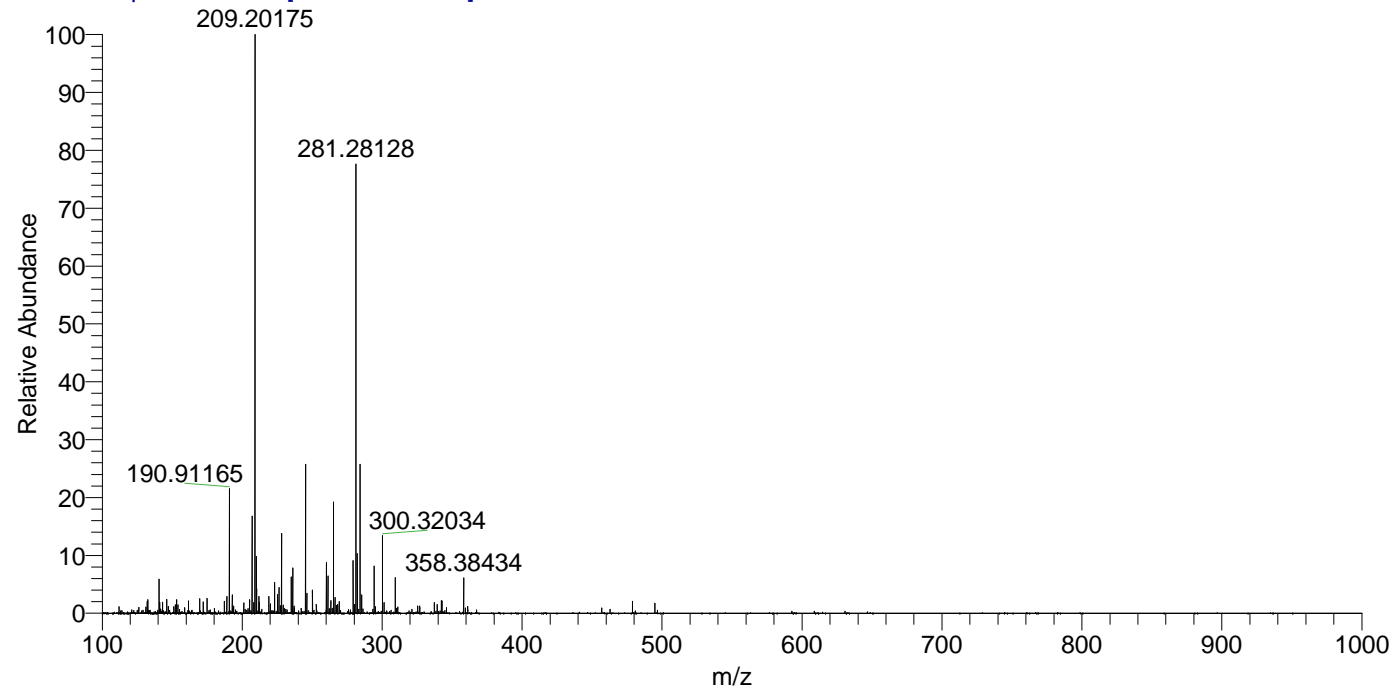
NL: 7.64E6  
 Base Peak m/z=  
 358.38380-358.38738 F:  
 FTMS + p ESI Full ms  
 [100.00-1500.00] MS  
 Aperta\_HDX



NL: 1.43E6  
 Base Peak m/z=  
 180.19895-180.20075 F:  
 FTMS + p ESI Full ms  
 [100.00-1500.00] MS  
 Aperta\_HDX

Aaperta\_HDX #164 RT: 1.07 AV: 1 NL: 8.99E7

T: FTMS + p ESI Full ms [100.00-1500.00]



Aaperta\_HDX #164 RT: 1.07 AV: 1 NL: 5.49E6

T: FTMS + p ESI Full ms [100.00-1500.00]

