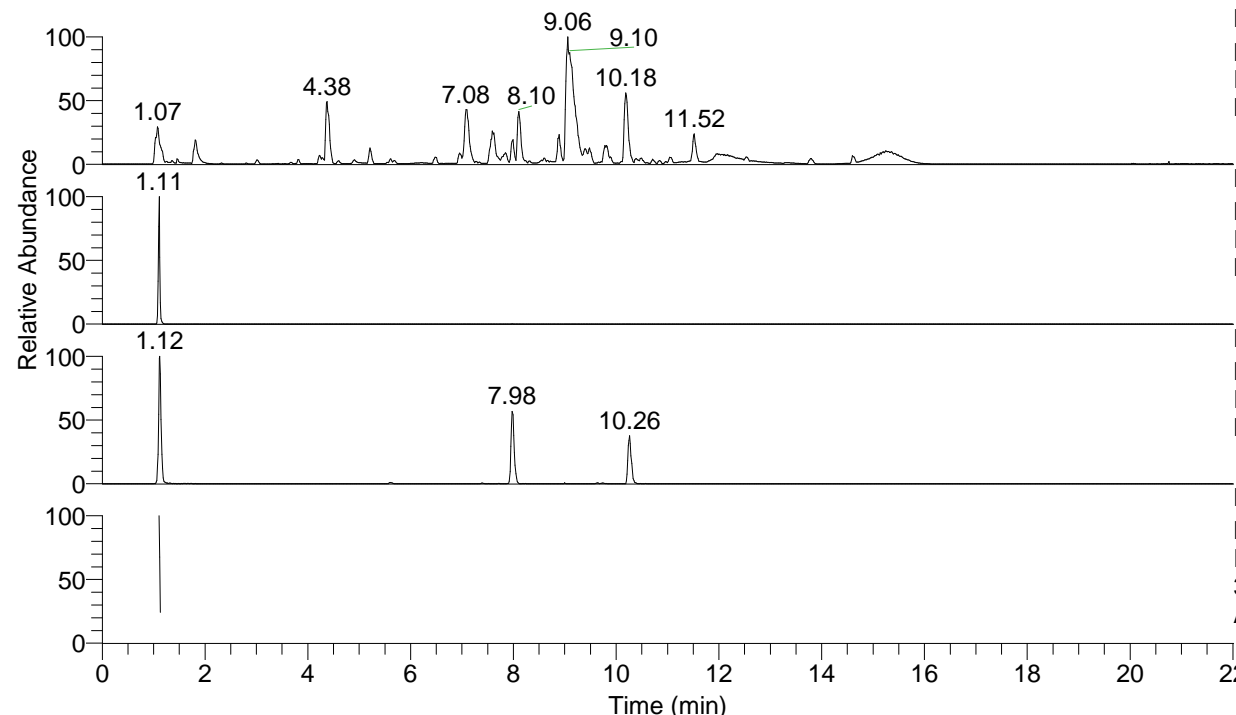


RT: 0.00 - 22.01



NL: 1.54E8  
 Base Peak m/z= 100.00000-1500.00000 F:  
 FTMS + p ESI Full ms [100.00-1500.00]  
 MS Aperta19

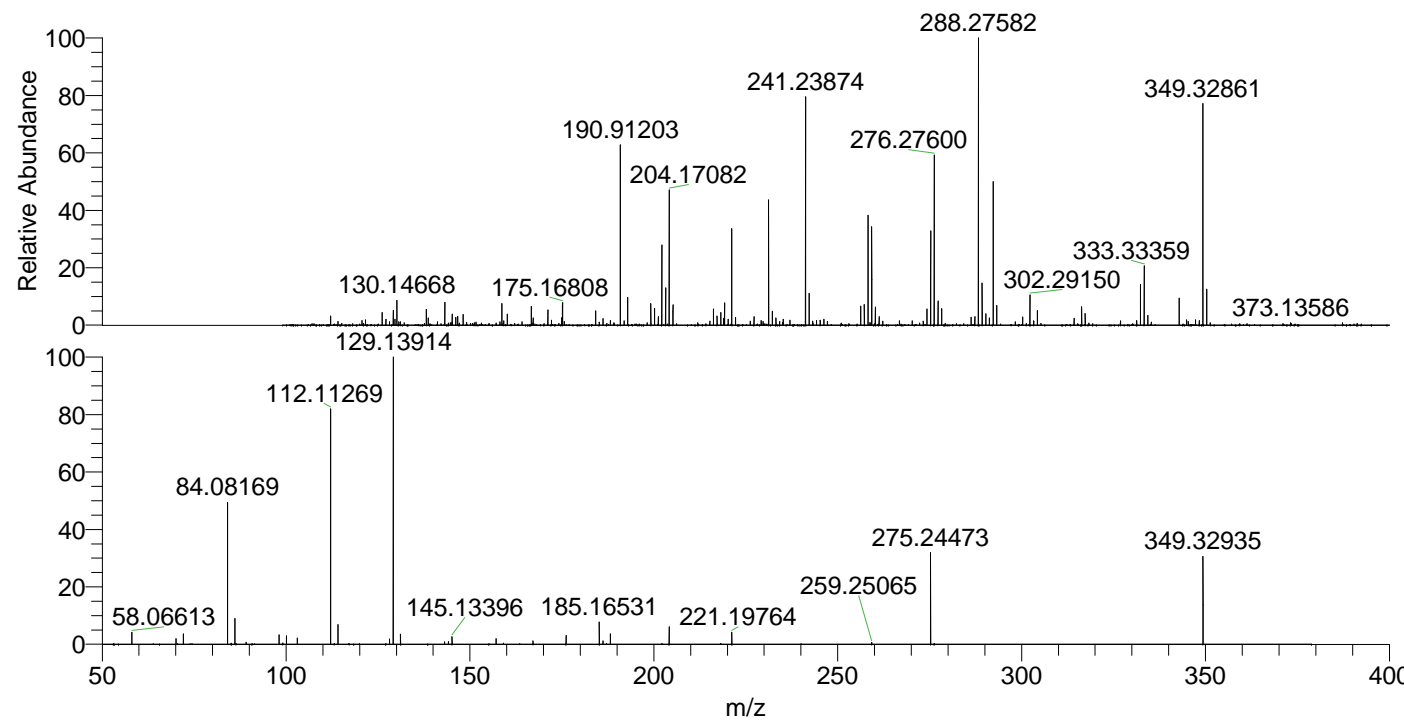
NL: 2.02E7  
 Base Peak m/z= 349.32735-349.33085 F:  
 FTMS + p ESI Full ms [100.00-1500.00]  
 MS Aperta19

NL: 2.11E6  
 Base Peak m/z= 175.16758-175.16934 F:  
 FTMS + p ESI Full ms [100.00-1500.00]  
 MS Aperta19

NL: 3.01E6  
 Base Peak m/z= 50.00000-1500.00000 F:  
 FTMS + p ESI d Full ms2  
 349.33@hcd35.00 [50.00-375.00] MS  
 Aperta19

Aaperta19#450-462 RT: 1.11-1.13 AV: 3  
 F: FTMS + p ESI d Full ms2 349.33@h ...  
 m/z= 50.00000-1000.00000

m/z	Intensity	Relative
58.06613	76725.9	4.20
70.06611	36405.5	1.99
72.08170	66660.6	3.65
84.08169	913749.4	49.99
86.06092	163826.8	8.96
89.10793	12863.1	0.70
98.09724	60306.8	3.30
100.07642	54466.6	2.98
103.08729	39451.0	2.16
112.11269	1489895.6	81.51
114.09201	124632.4	6.82
128.10744	33305.2	1.82
129.13914	1827765.1	100.00
131.11836	65187.8	3.57
143.11830	15385.2	0.84
144.12567	16576.2	0.91
145.13396	48205.1	2.64
157.13441	34695.2	1.90
167.15461	21287.4	1.16
176.14032	55172.9	3.02
185.16531	143927.2	7.87
186.16110	9373.2	0.51
186.19705	20934.8	1.15
188.17620	66205.8	3.62
204.17136	111566.8	6.10
221.19764	76897.4	4.21
259.25065	10697.0	0.59
275.24473	579128.1	31.69
349.32935	555566.6	30.40



NL: 2.60E7  
 Aaperta19#451 RT: 1.11  
 AV: 1 T: FTMS + p ESI  
 Full ms [100.00-1500.00]

NL: 1.81E6  
 Aaperta19#440-466 RT:  
 1.11-1.13 AV: 3 F: FTMS  
 + p ESI d Full ms2  
 349.33@hcd35.00  
 [50.00-375.00]