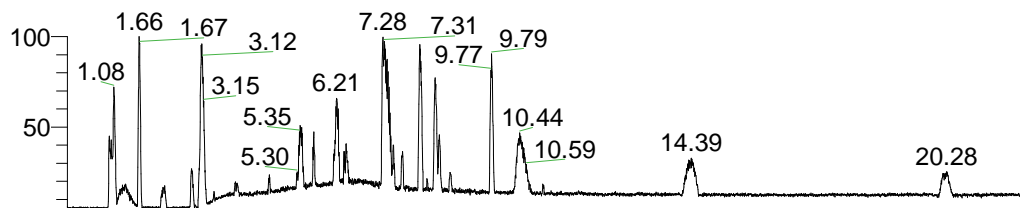


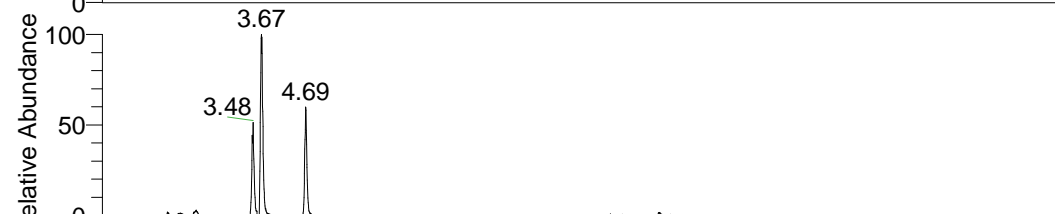
RT: 0.00 - 22.01



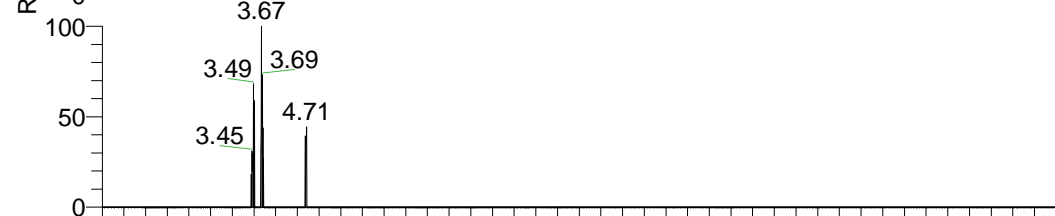
NL: 1.41E8
 Base Peak m/z=
 100.00000-1500.00000 F:
 FTMS + p ESI Full ms
 [100.00-1500.00] MS
 Aperta_HDX

Aperta_HDX#593 RT: 3.67
 T: FTMS + p ESI Full ms [100.00-1500.00]
 m/z= 347.00000-348.00000

m/z	Intensity	Relative	Delta (ppm)	Composition
347.28876	2652916.8	100.00	-1.51	C ₁₇ H ₂₃ ² H ₈ O ₃ N ₄
			2.95	C ₁₇ H ₂₁ ² H ₉ O ₃ N ₄
			-5.97	C ₁₇ H ₂₅ ² H ₇ O ₃ N ₄
			7.41	C ₁₇ H ₁₉ ² H ₁₀ O ₃ N ₄



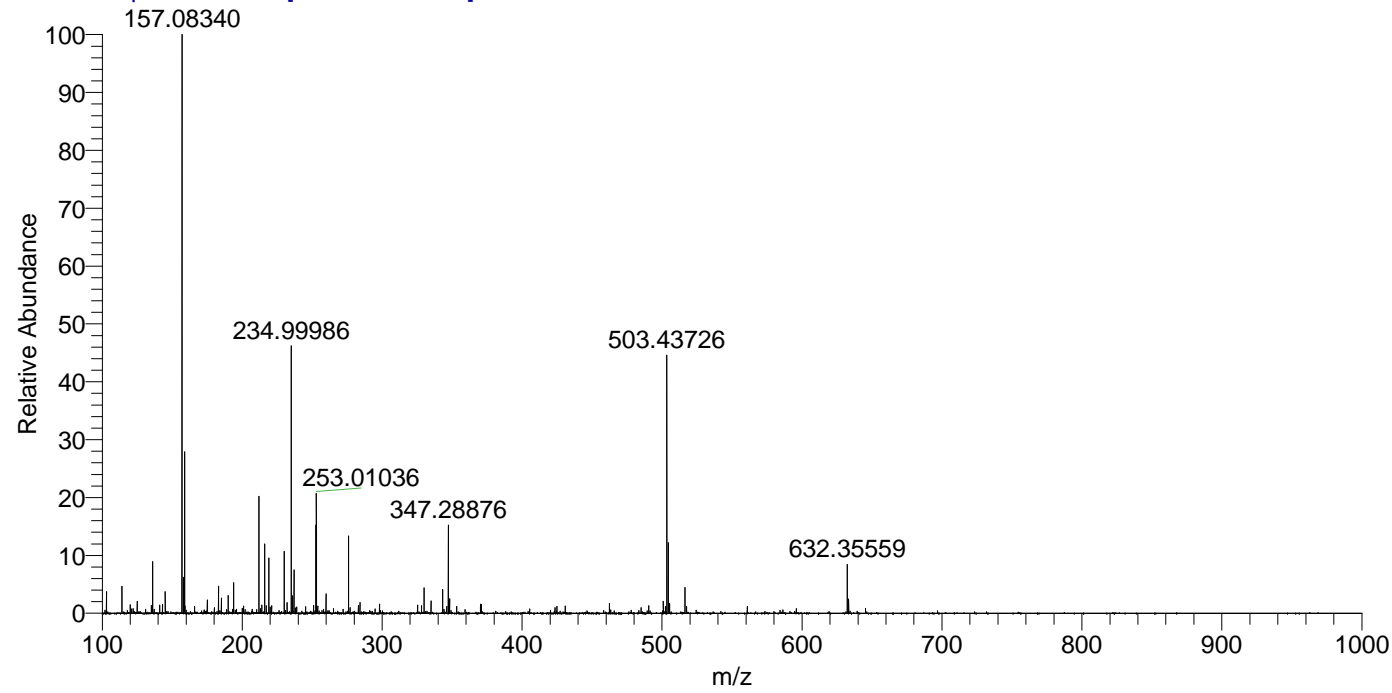
NL: 2.65E6
 Base Peak m/z=
 347.28809-347.29157 F:
 FTMS + p ESI Full ms
 [100.00-1500.00] MS
 Aperta_HDX



NL: 1.64E4
 Base Peak m/z=
 174.65110-174.65284 F:
 FTMS + p ESI Full ms
 [100.00-1500.00] MS
 Aperta_HDX

Aperta_HDX #593 RT: 3.67 AV: 1 NL: 1.72E7

T: FTMS + p ESI Full ms [100.00-1500.00]



Aperta_HDX #593 RT: 3.67 AV: 1 NL: 2.62E6

T: FTMS + p ESI Full ms [100.00-1500.00]

