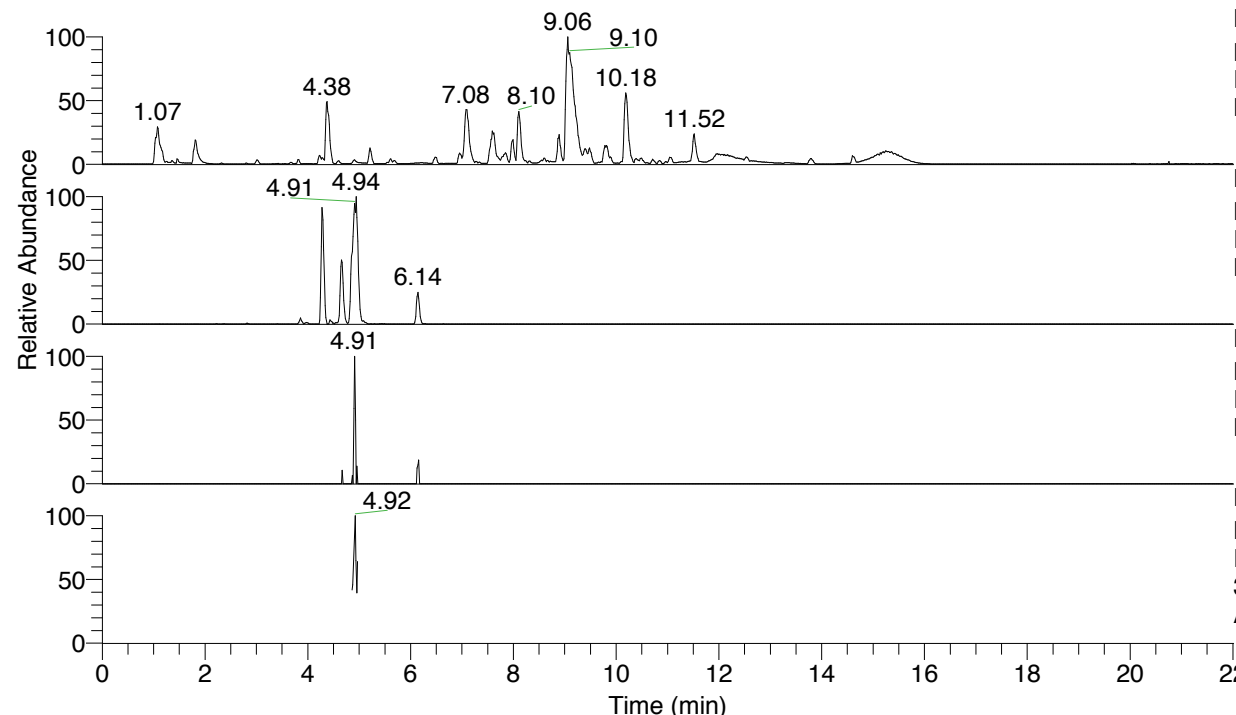


RT: 0.00 - 22.01



NL: 1.54E8
 Base Peak m/z= 100.00000-1500.00000 F:
 FTMS + p ESI Full ms [100.00-1500.00]
 MS Aperta19

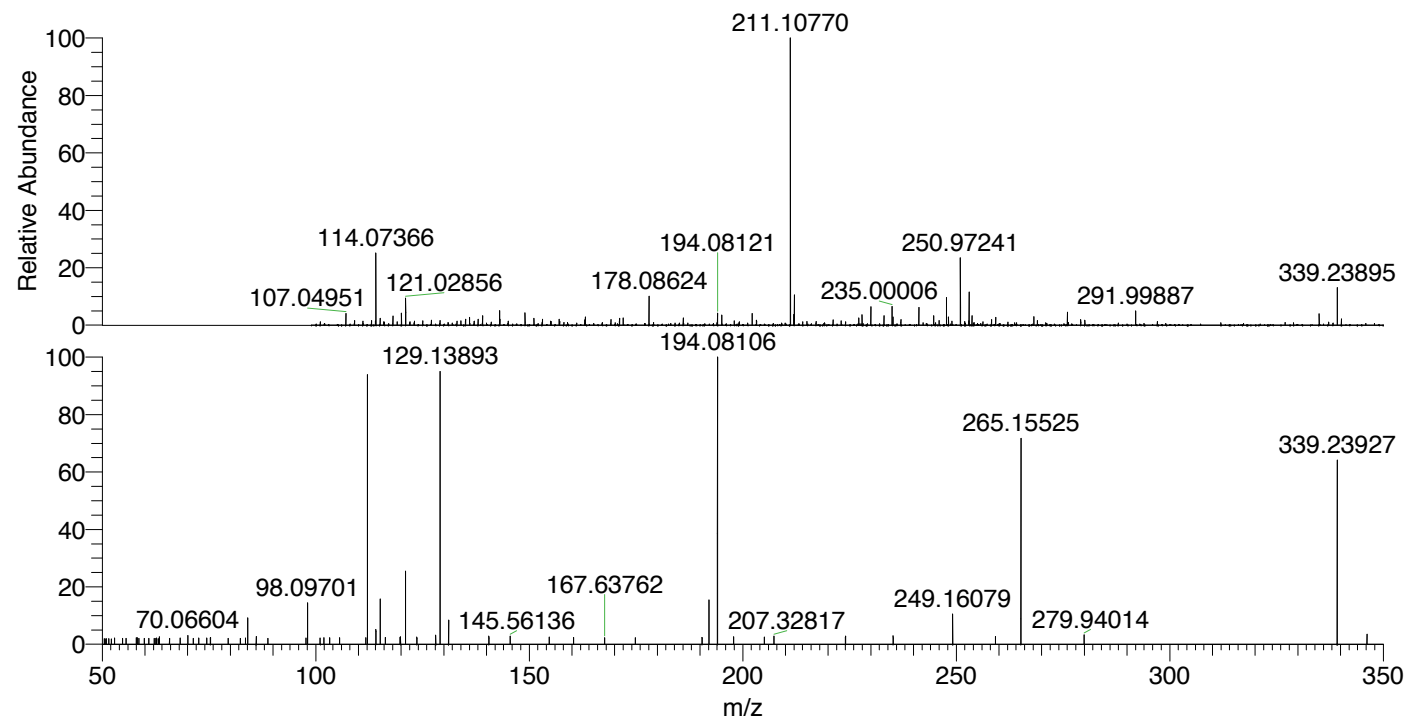
NL: 4.79E5
 Base Peak m/z= 339.23792-339.24132 F:
 FTMS + p ESI Full ms [100.00-1500.00]
 MS Aperta19

NL: 3.58E4
 Base Peak m/z= 170.12287-170.12457 F:
 FTMS + p ESI Full ms [100.00-1500.00]
 MS Aperta19

NL: 6.13E4
 Base Peak m/z= 50.00000-1500.00000 F:
 FTMS + p ESI d Full ms2
 339.24@hcd35.00 [50.00-365.00] MS
 Aperta19

Aperta19#1973-2003 RT: 4.88-4.95 AV:
 F: FTMS + p ESI d Full ms2 339.24 ...
 m/z= 50.00000-1000.00000

m/z	Intensity	Relative
50.47982	655.9	1.94
50.82938	619.9	1.84
50.94718	660.3	1.96
51.50955	669.9	1.99
52.12385	601.0	1.78
52.89531	762.9	2.26
54.73526	699.7	2.07
55.59492	694.6	2.06
58.01716	794.1	2.35
58.19628	785.8	2.33
58.56708	686.3	2.04
59.86229	723.0	2.14
60.93159	697.6	2.07
62.21583	688.3	2.04
62.53102	701.0	2.08
62.72305	740.3	2.20
62.74660	651.3	1.93
63.18402	659.6	1.96
63.36356	896.7	2.66
65.74550	703.9	2.09
68.26145	761.8	2.26
70.06604	1046.7	3.10
71.34454	686.3	2.04
72.56866	711.0	2.11
74.50035	767.8	2.28
75.33780	819.6	2.43
79.52765	715.0	2.12
82.37576	718.8	2.13
83.53419	718.2	2.13
84.08148	3098.9	9.19
86.06060	919.2	2.73
88.76745	707.3	2.10
97.70951	764.4	2.27
98.09701	4856.6	14.40
101.04539	730.5	2.17
101.93366	778.7	2.31
103.23764	768.6	2.28
105.60120	796.1	2.36
111.73069	758.4	2.25
112.11234	31509.4	93.43
114.09201	1752.4	5.20
115.12343	5363.7	15.90
116.31491	802.7	2.38
119.75112	793.0	2.35
119.86080	902.7	2.68
121.02880	8558.1	25.38
123.68756	846.6	2.51
128.10761	1074.9	3.19
129.13893	31876.4	94.52
131.11776	2878.2	8.53
140.55370	948.4	2.81
145.56136	992.3	2.94
154.69479	879.7	2.61
160.40377	808.9	2.40
167.63762	792.1	2.35
174.85058	785.6	2.33
190.47935	822.2	2.44



NL: 3.50E6
 Aperta19#1999 RT: 4.94
 AV: 1 T: FTMS + p ESI
 Full lock ms
 [100.00-1500.00]

NL: 3.35E4
 Aperta19#1969-2008
 RT: 4.88-4.95 AV: 4 F:
 FTMS + p ESI d Full ms2
 339.24@hcd35.00
 [50.00-365.00]

Aaperta19#1973-2003 RT: 4.88-4.95 AV: 4

F: FTMS + p ESI d Full ms2 339.24@hcd35.00 [50.00-365.00]

m/z= 50.00000-1000.00000

m/z	Intensity	Relative
50.47982	655.9	1.94
50.82938	619.9	1.84
50.94718	660.3	1.96
51.50955	669.9	1.99
52.12385	601.0	1.78
52.89531	762.9	2.26
54.73526	699.7	2.07
55.59492	694.6	2.06
58.01716	794.1	2.35
58.19628	785.8	2.33
58.56708	686.3	2.04
59.86229	723.0	2.14
60.93159	697.6	2.07
62.21583	688.3	2.04
62.53102	701.0	2.08
62.72305	740.3	2.20
62.74660	651.3	1.93
63.18402	659.6	1.96
63.36356	896.7	2.66
65.74550	703.9	2.09
68.26145	761.8	2.26
70.06604	1046.7	3.10
71.34454	686.3	2.04
72.56866	711.0	2.11
74.50035	767.8	2.28
75.33780	819.6	2.43
79.52765	715.0	2.12
82.37576	718.8	2.13
83.53419	718.2	2.13
84.08148	3098.9	9.19
86.06060	919.2	2.73
88.76745	707.3	2.10
97.70951	764.4	2.27
98.09701	4856.6	14.40
101.04539	730.5	2.17
101.93366	778.7	2.31
103.23764	768.6	2.28
105.60120	796.1	2.36
111.73069	758.4	2.25

Aaperta19#1973-2003 RT: 4.88-4.95 AV: 4

F: FTMS + p ESI d Full ms2 339.24@hcd35.00 [50.00-365.00]

m/z= 50.00000-1000.00000

m/z	Intensity	Relative
112.11234	31509.4	93.43
114.09201	1752.4	5.20
115.12343	5363.7	15.90
116.31491	802.7	2.38
119.75112	793.0	2.35
119.86080	902.7	2.68
121.02880	8558.1	25.38
123.68756	846.6	2.51
128.10761	1074.9	3.19
129.13893	31876.4	94.52
131.11776	2878.2	8.53
140.55370	948.4	2.81
145.56136	992.3	2.94
154.69479	879.7	2.61
160.40377	808.9	2.40
167.63762	792.1	2.35
174.85058	785.6	2.33
190.47935	822.2	2.44
192.10190	5278.4	15.65
194.08106	33724.2	100.00
197.87436	892.6	2.65
205.06368	850.5	2.52
207.32817	973.6	2.89
224.06443	963.6	2.86
235.22795	999.0	2.96
249.16079	3569.7	10.59
259.17216	930.4	2.76
265.15525	24239.1	71.87
279.94014	1142.6	3.39
339.23927	21488.5	63.72
346.21422	1187.4	3.52
353.59270	926.4	2.75
355.72092	842.8	2.50