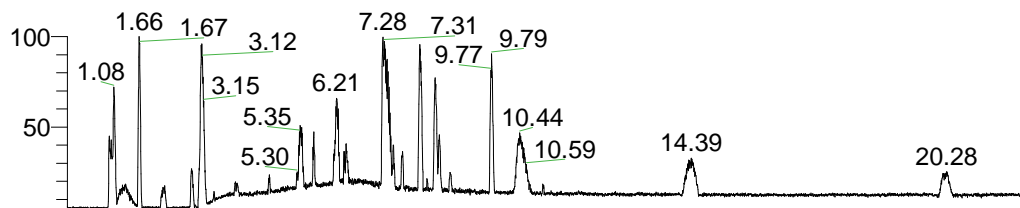


RT: 0.00 - 22.01



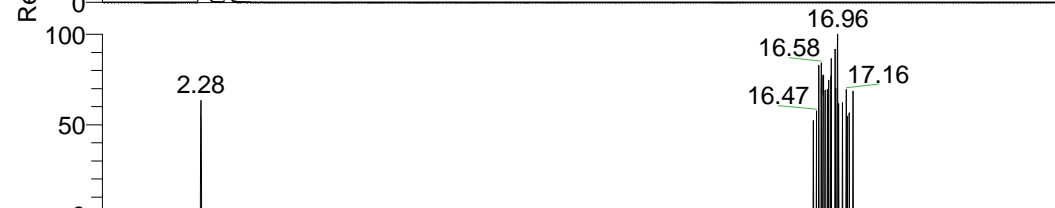
NL: 1.41E8  
 Base Peak m/z=  
 100.00000-1500.00000 F:  
 FTMS + p ESI Full ms  
 [100.00-1500.00] MS  
 Aperta\_HDX

Aperta\_HDX#460 RT: 2.87  
 T: FTMS + p ESI Full ms [100.00-1500.00]  
 m/z= 330.00000-331.00000

m/z	Intensity	Relative	Delta (ppm)	Composition
330.28751	5924689.5	100.00	-1.77	C <sub>17</sub> H <sub>24</sub> <sup>2</sup> H <sub>7</sub> O <sub>2</sub> N <sub>4</sub>
			2.92	C <sub>17</sub> H <sub>22</sub> <sup>2</sup> H <sub>8</sub> O <sub>2</sub> N <sub>4</sub>
			-6.46	C <sub>17</sub> H <sub>26</sub> <sup>2</sup> H <sub>6</sub> O <sub>2</sub> N <sub>4</sub>
			7.61	C <sub>17</sub> H <sub>20</sub> <sup>2</sup> H <sub>9</sub> O <sub>2</sub> N <sub>4</sub>

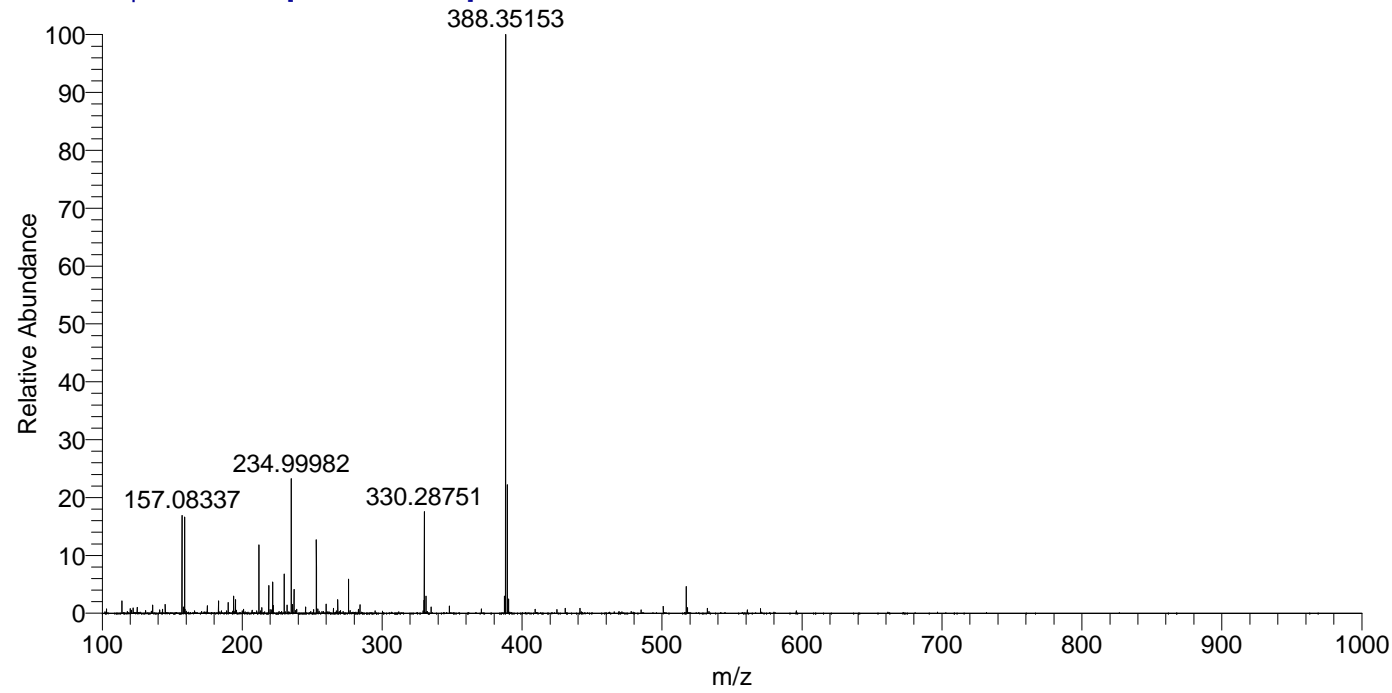


NL: 6.45E6  
 Base Peak m/z=  
 330.28699-330.29029 F:  
 FTMS + p ESI Full ms  
 [100.00-1500.00] MS  
 Aperta\_HDX



NL: 5.67E3  
 Base Peak m/z=  
 166.15054-166.15220 F:  
 FTMS + p ESI Full ms  
 [100.00-1500.00] MS  
 Aperta\_HDX

Aperta\_HDX #460 RT: 2.87 AV: 1 NL: 3.33E7  
 T: FTMS + p ESI Full ms [100.00-1500.00]



Aperta\_HDX #460 RT: 2.87 AV: 1 NL: 5.85E6  
 T: FTMS + p ESI Full ms [100.00-1500.00]

