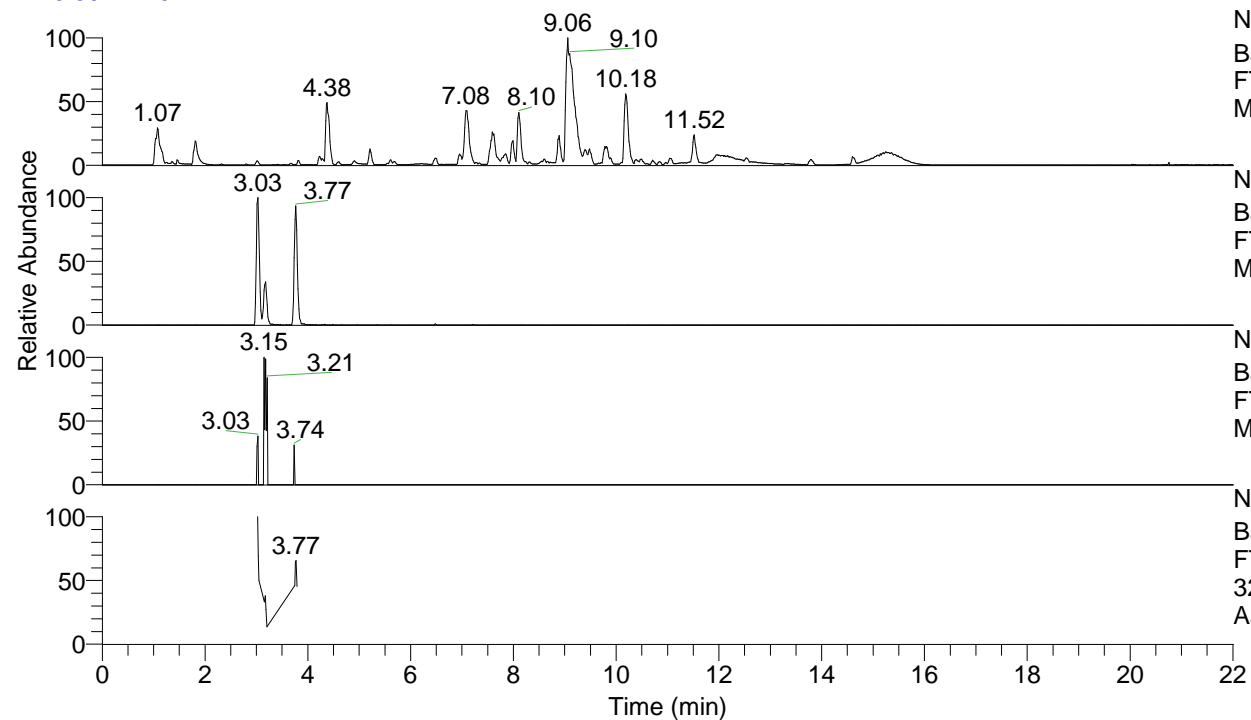


RT: 0.00 - 22.01



NL: 1.54E8
 Base Peak m/z= 100.00000-1500.00000 F:
 FTMS + p ESI Full ms [100.00-1500.00]
 MS Aperta19

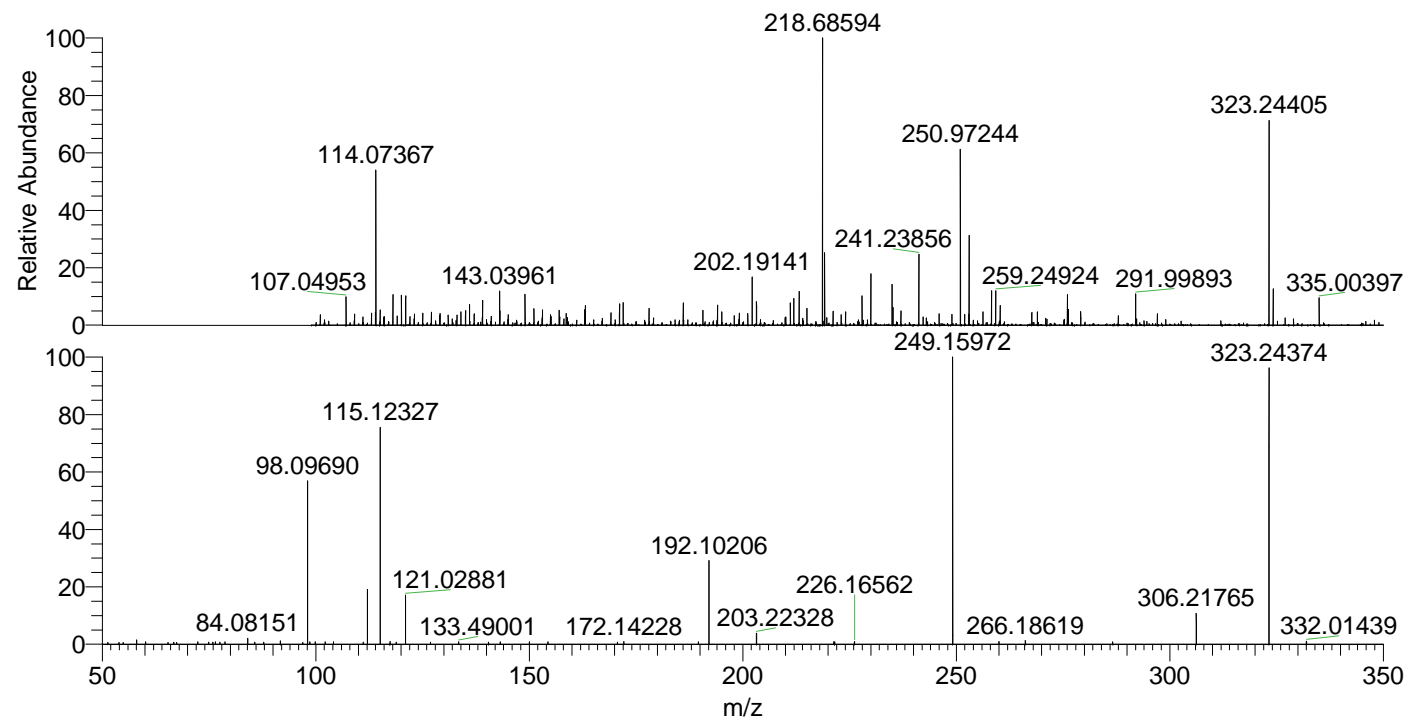
NL: 9.91E5
 Base Peak m/z= 323.24308-323.24632 F:
 FTMS + p ESI Full ms [100.00-1500.00]
 MS Aperta19

NL: 5.49E3
 Base Peak m/z= 162.12545-162.12707 F:
 FTMS + p ESI Full ms [100.00-1500.00]
 MS Aperta19

NL: 2.06E5
 Base Peak m/z= 50.00000-1500.00000 F:
 FTMS + p ESI d Full ms2
 323.24@hcd35.00 [50.00-350.00] MS
 Aperta19

Aperta19#1517-1533 RT: 3.75-3.79 AV:
 F: FTMS + p ESI d Full ms2 323.24 ...
 m/z= 50.00000-1000.00000

m/z	Intensity	Relative
51.32106	581.7	0.56
53.90011	651.3	0.63
54.90457	621.3	0.60
58.06599	1518.2	1.47
60.13797	858.2	0.83
65.39886	684.5	0.66
66.74857	679.1	0.66
66.77254	797.6	0.77
67.42467	687.5	0.67
72.36503	813.8	0.79
74.93181	797.8	0.77
75.87200	803.3	0.78
76.52258	901.5	0.87
77.57177	779.8	0.76
78.71845	853.4	0.83
84.08151	2166.1	2.10
85.74479	737.3	0.71
87.79103	768.4	0.75
91.75162	1198.7	1.16
96.93265	679.7	0.66
98.09690	58802.9	57.02
98.61833	848.9	0.82
99.87046	906.2	0.88
102.23949	891.1	0.86
104.15435	830.3	0.81
111.12908	805.7	0.78
112.11255	20312.8	19.70
115.09996	718.2	0.70
115.12327	78739.5	76.35
117.39600	954.3	0.93
118.83506	773.2	0.75
121.02881	17597.6	17.06
126.86059	744.2	0.72
133.49001	890.5	0.86
140.47702	771.6	0.75
143.19958	832.8	0.81
150.03510	884.4	0.86
154.38252	877.6	0.85
170.64019	817.6	0.79
172.14228	925.0	0.90
189.60976	904.7	0.88
192.10206	30114.0	29.20
203.22328	4009.7	3.89
221.30719	861.2	0.84
221.52730	888.2	0.86
226.16562	930.8	0.90
249.15972	103131.4	100.00
260.02061	929.9	0.90
266.18619	1305.3	1.27
286.63241	879.2	0.85
306.21765	11318.8	10.98
323.24374	100043.6	97.01
332.01439	1136.9	1.10



NL: 1.25E6
 Aperta19#1525 RT: 3.77
 AV: 1 T: FTMS + p ESI
 Full lock ms
 [100.00-1500.00]

NL: 1.03E5
 Aperta19#1514-1535
 RT: 3.75-3.79 AV: 4 F:
 FTMS + p ESI d Full ms2
 323.24@hcd35.00
 [50.00-350.00]