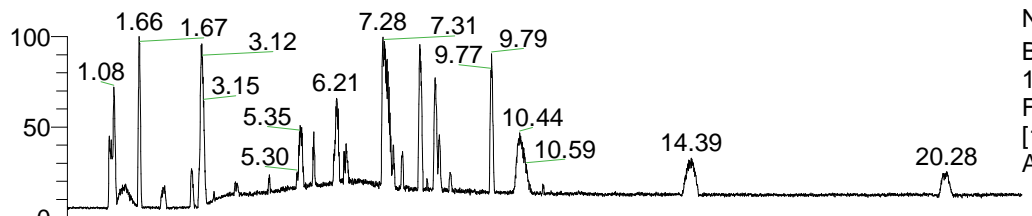


RT: 0.00 - 22.01



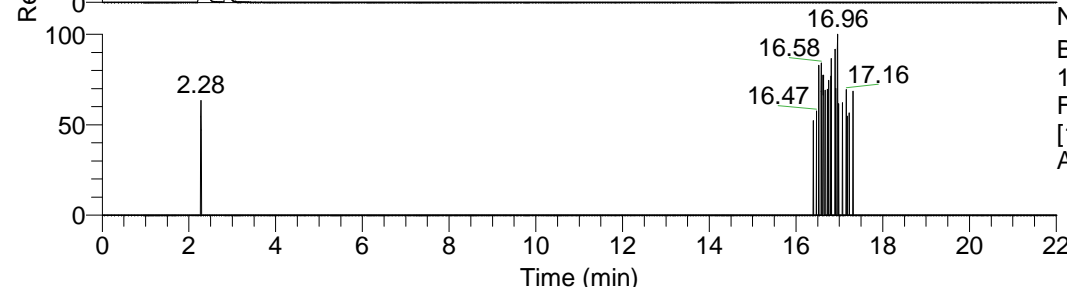
NL: 1.41E8
 Base Peak m/z=
 100.00000-1500.00000 F:
 FTMS + p ESI Full ms
 [100.00-1500.00] MS
 Aperta_HDX

Aaperta_HDX#383 RT: 2.38
 T: FTMS + p ESI Full ms [100.00-1500.00]
 m/z= 330.00000-331.00000

m/z	Intensity	Relative	Delta (ppm)	Composition
330.28757	2565131.3	100.00	-1.58	C ₁₇ H ₂₄ ² H ₇ O ₂ N ₄
			3.10	C ₁₇ H ₂₂ ² H ₈ O ₂ N ₄
			-6.27	C ₁₇ H ₂₆ ² H ₆ O ₂ N ₄
			7.79	C ₁₇ H ₂₀ ² H ₉ O ₂ N ₄

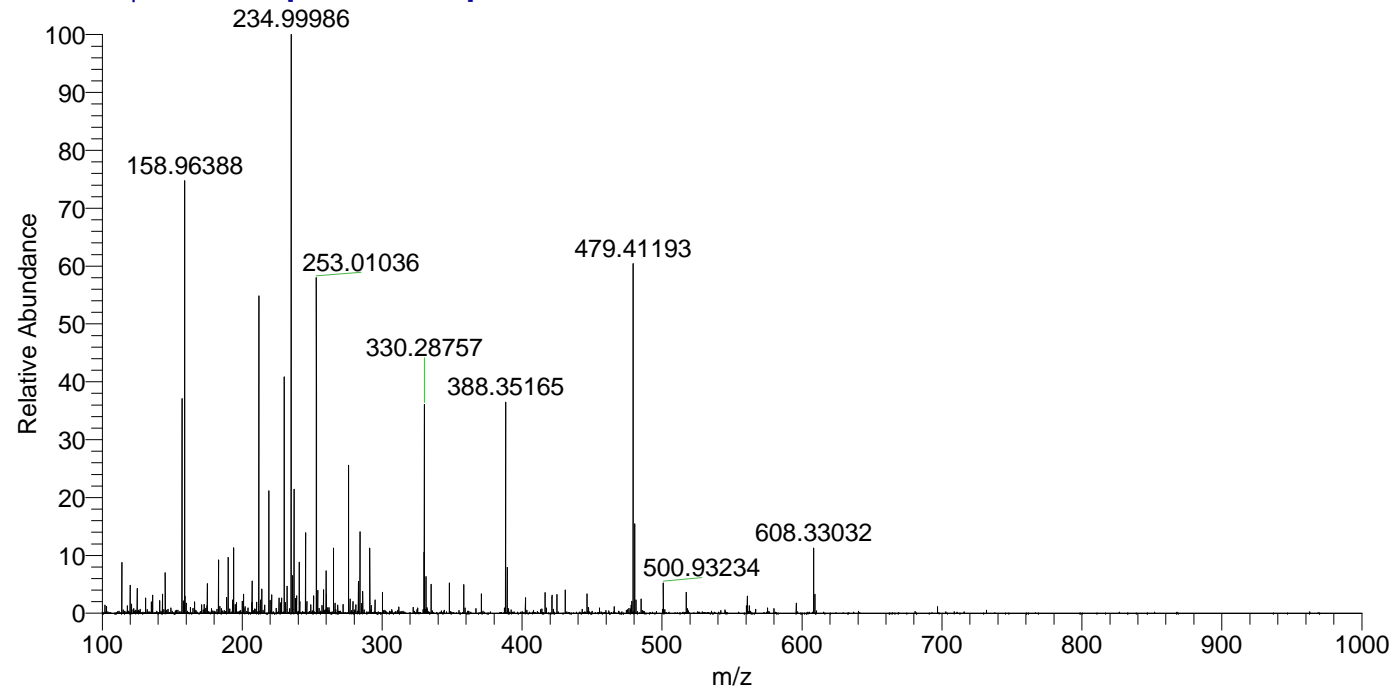


NL: 6.45E6
 Base Peak m/z=
 330.28699-330.29029 F:
 FTMS + p ESI Full ms
 [100.00-1500.00] MS
 Aperta_HDX



NL: 5.67E3
 Base Peak m/z=
 166.15054-166.15220 F:
 FTMS + p ESI Full ms
 [100.00-1500.00] MS
 Aperta_HDX

Aaperta_HDX #383 RT: 2.38 AV: 1 NL: 7.09E6
 T: FTMS + p ESI Full ms [100.00-1500.00]



Aaperta_HDX #383 RT: 2.38 AV: 1 NL: 2.56E6
 T: FTMS + p ESI Full ms [100.00-1500.00]

