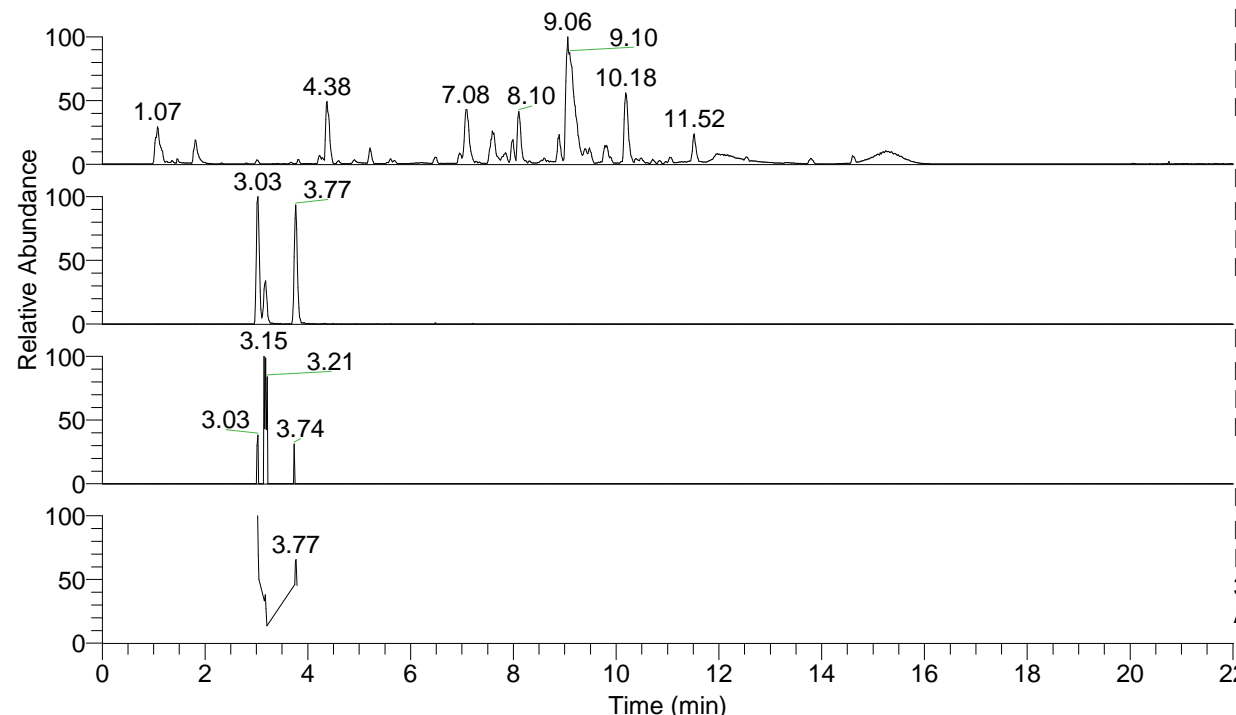


RT: 0.00 - 22.01



NL: 1.54E8  
 Base Peak m/z= 100.00000-1500.00000 F:  
 FTMS + p ESI Full ms [100.00-1500.00]  
 MS Aperta19

NL: 9.91E5  
 Base Peak m/z= 323.24308-323.24632 F:  
 FTMS + p ESI Full ms [100.00-1500.00]  
 MS Aperta19

NL: 5.49E3  
 Base Peak m/z= 162.12545-162.12707 F:  
 FTMS + p ESI Full ms [100.00-1500.00]  
 MS Aperta19

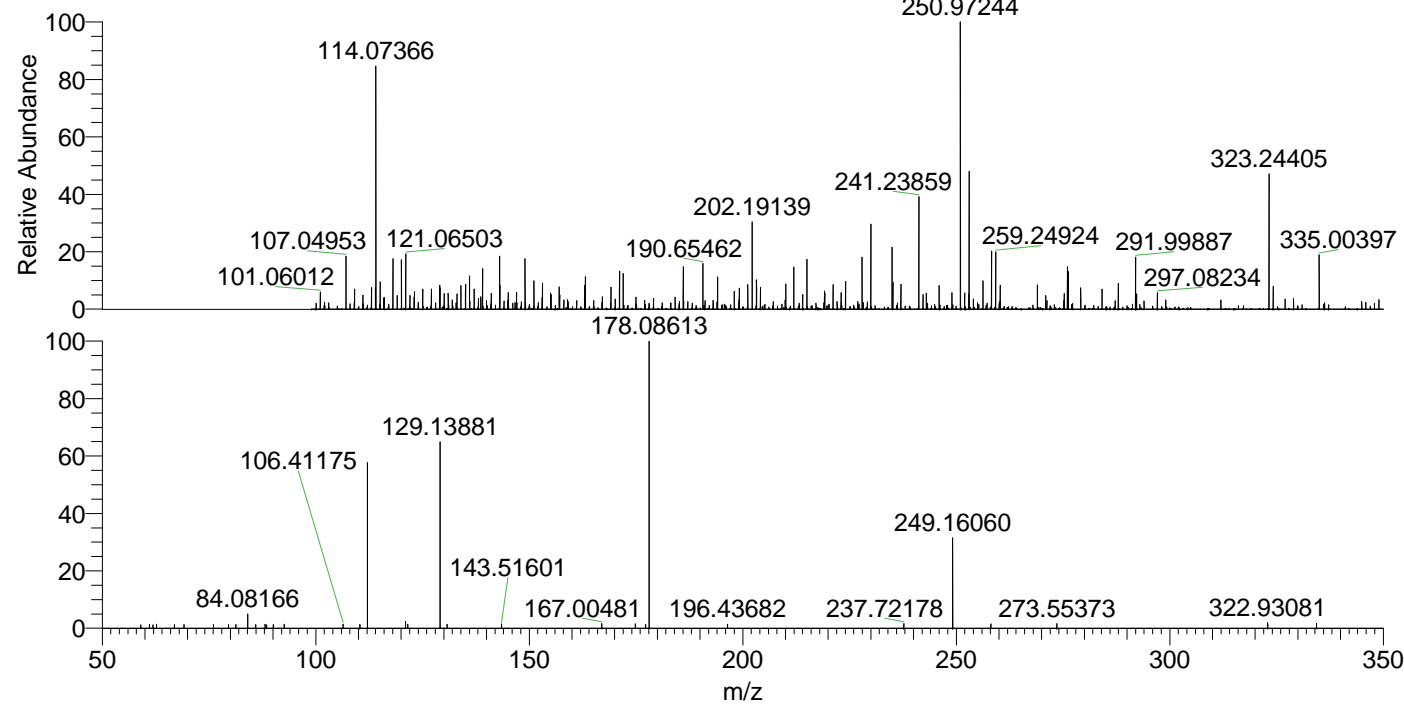
NL: 2.06E5  
 Base Peak m/z= 50.00000-1500.00000 F:  
 FTMS + p ESI d Full ms2  
 323.24@hcd35.00 [50.00-350.00] MS  
 Aperta19

Aperta19#1282-1301 RT: 3.16-3.20 AV:

F: FTMS + p ESI d Full ms2 323.24 ...

m/z= 50.00000-1000.00000

m/z	Intensity	Relative
59.03381	660.3	1.19
61.03311	708.6	1.28
61.91052	665.4	1.20
62.70719	806.6	1.45
66.93671	677.5	1.22
69.14598	710.7	1.28
76.03614	694.8	1.25
79.57170	738.1	1.33
81.27909	690.2	1.24
84.08166	2716.7	4.90
85.95519	700.3	1.26
88.15400	766.6	1.38
88.48328	681.2	1.23
90.06679	730.7	1.32
92.64454	739.0	1.33
106.41175	766.6	1.38
110.34359	688.8	1.24
112.11239	31760.4	57.25
121.02902	1287.3	2.32
121.53523	810.4	1.46
129.13014	1093.3	1.97
129.13881	35680.4	64.31
130.75727	762.5	1.37
143.51601	861.3	1.55
167.00481	903.8	1.63
174.83582	866.2	1.56
177.25423	794.0	1.43
178.08613	55480.2	100.00
196.43682	776.0	1.40
237.72178	908.8	1.64
249.16060	17295.3	31.17
258.10304	830.3	1.50
273.55373	879.6	1.59
322.93081	1097.5	1.98
334.37453	924.8	1.67



NL: 7.12E5  
 Aperta19#1291 RT: 3.18  
 AV: 1 T: FTMS + p ESI  
 Full lock ms  
 [100.00-1500.00]

NL: 5.48E4  
 Aperta19#1274-1306  
 RT: 3.16-3.20 AV: 4 F:  
 FTMS + p ESI d Full ms2  
 323.24@hcd35.00  
 [50.00-350.00]