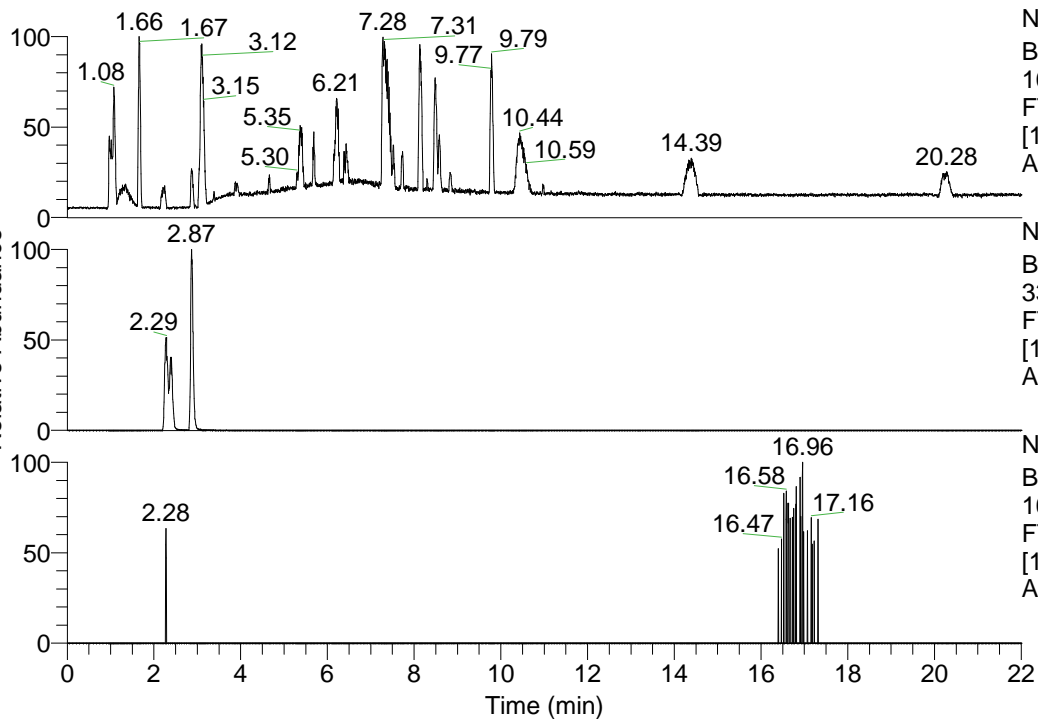


RT: 0.00 - 22.01



NL: 1.41E8  
 Base Peak m/z=  
 100.00000-1500.00000 F:  
 FTMS + p ESI Full ms  
 [100.00-1500.00] MS  
 Aperta\_HDX

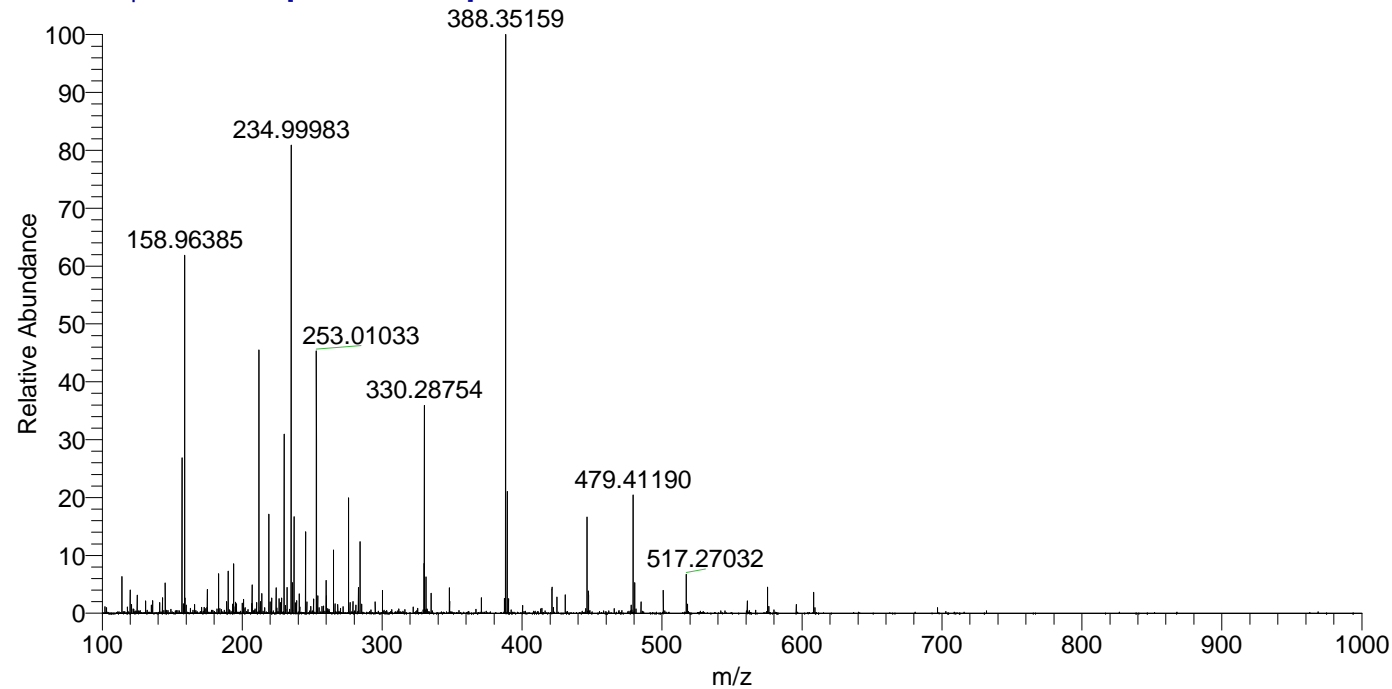
Aperta\_HDX#369 RT: 2.29  
 T: FTMS + p ESI Full ms [100.00-1500.00]  
 m/z= 330.00000-331.00000

m/z	Intensity	Relative	Delta (ppm)	Composition
330.28754	3316562.3	100.00	-1.68	C <sub>17</sub> H <sub>24</sub> <sup>2</sup> H <sub>7</sub> O <sub>2</sub> N <sub>4</sub>
			3.01	C <sub>17</sub> H <sub>22</sub> <sup>2</sup> H <sub>8</sub> O <sub>2</sub> N <sub>4</sub>
			-6.36	C <sub>17</sub> H <sub>26</sub> <sup>2</sup> H <sub>6</sub> O <sub>2</sub> N <sub>4</sub>
			7.70	C <sub>17</sub> H <sub>20</sub> <sup>2</sup> H <sub>9</sub> O <sub>2</sub> N <sub>4</sub>

NL: 6.45E6  
 Base Peak m/z=  
 330.28699-330.29029 F:  
 FTMS + p ESI Full ms  
 [100.00-1500.00] MS  
 Aperta\_HDX

NL: 5.67E3  
 Base Peak m/z=  
 166.15054-166.15220 F:  
 FTMS + p ESI Full ms  
 [100.00-1500.00] MS  
 Aperta\_HDX

Aperta\_HDX #369 RT: 2.29 AV: 1 NL: 9.19E6  
 T: FTMS + p ESI Full ms [100.00-1500.00]



Aperta\_HDX #369 RT: 2.29 AV: 1 NL: 3.30E6  
 T: FTMS + p ESI Full ms [100.00-1500.00]

