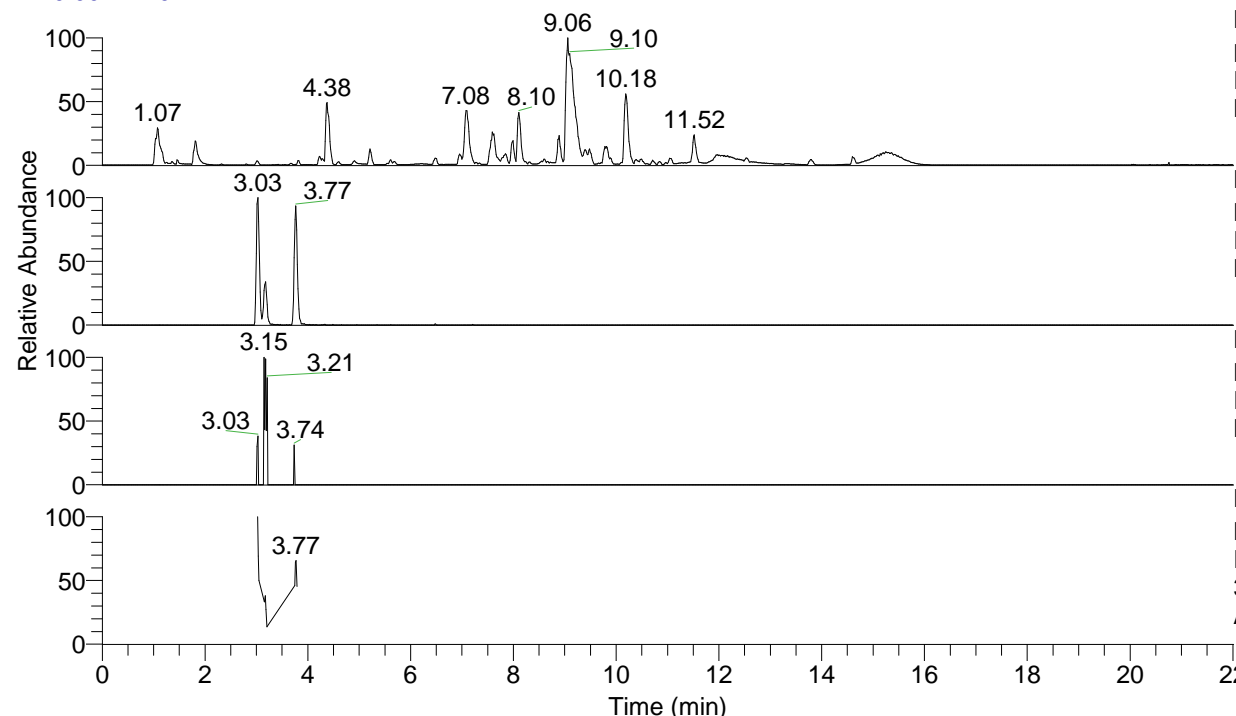


RT: 0.00 - 22.01



NL: 1.54E8
 Base Peak m/z= 100.00000-1500.00000 F:
 FTMS + p ESI Full ms [100.00-1500.00]
 MS Aperta19

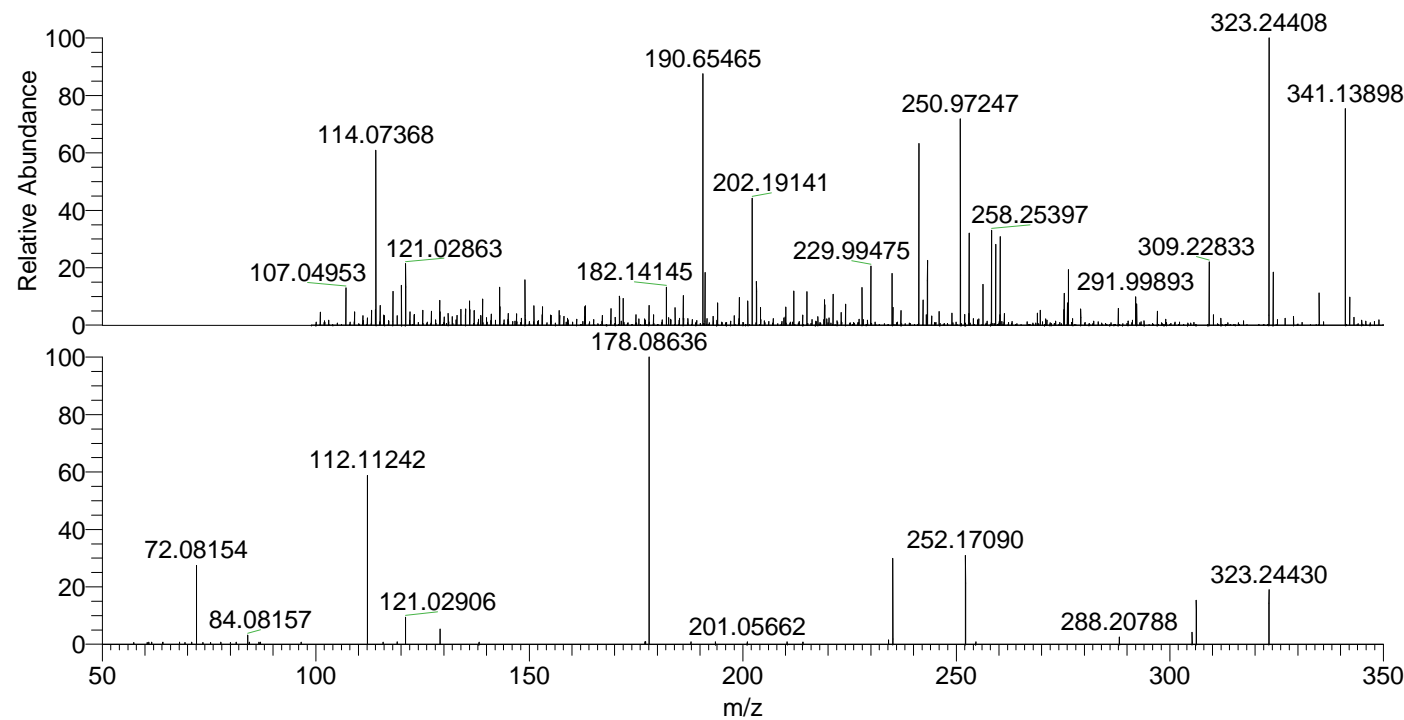
NL: 9.91E5
 Base Peak m/z= 323.24308-323.24632 F:
 FTMS + p ESI Full ms [100.00-1500.00]
 MS Aperta19

NL: 5.49E3
 Base Peak m/z= 162.12545-162.12707 F:
 FTMS + p ESI Full ms [100.00-1500.00]
 MS Aperta19

NL: 2.06E5
 Base Peak m/z= 50.00000-1500.00000 F:
 FTMS + p ESI d Full ms2
 323.24@hcd35.00 [50.00-350.00] MS
 Aperta19

Aperta19#1228-1239 RT: 3.02-3.05 AV:
 F: FTMS + p ESI d Full ms2 323.24 ...
 m/z= 50.00000-1000.00000

m/z	Intensity	Relative
57.39693	876.1	0.60
60.50335	901.3	0.62
60.93821	1027.2	0.71
61.54894	1006.6	0.69
61.60996	902.9	0.62
64.16008	871.7	0.60
64.17527	968.1	0.67
68.08994	1047.6	0.72
69.37067	933.1	0.64
70.94875	1043.6	0.72
72.08154	39355.3	27.03
73.55913	870.5	0.60
75.35939	915.7	0.63
77.79945	1078.9	0.74
80.04555	896.3	0.62
81.37209	1139.1	0.78
84.08157	4525.9	3.11
84.43130	985.3	0.68
86.70616	1126.0	0.77
87.01661	906.8	0.62
87.03424	1072.8	0.74
96.57196	1073.7	0.74
112.11242	84121.3	57.78
115.80846	1092.8	0.75
119.09745	1131.1	0.78
121.02906	13462.8	9.25
129.13924	7510.2	5.16
138.23787	1001.0	0.69
177.10337	1287.7	0.88
177.26918	1376.6	0.95
178.08636	145580.0	100.00
187.87105	1142.1	0.78
193.62026	1167.8	0.80
201.05662	1230.5	0.85
210.40697	1173.5	0.81
214.09328	1129.2	0.78
234.16026	2185.3	1.50
235.14409	42673.0	29.31
252.17090	44844.7	30.80
254.58722	1230.4	0.85
288.20788	3630.1	2.49
305.23472	6009.8	4.13
306.21734	21874.8	15.03
323.24430	27050.2	18.58



NL: 9.60E5
 Aperta19#1231 RT: 3.03
 AV: 1 T: FTMS + p ESI
 Full lock ms
 [100.00-1500.00]

NL: 1.42E5
 Aperta19#1219-1245
 RT: 3.02-3.05 AV: 3 F:
 FTMS + p ESI d Full ms2
 323.24@hcd35.00
 [50.00-350.00]