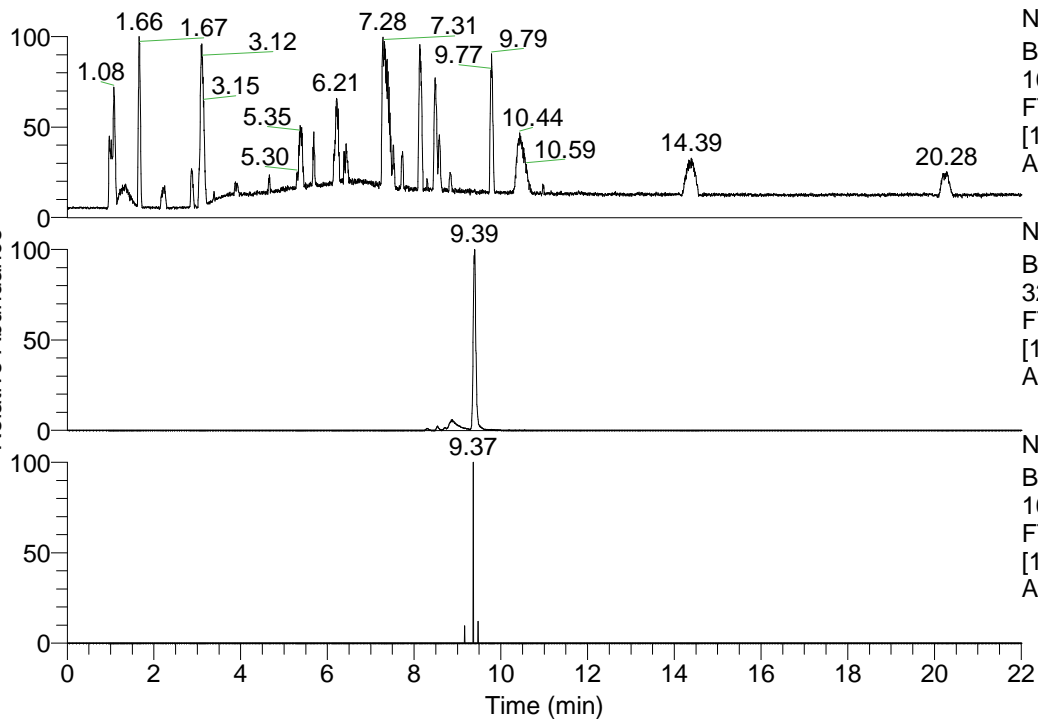


RT: 0.00 - 22.01



NL: 1.41E8  
 Base Peak m/z=  
 100.00000-1500.00000 F:  
 FTMS + p ESI Full ms  
 [100.00-1500.00] MS  
 Aperta\_HDX

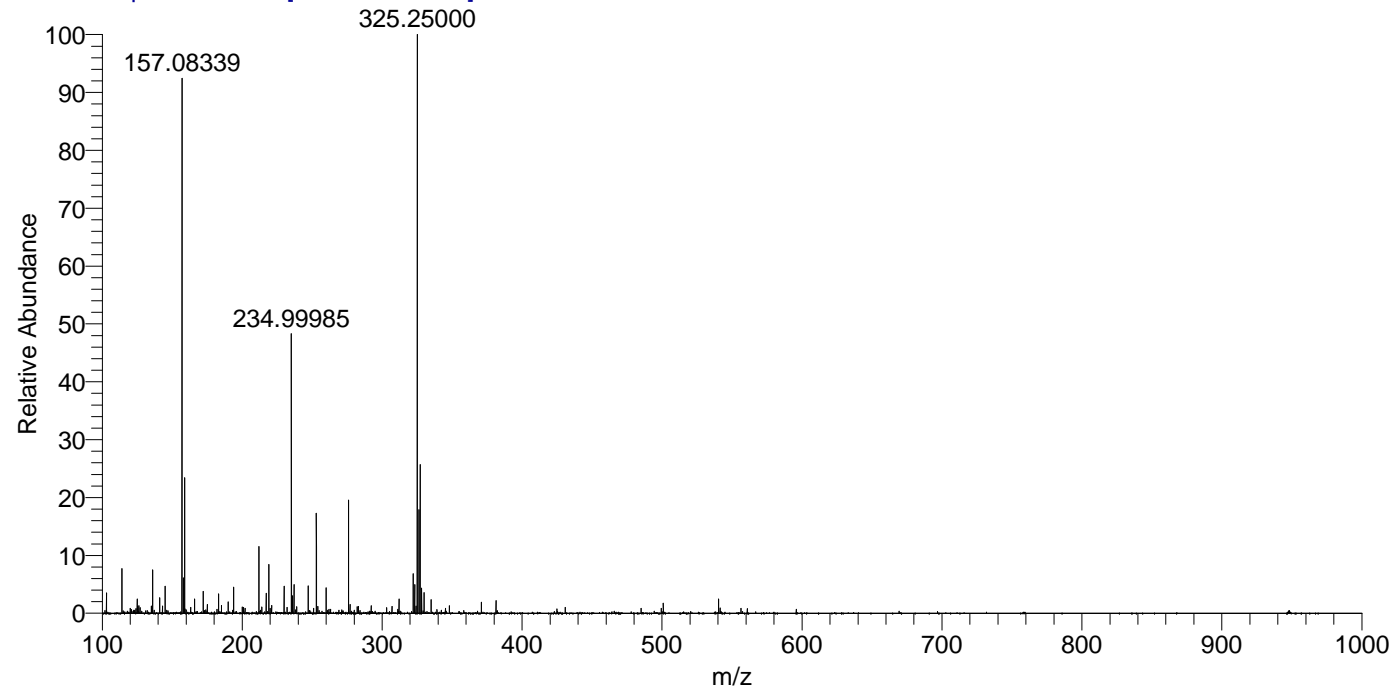
NL: 2.20E7  
 Base Peak m/z=  
 325.24943-325.25269 F:  
 FTMS + p ESI Full ms  
 [100.00-1500.00] MS  
 Aperta\_HDX

NL: 3.26E4  
 Base Peak m/z=  
 163.63176-163.63340 F:  
 FTMS + p ESI Full ms  
 [100.00-1500.00] MS  
 Aperta\_HDX

Aperta\_HDX#1570 RT: 9.39  
 T: FTMS + p ESI Full ms [100.00-1500.00]  
 m/z= 325.00000-326.00000

m/z	Intensity	Relative	Delta (ppm)	Composition
325.25000	20256118.0	100.00	-1.58	C <sub>17</sub> H <sub>21</sub> <sup>2</sup> H <sub>6</sub> O <sub>2</sub> N <sub>4</sub>
			3.18	C <sub>17</sub> H <sub>19</sub> <sup>2</sup> H <sub>7</sub> O <sub>2</sub> N <sub>4</sub>
			-6.34	C <sub>17</sub> H <sub>23</sub> <sup>2</sup> H <sub>5</sub> O <sub>2</sub> N <sub>4</sub>
			7.94	C <sub>17</sub> H <sub>17</sub> <sup>2</sup> H <sub>8</sub> O <sub>2</sub> N <sub>4</sub>

Aperta\_HDX #1570 RT: 9.39 AV: 1 NL: 2.00E7  
 T: FTMS + p ESI Full ms [100.00-1500.00]



Aperta\_HDX #1570 RT: 9.39 AV: 1 NL: 2.00E7  
 T: FTMS + p ESI Full ms [100.00-1500.00]

