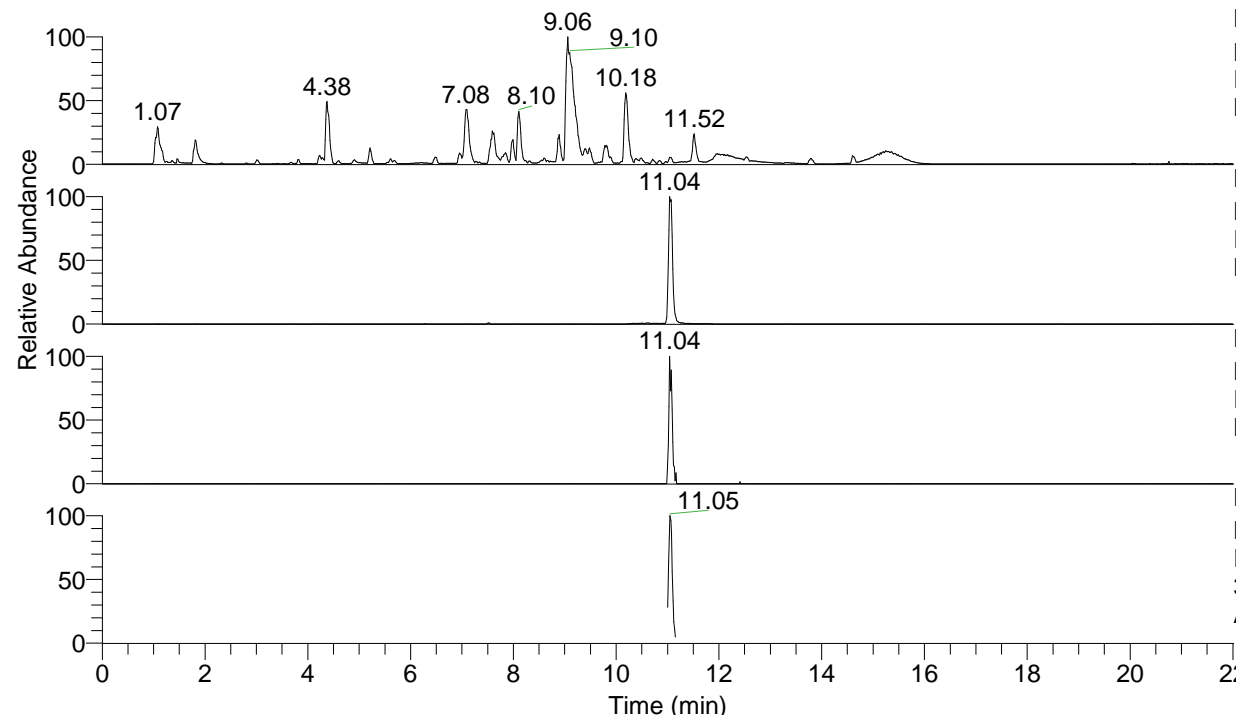


RT: 0.00 - 22.01



NL: 1.54E8  
 Base Peak m/z= 100.00000-1500.00000 F:  
 FTMS + p ESI Full ms [100.00-1500.00]  
 MS Aperta19

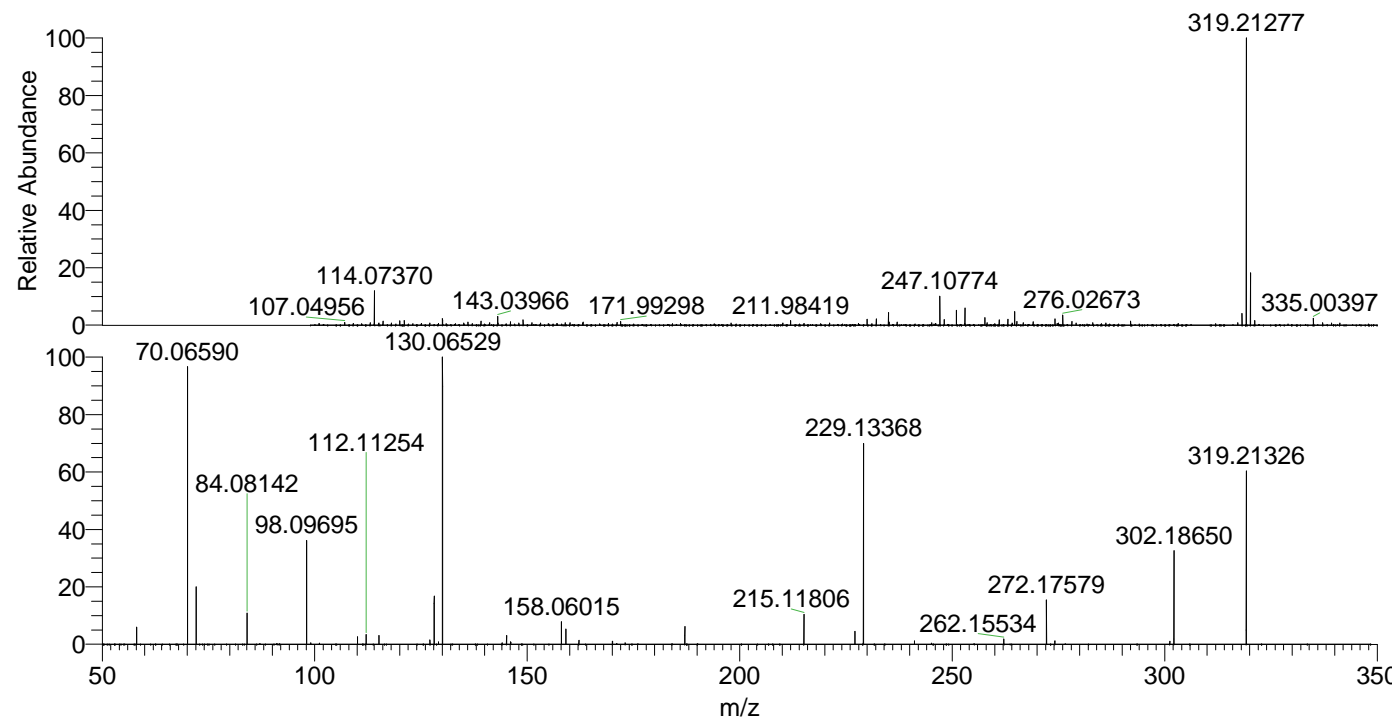
NL: 8.67E6  
 Base Peak m/z= 319.21180-319.21500 F:  
 FTMS + p ESI Full ms [100.00-1500.00]  
 MS Aperta19

NL: 7.37E4  
 Base Peak m/z= 160.10981-160.11141 F:  
 FTMS + p ESI Full ms [100.00-1500.00]  
 MS Aperta19

NL: 1.04E6  
 Base Peak m/z= 50.00000-1500.00000 F:  
 FTMS + p ESI d Full ms2  
 319.21@hcd35.00 [50.00-345.00] MS  
 Aperta19

Aperta19#4468-4514 RT: 11.01-11.12  
 F: FTMS + p ESI d Full ms2 319.21 ...  
 m/z= 50.00000-1000.00000

m/z	Intensity	Relative
58.06598	36545.7	5.93
70.06590	592064.2	96.09
70.06903	6891.0	1.12
72.08152	124878.3	20.27
84.08142	66328.1	10.77
98.09695	226348.6	36.74
110.09672	16115.4	2.62
112.11254	21139.5	3.43
115.12336	19654.7	3.19
127.12319	9484.2	1.54
128.10731	102953.4	16.71
129.13877	4905.6	0.80
130.06529	616126.5	100.00
144.08104	3393.5	0.55
145.13381	18834.6	3.06
146.06007	5083.5	0.83
146.16483	4531.8	0.74
158.06015	48163.7	7.82
159.09181	33149.2	5.38
162.16034	8645.2	1.40
170.06022	6659.9	1.08
187.08701	38085.0	6.18
215.11806	65658.6	10.66
227.11824	28884.2	4.69
229.13368	429766.3	69.75
241.13345	7303.5	1.19
262.15534	10954.7	1.78
272.17579	97487.0	15.82
274.15570	7357.0	1.19
301.20253	6652.3	1.08
302.18650	199936.7	32.45
319.21326	374070.7	60.71



NL: 8.67E6  
 Aperta19#4483 RT:  
 11.04 AV: 1 T: FTMS + p  
 ESI Full lock ms  
 [100.00-1500.00]

NL: 6.11E5  
 Aperta19#4466-4515 RT:  
 11.01-11.12 AV: 9 F:  
 FTMS + p ESI d Full ms2  
 319.21@hcd35.00  
 [50.00-345.00]