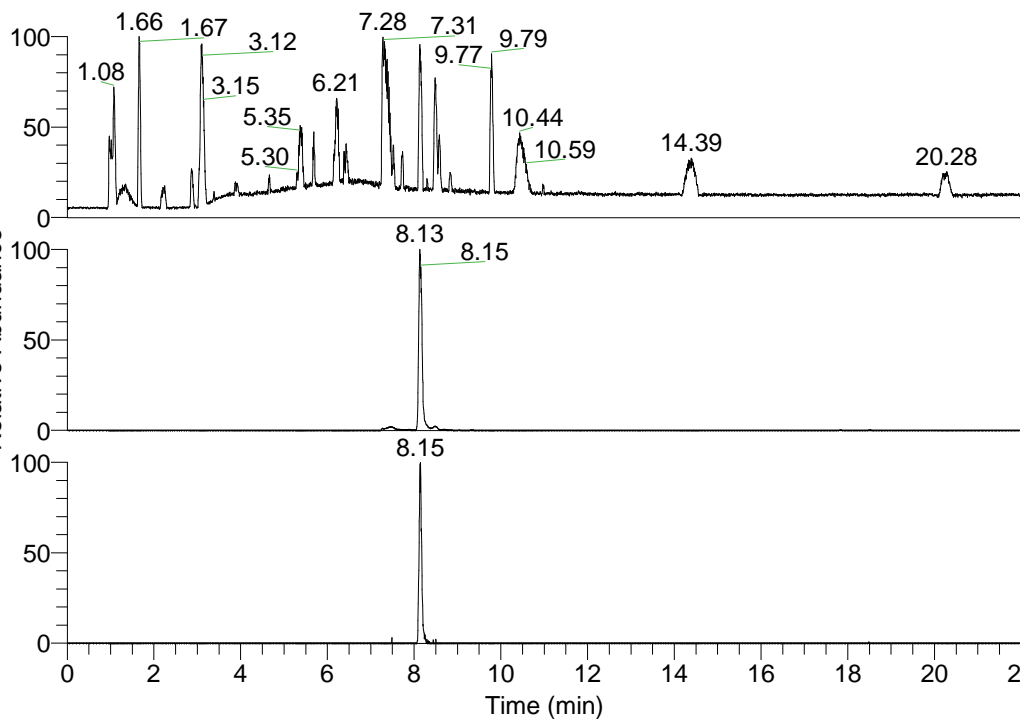


RT: 0.00 - 22.01



NL: 1.41E8
 Base Peak m/z=
 100.00000-1500.00000 F:
 FTMS + p ESI Full ms
 [100.00-1500.00] MS
 Aperta_HDX

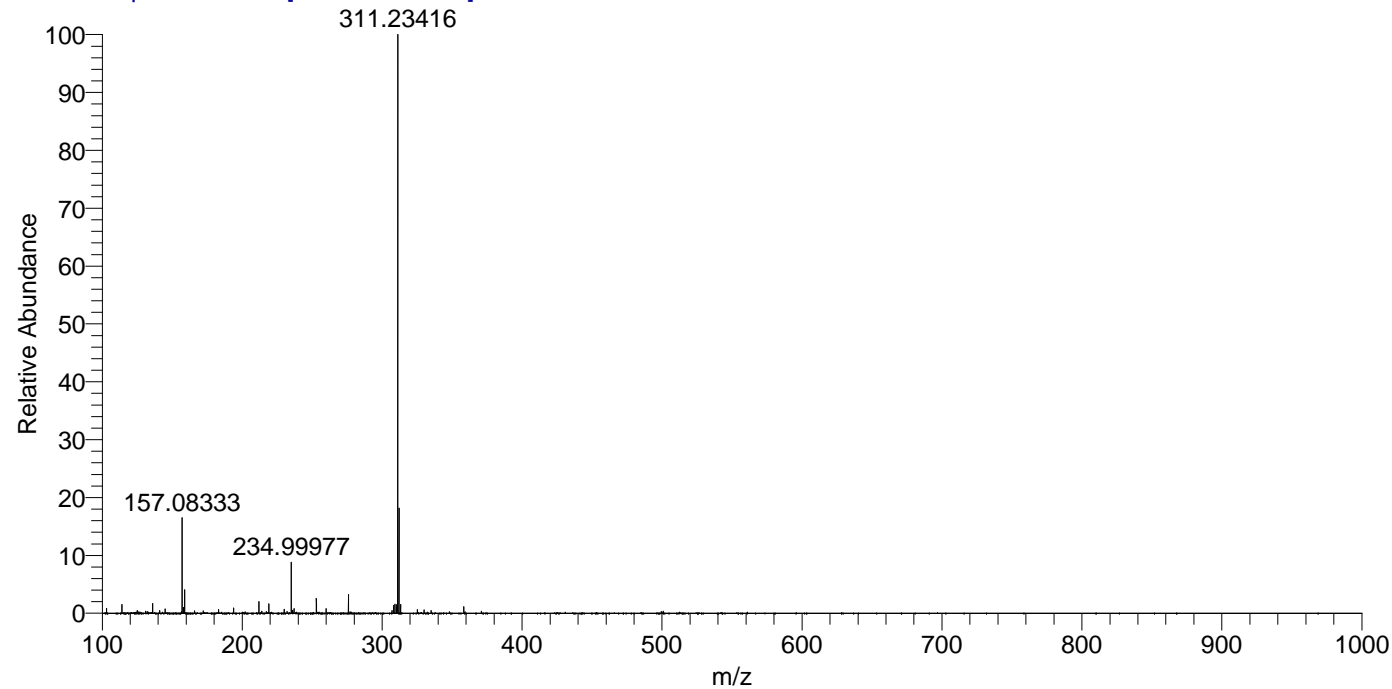
Aaperta_HDX#1353 RT: 8.13
 T: FTMS + p ESI Full ms [100.00-1500.00]
 m/z= 311.00000-312.00000

m/z	Intensity	Relative	Delta (ppm)	Composition
311.23416	134555472.0	100.00	-2.25	C ₁₆ H ₁₉ ² H ₆ O ₂ N ₄
			2.72	C ₁₆ H ₁₇ ² H ₇ O ₂ N ₄
			-7.23	C ₁₆ H ₂₁ ² H ₅ O ₂ N ₄
			7.69	C ₁₆ H ₁₅ ² H ₈ O ₂ N ₄

NL: 1.35E8
 Base Peak m/z=
 311.23385-311.23697 F:
 FTMS + p ESI Full ms
 [100.00-1500.00] MS
 Aperta_HDX

NL: 4.51E5
 Base Peak m/z=
 156.62398-156.62554 F:
 FTMS + p ESI Full ms
 [100.00-1500.00] MS
 Aperta_HDX

Aaperta_HDX #1353 RT: 8.13 AV: 1 NL: 1.29E8
 T: FTMS + p ESI Full ms [100.00-1500.00]



Aaperta_HDX #1353 RT: 8.13 AV: 1 NL: 1.29E8
 T: FTMS + p ESI Full ms [100.00-1500.00]

