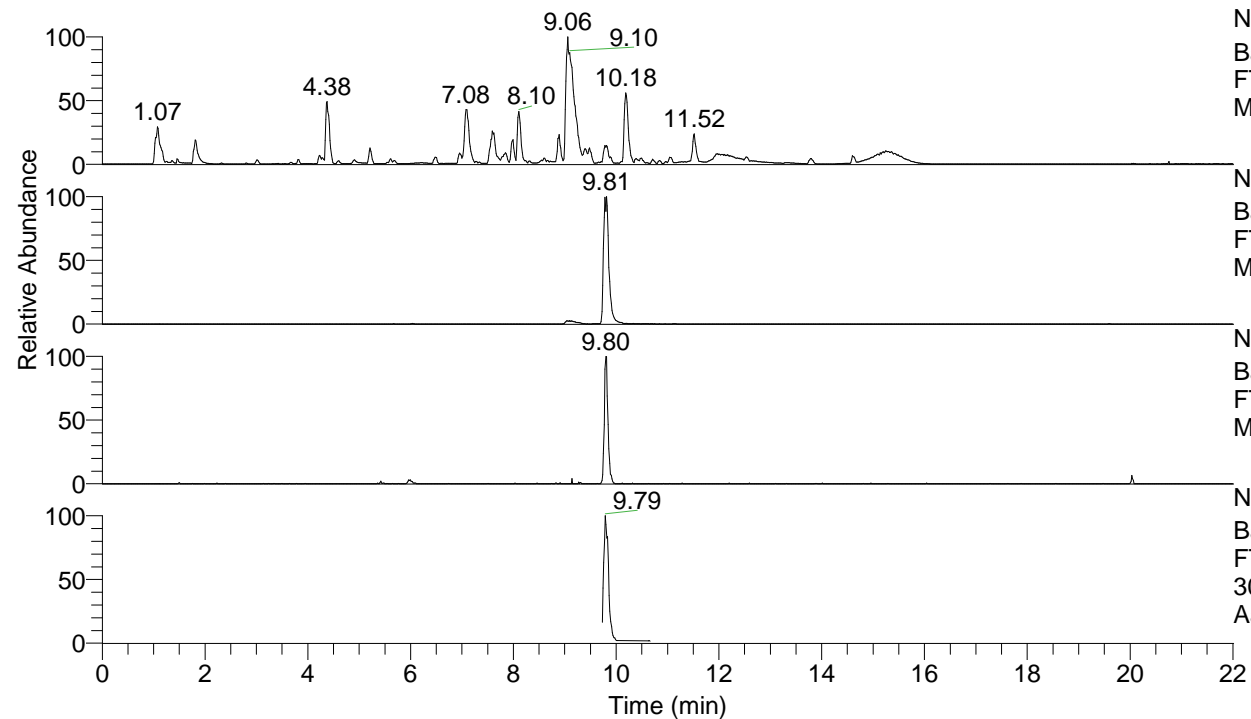


RT: 0.00 - 22.01



NL: 1.54E8
 Base Peak m/z= 100.00000-1500.00000 F:
 FTMS + p ESI Full ms [100.00-1500.00]
 MS Aperta19

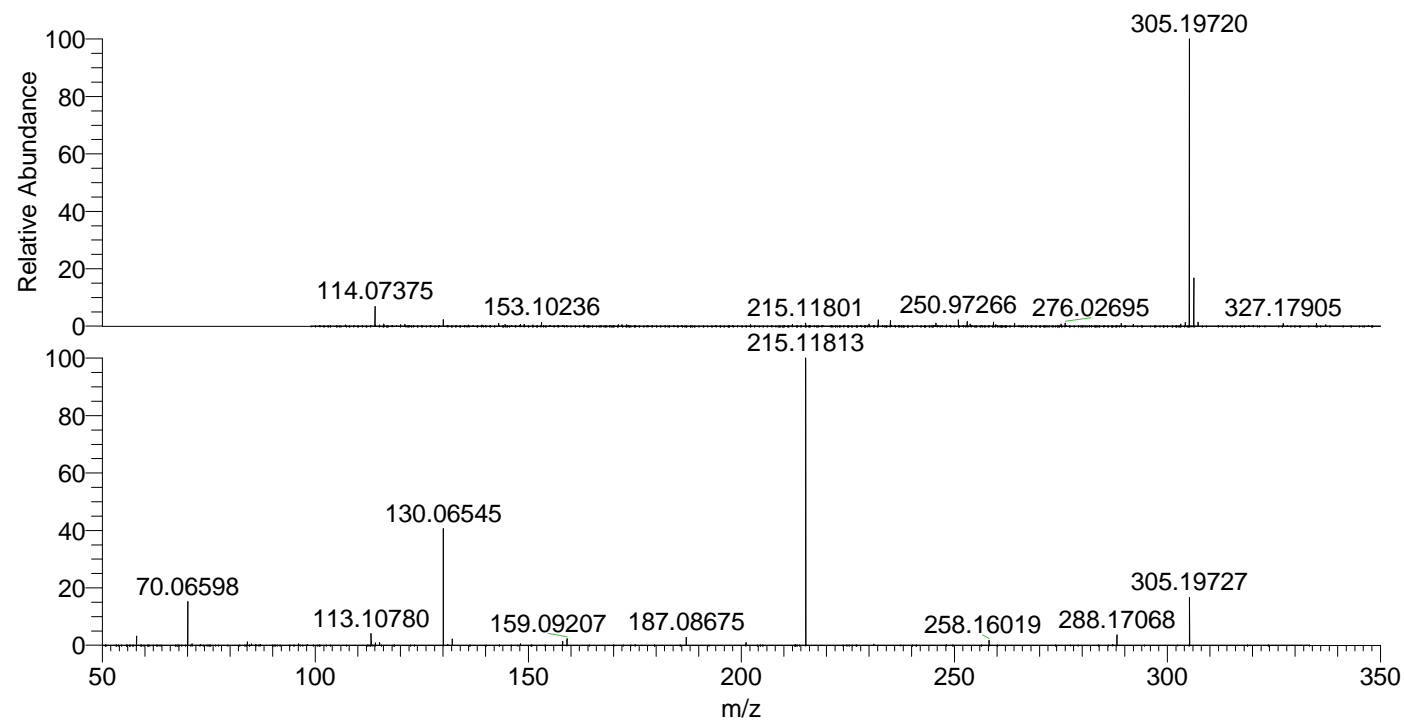
NL: 2.31E7
 Base Peak m/z= 305.19622-305.19928 F:
 FTMS + p ESI Full ms [100.00-1500.00]
 MS Aperta19

NL: 2.97E5
 Base Peak m/z= 153.10202-153.10356 F:
 FTMS + p ESI Full ms [100.00-1500.00]
 MS Aperta19

NL: 7.18E6
 Base Peak m/z= 50.00000-1500.00000 F:
 FTMS + p ESI d Full ms2
 305.16@hcd35.00 [50.00-330.00] MS
 Aperta19

Aaperta19#3952-4016 RT: 9.73-9.89 AV: 12
 F: FTMS + p ESI d Full ms2 305.16@h ...
 m/z= 50.00000-1000.00000

m/z	Intensity	Relative
58.06607	122867.7	3.13
70.06598	594373.5	15.13
71.07375	20314.5	0.52
84.08148	46571.7	1.19
85.07670	20788.6	0.53
113.10780	160590.7	4.09
114.09171	33050.7	0.84
115.12339	36500.0	0.93
130.06545	1585574.3	40.35
132.14984	87629.9	2.23
148.14452	19901.9	0.51
158.06045	56645.6	1.44
159.09207	91798.3	2.34
187.08675	109514.1	2.79
201.10251	35875.9	0.91
215.11813	3929169.3	100.00
258.16019	68877.2	1.75
288.17068	141200.5	3.59
305.19727	653952.6	16.64



NL: 2.27E7
 Aaperta19#3985 RT: 9.81
 AV: 1 T: FTMS + p ESI
 Full lock ms
 [100.00-1500.00]

NL: 3.90E6
 Aaperta19#3951-4016
 RT: 9.73-9.89 AV: 12 F:
 FTMS + p ESI d Full ms2
 305.16@hcd35.00
 [50.00-330.00]