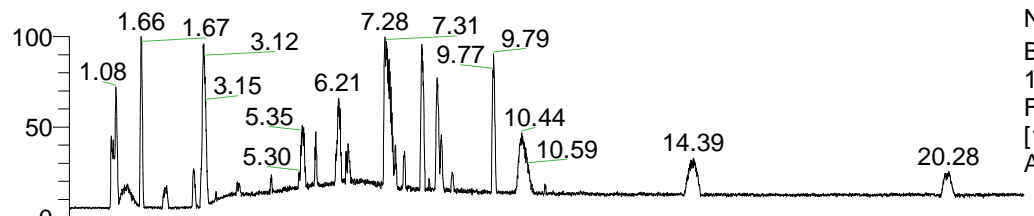


RT: 0.00 - 22.01



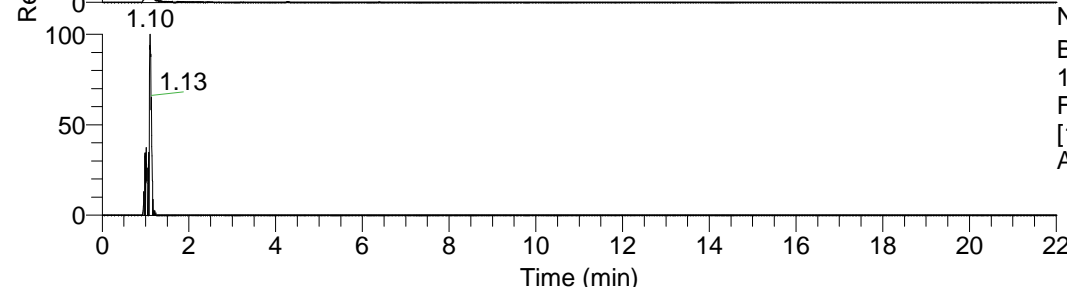
NL: 1.41E8  
 Base Peak m/z=  
 100.00000-1500.00000 F:  
 FTMS + p ESI Full ms  
 [100.00-1500.00] MS  
 Aperta\_HDX

Aperta\_HDX#169 RT: 1.10  
 T: FTMS + p ESI Full ms [100.00-1500.00]  
 m/z= 309.00000-310.00000

m/z	Intensity	Relative	Delta (ppm)	Composition
309.33469	12016472.0	100.00	-2.22	C <sub>15</sub> H <sub>29</sub> <sup>2</sup> H <sub>7</sub> ON <sub>5</sub>
			2.78	C <sub>15</sub> H <sub>27</sub> <sup>2</sup> H <sub>8</sub> ON <sub>5</sub>
			-7.23	C <sub>15</sub> H <sub>31</sub> <sup>2</sup> H <sub>6</sub> ON <sub>5</sub>
			7.79	C <sub>15</sub> H <sub>25</sub> <sup>2</sup> H <sub>9</sub> ON <sub>5</sub>



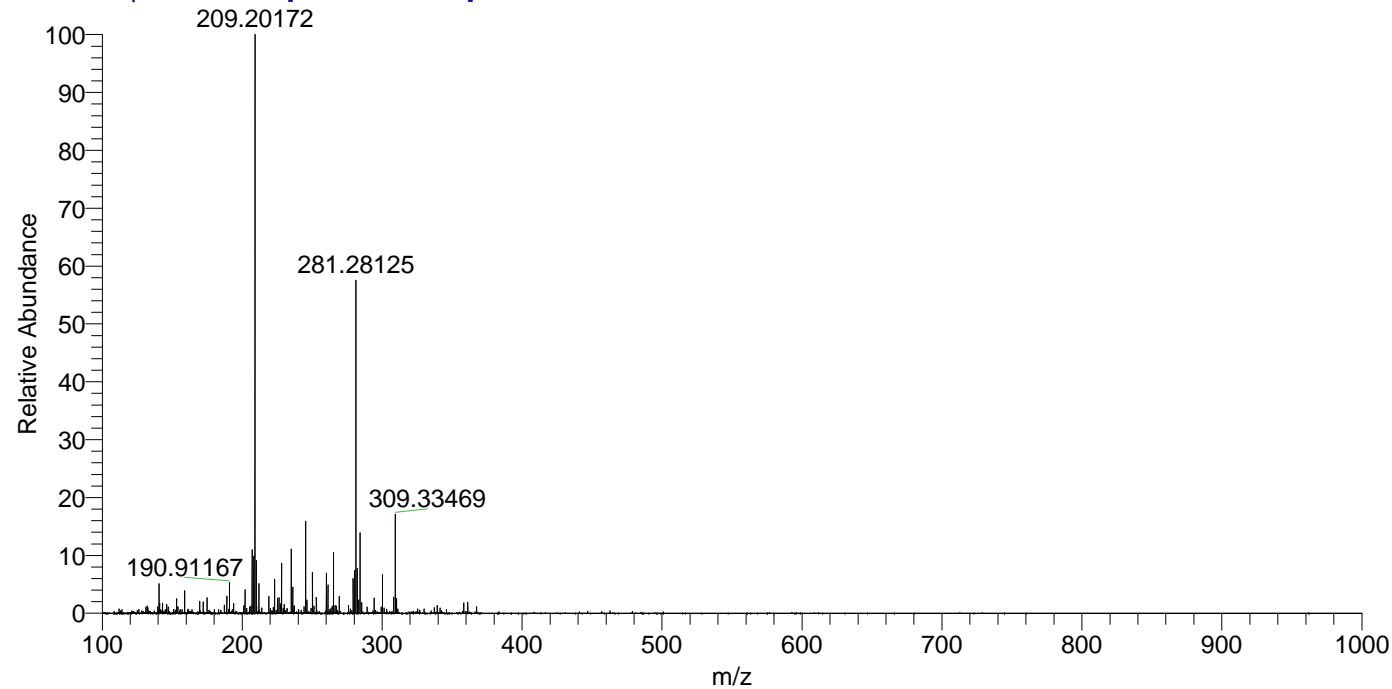
NL: 1.20E7  
 Base Peak m/z=  
 309.33437-309.33747 F:  
 FTMS + p ESI Full ms  
 [100.00-1500.00] MS  
 Aperta\_HDX



NL: 5.28E5  
 Base Peak m/z=  
 155.67423-155.67579 F:  
 FTMS + p ESI Full ms  
 [100.00-1500.00] MS  
 Aperta\_HDX

Aperta\_HDX #169 RT: 1.10 AV: 1 NL: 7.02E7

T: FTMS + p ESI Full ms [100.00-1500.00]



Aperta\_HDX #169 RT: 1.10 AV: 1 NL: 1.20E7

T: FTMS + p ESI Full ms [100.00-1500.00]

